

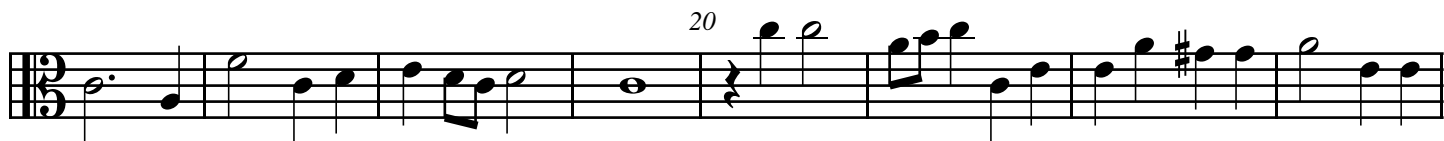
Rimes françoises et italiennes No. 5 part 1

Voici du gay printemps

Jan P. Sweelinck (1612)

Tenor

Tr T



Rimes françoises et italiennes No. 5 part 2

Le dieu Mars et l'Amour

Jan P. Sweelinck (1612)

Tenor

Tr T

The image displays a musical score for a Tenor part, labeled 'Tr T'. The score is written on eight staves, each containing a line of music. The music is in a common time signature (C) and a key signature of one sharp (F#). The score is divided into measures, with measure numbers 5, 10, 15, 20, 25, 30, 35, 40, 45, and 50 indicated above the staves. The notation includes various note values (quarter, eighth, and sixteenth notes), rests, and accidentals (sharps and flats). The music features a mix of melodic lines and rhythmic patterns, with some measures containing complex figures or ornaments. The overall style is characteristic of the early Baroque period, reflecting the influence of Italian lute tablature on Northern European keyboard and lute music.

55

First musical staff, measures 55-64. Features a melodic line with eighth-note patterns and a slur over measures 55-56.

60

Second musical staff, measures 60-69. Features a melodic line with eighth-note patterns and a slur over measures 60-61.

65

Third musical staff, measures 65-74. Features a melodic line with eighth-note patterns and a slur over measures 65-66.

70 75

Fourth musical staff, measures 70-79. Features a melodic line with eighth-note patterns and a slur over measures 70-71.

80

Fifth musical staff, measures 80-89. Features a melodic line with eighth-note patterns and a slur over measures 80-81. Ends with a double bar line.