

Trio from Mass in b minor BWV 232.18

LET VOICE SOLO PARTS ALWAYS PREDOMINATE

J. S. Bach [arr. P. Lang and R. Bartoli/ ed Lang] BWV 232.18

Aria for 2 Oboes d'amore, Bass and Bc "Et in spiritu"

arr. for Violin, Violin and Cello

♩. = 60

1 Violin
bwv 232.18 s3

2 Viola
bwv 232.18 s3

3 Violoncello
bwv 232.18 s3

6

Vln.

Vla.

Vc.

12

Vln.

Vla.

Vc.

p

f

Solo

mf

tutti

mf

p

mf

18

Vln.

Vla.

Vc.

tr

24

Vln. *tr*

Vla. *p* *f* *Solo*

Vc. *p*

Measures 24-29: Violin I (Vln.) has a trill (tr) in measure 24. Violin II (Vla.) starts with a piano (p) dynamic and a trill in measure 24, then moves to forte (f) and a solo section in measure 25. Viola (Vc.) starts with a piano (p) dynamic in measure 24.

30

Vln.

Vla. *tutti*

Vc. *p* *f* *Solo*

Measures 30-35: Violin I (Vln.) continues with a melodic line. Violin II (Vla.) has a tutti section starting in measure 30. Viola (Vc.) starts with a piano (p) dynamic in measure 30, then moves to forte (f) and a solo section in measure 31.

36

Vln.

Vla. *Solo* *f*

Vc. *tutti* *p*

Measures 36-41: Violin I (Vln.) continues with a melodic line. Violin II (Vla.) has a solo section starting in measure 36 with a forte (f) dynamic. Viola (Vc.) has a tutti section starting in measure 36 with a piano (p) dynamic.

42

Vln. *tr*

Vla.

Vc.

Measures 42-47: Violin I (Vln.) has a trill (tr) in measure 42. Violin II (Vla.) and Viola (Vc.) continue with their respective parts.

48

Vln. *tr* *mf*

Vla. *tutti* *mf*

Vc. *mf*

Measures 48-53: Violin I (Vln.) has a trill (tr) in measure 48 and a mezzo-forte (mf) dynamic. Violin II (Vla.) has a tutti section starting in measure 48 with a mezzo-forte (mf) dynamic. Viola (Vc.) starts with a mezzo-forte (mf) dynamic in measure 48.

54

Vln. Vla. Vc.

tr

Detailed description: This system contains measures 54 through 59. The music is in 3/4 time with a key signature of two sharps (F# and C#). The Violin (Vln.) part features a melodic line with eighth and sixteenth notes. The Viola (Vla.) part has a similar rhythmic pattern, including a trill (tr) in measure 57. The Violoncello (Vc.) part provides a bass line with eighth notes and rests.

60

Vln. Vla. Vc.

tr p Solo p p

Detailed description: This system contains measures 60 through 65. Measure 60 begins with a trill (tr) in the Viola part. Dynamic markings include piano (p) for the Violin and Viola, and forte (f) for the Viola in measure 61. A 'Solo' instruction is placed above the Viola staff in measure 61. The Violoncello part continues with a steady eighth-note bass line.

66

Vln. Vla. Vc.

Detailed description: This system contains measures 66 through 71. The Violin part has a melodic line with some long notes. The Viola part features a sustained chord in measure 67. The Violoncello part continues with eighth-note patterns.

72

Vln. Vla. Vc.

tutti p

Detailed description: This system contains measures 72 through 77. A 'tutti' instruction is placed above the Viola staff in measure 74, with a piano (p) dynamic marking below it. The Violin part has a melodic line, and the Viola part has a rhythmic accompaniment.

78

Vln. Vla. Vc.

tr Solo f

Detailed description: This system contains measures 78 through 83. Measure 78 begins with a trill (tr) in the Violin part. A 'Solo' instruction is placed above the Viola staff in measure 79, with a forte (f) dynamic marking below it. The Violoncello part continues with eighth-note patterns.

84

Vln. Vla. Vc.

This system contains measures 84 through 89. The Vln. part begins with a whole rest in measure 84, followed by a melodic line. The Vla. part has a melodic line with some rests. The Vc. part has a bass line with some rests. The key signature is two sharps (F# and C#).

90

Vln. Vla. Vc.

p *f*

This system contains measures 90 through 95. The Vln. part has a melodic line with some rests. The Vla. part has a melodic line with dynamics *p* and *f*. The Vc. part has a bass line. The key signature is two sharps.

96

Vln. Vla. Vc.

mf *tutti* *mf* *mf*

This system contains measures 96 through 101. The Vln. part has a melodic line with dynamics *mf* and *tutti*. The Vla. part has a melodic line with dynamics *mf*. The Vc. part has a bass line with dynamics *mf*. The key signature is two sharps.

102

Vln. Vla. Vc.

tr *p* *Solo* *f* *p*

This system contains measures 102 through 107. The Vln. part has a melodic line with trills (*tr*). The Vla. part has a melodic line with dynamics *p*, *Solo*, and *f*. The Vc. part has a bass line with dynamics *p*. The key signature is two sharps.

108

Vln. Vla. Vc.

This system contains measures 108 through 113. The Vln. part has a melodic line. The Vla. part has a melodic line. The Vc. part has a bass line. The key signature is two sharps.

114

Vln. Vla. Vc.

This system contains measures 114 through 119. It features three staves: Violin (Vln.), Viola (Vla.), and Violoncello (Vc.). The key signature is two sharps (F# and C#). The music consists of continuous eighth-note and quarter-note patterns across all three parts.

120

Vln. Vla. Vc.

This system contains measures 120 through 125. The Violin part has a melodic line with some rests, while the Viola and Cello parts continue with rhythmic accompaniment. The key signature remains two sharps.

126

Vln. Vla. Vc.

This system contains measures 126 through 131. The Violin part has several measures of rest, while the Viola and Cello parts continue their rhythmic accompaniment. The key signature remains two sharps.

132

Vln. Vc. *f* *tutti* *p*

This system contains measures 132 through 137. It includes dynamic markings: *f* (forte) and *tutti* for the Violin and Viola parts, and *p* (piano) for the Cello part. The key signature remains two sharps.

138

Vln. Vc. *tr* *rit.*

This system contains measures 138 through 143. It includes trill (*tr*) and ritardando (*rit.*) markings. The key signature remains two sharps.

1 Violin bwv 232.18 s3

Trio from Mass in b minor BWV 232.18

LET VOICE SOLO PARTS ALWAYS PREDOMINATE

J. S. Bach [arr. P. Lang and R. Bartoli/ ed Lang] BWV 232.18

Aria for 2 Oboes d'amore, Bass and Bc "Et in spiritu"

arr. for Violin, Violin and Cello

♩. = 60

f

tr *tr* *p*

3 *mf* *3* *p*

mf

tr

mf

p

p

70

77

85

92

mf

102

p

111

118

124

132

f *p*

138

tr *tr* *rit.*

Trio from Mass in b minor BWV 232.18

LET VOICE SOLO PARTS ALWAYS PREDOMINATE

J. S. Bach [arr. P. Lang and R. Bartoli/ ed Lang] BWV 232.18

Aria for 2 Oboes d'amore, Bass and Bc "Et in spiritu"

arr. for Violin, Violin and Cello

Bc $\text{♩} = 60$

8 *f* Solo 3

17 tutti *f* tr

24 *mf* tr Solo

31 tutti *p* *f*

38 *p* Solo

44 *f* tutti *mf*

51

58 tr Solo tr~

64 *p* *f* *p*

71 tutti *p*

77

Solo

83

f

89

95

tutti

p

f

101

tr~

mf

tr~

Solo

106

f

111

115

120

126

132

tutti

f

p

139

rit.

3 Violoncello bwv 232.18 s3

Trio from Mass in b minor BWV 232.18

LET VOICE SOLO PARTS ALWAYS PREDOMINATE

J. S. Bach [arr. P. Lang and R. Bartoli/ ed Lang] BWV 232.18

Aria for 2 Oboes d'amore, Bass and Bc "Et in spiritu"

arr. for Violin, Violin and Cello

$\text{♩} = 60$
lead

f

9

p *mf*

17

25

p Solo *f*

32

tutti *p*

40

48

mf

56

p

64

70

77



84



91



98



106



113



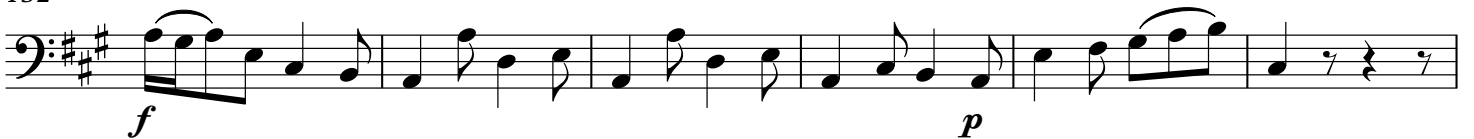
120



125



132



138

