

Tomaso Albinoni (1671-1750)
Concerto for Two Oboes in D Major (Opus 7, No. 8)
with Strings and Basso continuo

Oboe I and II arrangement

Edited by Don Werdick
www.oboemn.com/ensemble
www.oboemn.com



2018 Chamber Ensemble of Minnesota, Inc.
www.oboemn.com/ensemble
www.oboemn.com

Concerto for Two Oboes in D Major, (Op 7, No. 8)

for Two Oboes, Strings and Basso continuo

Tomaso Albinoni (1671-1750)

Edited: Don Werdick (1947 -)

Allegro ♩ = 100

Oboe I

Oboe II

7 3

14

2

20

25

3

32

37

43

48

53

58

Largo tacet **Allegro** ♩ = ca. 80

39 5

104

108

3

114

2

120

124

128

132

①

Measure 117 Oboe II part trill fingering A# to B: this should be accomplished by playing A# (Bb) with the regular Ab key down and then lifting the middle finger of your left hand.

Oboe I

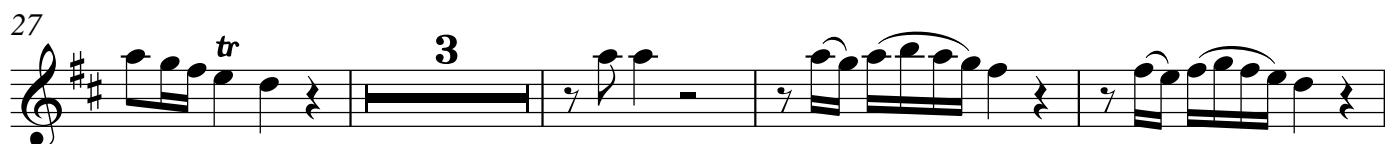
Concerto for Two Oboes in D Major, (Op 7, No. 8)

for Two Oboes, Strings and Basso continuo

Tomaso Albinoni (1671-1750)

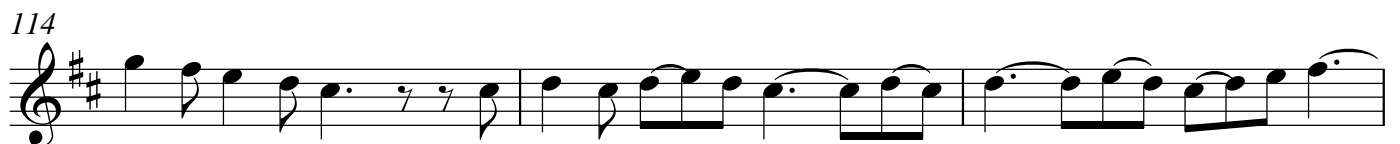
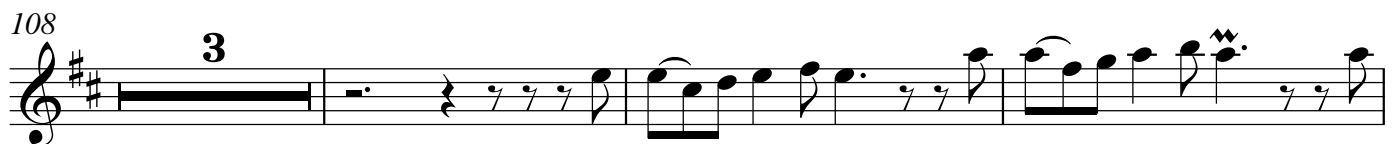
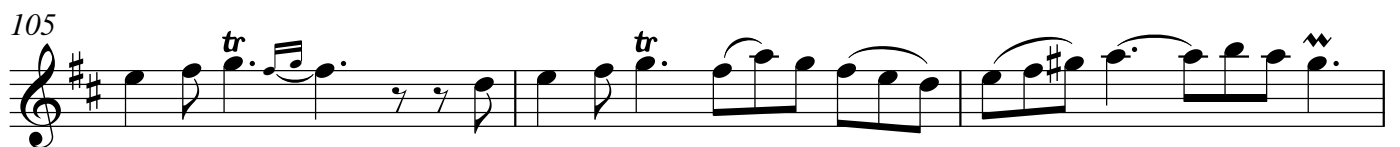
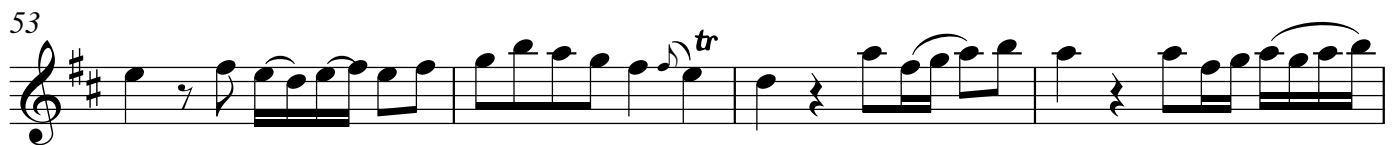
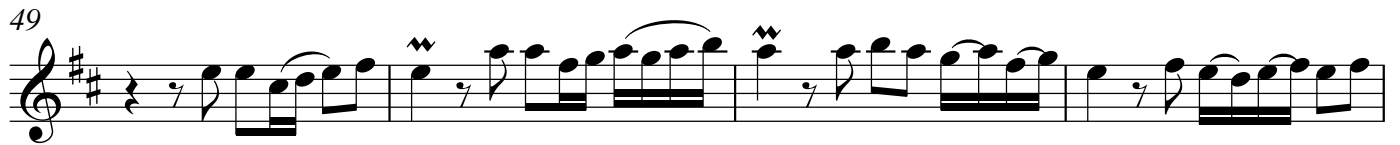
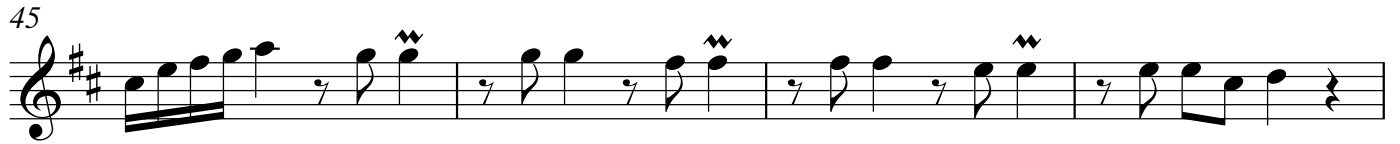
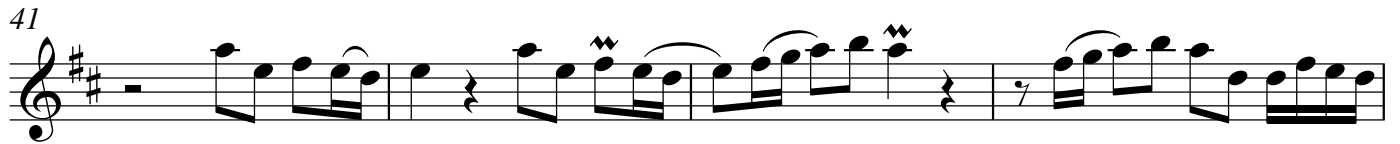
Edited: Don Werdick (1947 -)

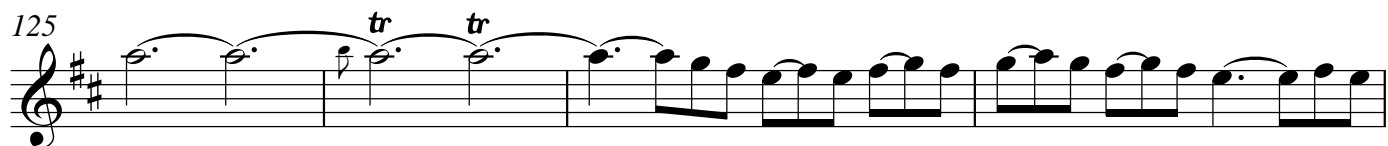
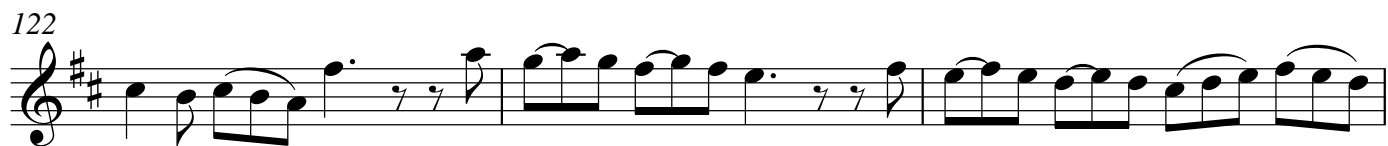
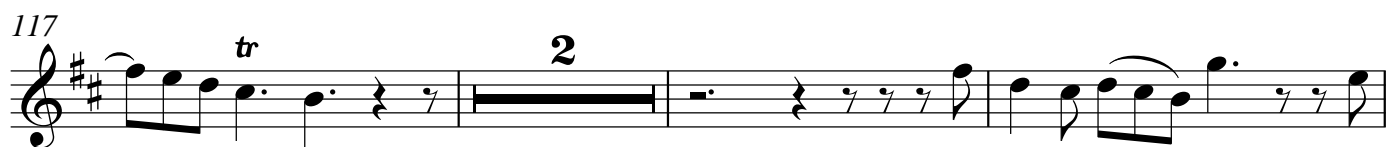
Allegro ♩ = 100



Oboe I

2





Oboe II

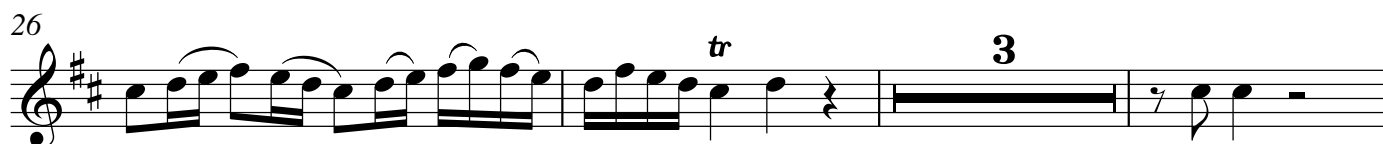
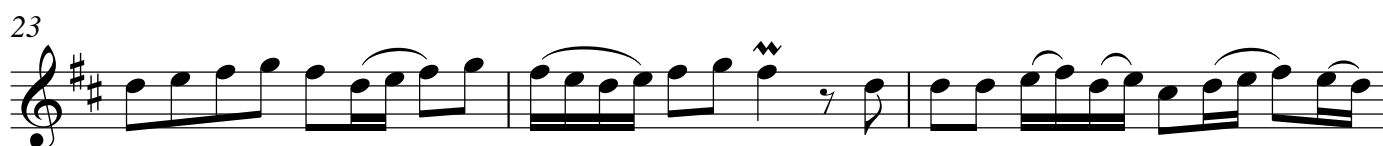
Concerto for Two Oboes in D Major, (Op 7, No. 8)

for Two Oboes, Strings and Basso continuo

Tomaso Albinoni (1671-1750)

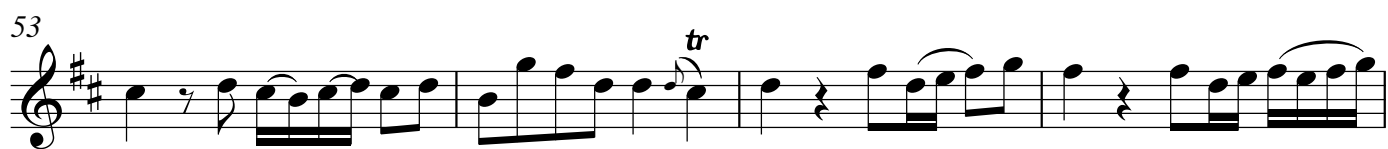
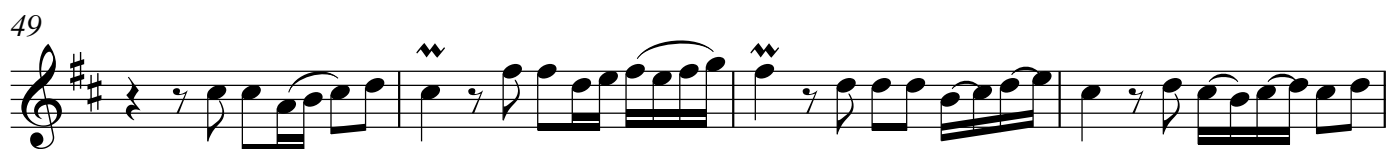
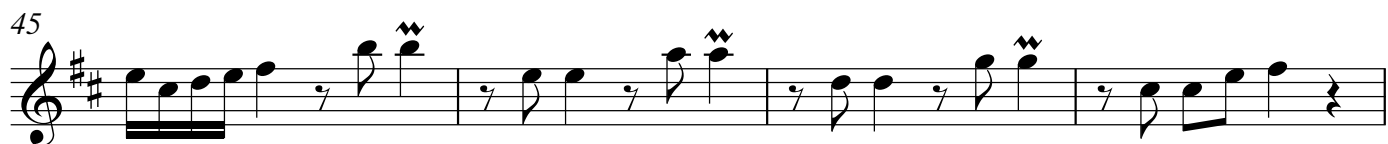
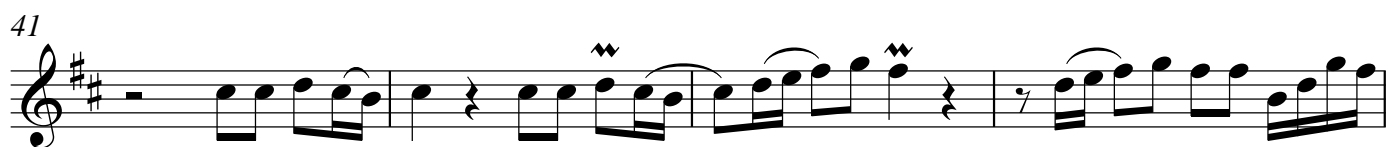
Edited: Don Werdick (1947 -)

Allegro ♩ = 100



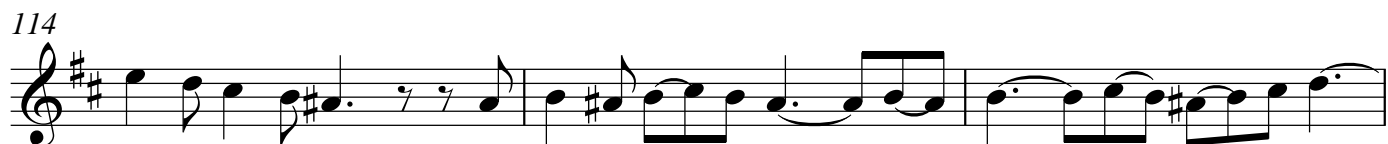
Oboe II

2



Largo

TACET 39



117 *tr* ① **3**

122

125

128 *tr*

132 **2** *tr* , *rit.*

①

Measure 117 Oboe II part trill fingering A# to B: this should be accomplished by playing A# (Bb) with the regular Ab key down and then lifting the middle finger of your left hand.