

SUITE in C MAJOR

(from: Tibiade, Suite No.8 - 1717)

for Trumpet and Organ

Score (09':55'')

François Chauvon (fl.1770 - 1740)

Arr. Michel Rondeau

1. Prélude - Lentement $\text{♩} = 60$

Trumpet in C

Organ

Measures 1-4: Trumpet in C and Organ. The Trumpet part features trills (tr) and triplets (3). The Organ part provides harmonic accompaniment with chords and moving lines in both hands.

C Tpt.

Org.

Measures 5-7: C Trumpet and Organ. The C Trumpet part continues with trills and triplets. The Organ part features a triplet in the right hand and a steady bass line.

C Tpt.

Org.

Measures 8-10: C Trumpet and Organ. The C Trumpet part includes a first ending (1.) and a trill. The Organ part has triplets in both hands.

C Tpt.

Org.

Measures 11-13: C Trumpet and Organ. The C Trumpet part features a second ending (2.) and trills. The Organ part has triplets in both hands.

C Tpt. 

Org. 

C Tpt. 

Org. 

C Tpt. 

Org. 

2. Allemande - Légèrement

C Tpt. 

Org. 

28

C Tpt.

Org.

31

C Tpt.

Org.

34

1. 2. 3. Courante - Moderato

C Tpt.

Org.

39

C Tpt.

Org.

46

C Tpt.

Org.

53

C Tpt.

Org.

59

C Tpt.

Org.

65

C Tpt.

Org.

72 *tr*

C Tpt.

Org.

79 **4. Gigue - Légèrement**

C Tpt.

Org.

86

C Tpt.

Org.

92

C Tpt.

Org.

C Tpt. ⁹⁸

Org. ⁹⁸

C Tpt. ¹⁰³

Org. ¹⁰³

SUITE in C MAJOR

(from: *Tibiade, Suite No.8 - 1717*)

for Trumpet and Organ

François Chauvon (fl.1770 - 1740)

Arr. Michel Rondeau

Trumpet in B \flat

1. Prélude - Lentement $\text{♩} = 60$

Measures 1-4 of the Prélude. The key signature is one sharp (F#) and the time signature is 4/4. The music begins with a whole rest, followed by a quarter note G4, a quarter note A4, and a quarter note B4. Measure 2 contains a triplet of eighth notes (G4, A4, B4), a quarter note C5, and a quarter note B4. Measure 3 contains a triplet of eighth notes (A4, B4, C5), a quarter note B4, and a quarter note A4. Measure 4 contains a triplet of eighth notes (G4, A4, B4), a quarter note G4, and a quarter note F#4. Trills are indicated above the first and last notes of measures 2, 3, and 4.

Measures 5-8 of the Prélude. Measure 5 starts with a half note G4, followed by a quarter rest, a quarter note A4, and a quarter note B4. Measure 6 contains a quarter note C5, a quarter note B4, and a quarter note A4. Measure 7 contains a triplet of eighth notes (G4, A4, B4), a quarter note C5, and a quarter note B4. Measure 8 contains a triplet of eighth notes (A4, B4, C5), a quarter note B4, and a quarter note A4.

Measures 9-12 of the Prélude. Measure 9 contains a quarter note G4, a quarter note A4, and a quarter note B4. Measure 10 contains a quarter note C5, a quarter note B4, and a quarter note A4. Measure 11 contains a first ending bracket over a quarter note G4, a quarter note A4, and a quarter note B4. Measure 12 contains a second ending bracket over a quarter note C5, a quarter note B4, and a quarter note A4. Trills are indicated above the first and last notes of measures 9, 10, 11, and 12.

Measures 13-17 of the Prélude. Measure 13 contains a quarter note G4, a quarter note A4, and a quarter note B4. Measure 14 contains a quarter note C5, a quarter note B4, and a quarter note A4. Measure 15 contains a quarter rest, a quarter note G4, and a quarter note A4. Measure 16 contains a quarter note B4, a quarter note C5, and a quarter note B4. Measure 17 contains a quarter note A4, a quarter note G4, and a quarter note F#4.

Measures 18-21 of the Prélude. Measure 18 contains a quarter note G4, a quarter note A4, and a quarter note B4. Measure 19 contains a quarter note C5, a quarter note B4, and a quarter note A4. Measure 20 contains a first ending bracket over a quarter note G4, a quarter note A4, and a quarter note B4. Measure 21 contains a second ending bracket over a quarter note C5, a quarter note B4, and a quarter note A4. Trills are indicated above the first and last notes of measures 20 and 21.

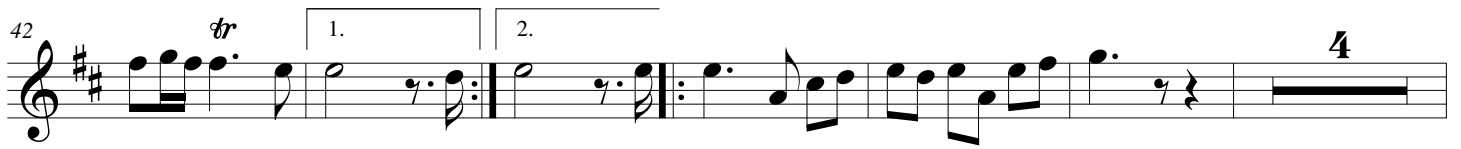
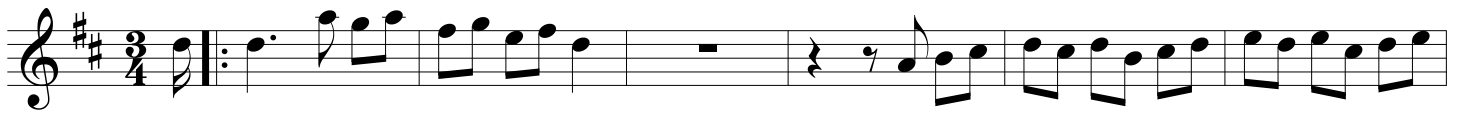
Measures 22-26 of the Allemande. The key signature is one sharp (F#) and the time signature is 4/4. Measure 22 contains a quarter rest, followed by a quarter note G4, a quarter note A4, and a quarter note B4. Measure 23 contains a quarter note C5, a quarter note B4, and a quarter note A4. Measure 24 contains a quarter note G4, a quarter note A4, and a quarter note B4. Measure 25 contains a quarter note C5, a quarter note B4, and a quarter note A4. Measure 26 contains a first ending bracket over a quarter note G4, a quarter note A4, and a quarter note B4.

Measures 27-30 of the Allemande. Measure 27 contains a second ending bracket over a quarter note G4, a quarter note A4, and a quarter note B4. Measure 28 contains a quarter note C5, a quarter note B4, and a quarter note A4. Measure 29 contains a quarter note G4, a quarter note A4, and a quarter note B4. Measure 30 contains a quarter note C5, a quarter note B4, and a quarter note A4.

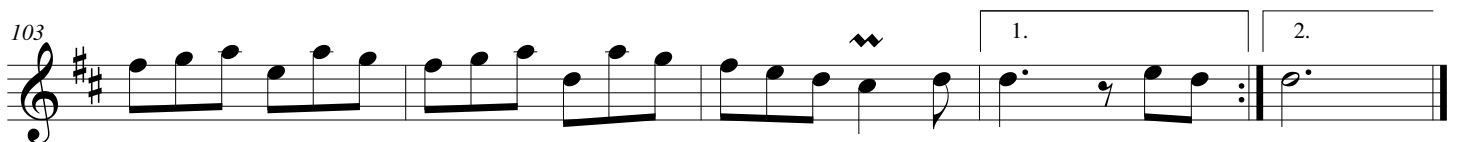
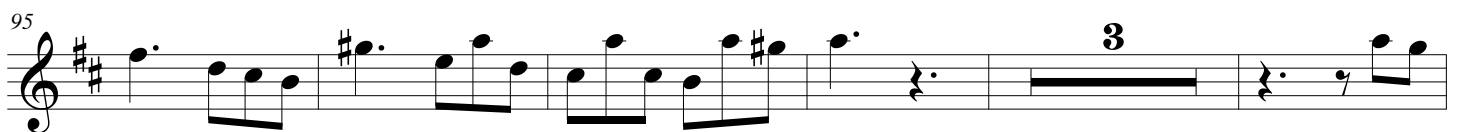
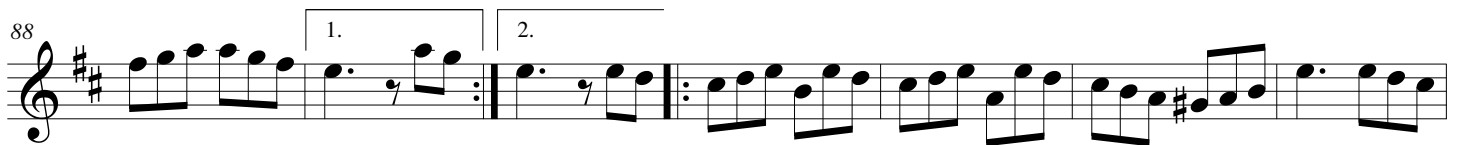
Measures 31-34 of the Allemande. Measure 31 contains a quarter rest, followed by a quarter note G4, a quarter note A4, and a quarter note B4. Measure 32 contains a quarter note C5, a quarter note B4, and a quarter note A4. Measure 33 contains a first ending bracket over a quarter note G4, a quarter note A4, and a quarter note B4. Measure 34 contains a second ending bracket over a quarter note C5, a quarter note B4, and a quarter note A4.

SUITE in C MAJOR - Chauvon - B \flat Trumpet

3. Courante - Moderato



4. Gigue - Légèrement



SUITE in C MAJOR

(from: *Tibide, Suite No.8 - 1717*)
for Trumpet and Organ

Trumpet in C

François Chauvon (fl.1770 - 1740)
Arr. Michel Rondeau

1. Prélude - Lentement $\text{♩} = 60$

2. Allemande - Légèrement

SUITE in C MAJOR - Chauvon - C Trumpet

3. Courante - Moderato

Musical staff for Courante, measures 1-41. The key signature is C major and the time signature is 3/4. The piece begins with a repeat sign and a first ending bracket.

Musical staff for Courante, measures 42-51. Measure 42 features a trill (*tr*). The staff includes first and second endings and a four-measure rest.

Musical staff for Courante, measures 52-58. Measure 52 features a trill (*tr*). The staff continues the melodic line.

Musical staff for Courante, measures 59-65. The staff contains eighth-note patterns and rests.

Musical staff for Courante, measures 66-72. Measure 72 features a trill (*tr*). The staff includes first and second endings.

Musical staff for Courante, measures 73-80. Measure 79 features a trill (*tr*). The staff includes first and second endings and ends with a double bar line and a 6/8 time signature change.

81 4. Gigue - Légèrement

Musical staff for Gigue, measures 81-87. The key signature changes to C major and the time signature to 6/8. The piece begins with a repeat sign.

Musical staff for Gigue, measures 88-94. The staff includes first and second endings and a sharp sign (#).

Musical staff for Gigue, measures 95-102. Measure 95 features a sharp sign (#). The staff includes a three-measure rest.

Musical staff for Gigue, measures 103-109. Measure 103 features a wavy line (*w*). The staff includes first and second endings.

SUITE in C MAJOR

(from: *Tibiade, Suite No.8 - 1717*)
for Trumpet and Organ

Trumpet in D

François Chauvon (fl.1770 - 1740)
Arr. Michel Rondeau

1. Prélude - Lentement $\text{♩} = 60$

Musical score for the first movement, Prélude, in C major, 4/4 time, tempo 'Lentement'. The score consists of six staves of music. It begins with a treble clef, a key signature of one flat (B-flat), and a 4/4 time signature. The music features a variety of rhythmic patterns, including eighth and sixteenth notes, and rests. There are several trills (tr) and triplets (3) throughout the piece. The first staff starts with a quarter rest, followed by a quarter note G4, a quarter note F4, and a quarter note E4. The second staff begins with a quarter note D4, followed by a quarter note C4, and a quarter note B3. The third staff starts with a quarter note A3, followed by a quarter note G3, and a quarter note F3. The fourth staff begins with a quarter note E3, followed by a quarter note D3, and a quarter note C3. The fifth staff starts with a quarter note B2, followed by a quarter note A2, and a quarter note G2. The sixth staff begins with a quarter note F2, followed by a quarter note E2, and a quarter note D2. The piece concludes with a final quarter note D2.

2. Allemande - Légèrement

Musical score for the second movement, Allemande, in C major, 4/4 time, tempo 'Légèrement'. The score consists of three staves of music. It begins with a treble clef, a key signature of one flat (B-flat), and a 4/4 time signature. The music features a variety of rhythmic patterns, including eighth and sixteenth notes, and rests. There are several trills (tr) and first/second endings (1., 2.) throughout the piece. The first staff starts with a quarter rest, followed by a quarter note G4, a quarter note F4, and a quarter note E4. The second staff begins with a quarter note D4, followed by a quarter note C4, and a quarter note B3. The third staff starts with a quarter note A3, followed by a quarter note G3, and a quarter note F3. The fourth staff begins with a quarter note E3, followed by a quarter note D3, and a quarter note C3. The fifth staff starts with a quarter note B2, followed by a quarter note A2, and a quarter note G2. The sixth staff begins with a quarter note F2, followed by a quarter note E2, and a quarter note D2. The piece concludes with a final quarter note D2.

SUITE in C MAJOR - Chauvon - D Trumpet

3. Courante - Moderato

4. Gigue - Légèrement

SUITE in C MAJOR

(from: Tibiade, Suite No.8 - 1717)
for Trumpet and Organ

François Chauvon (fl.1770 - 1740)

Arr. Michel Rondeau

Organ

Trumpet in C

1. Prélude - Lentement ♩ = 60

C Tpt.

Org.

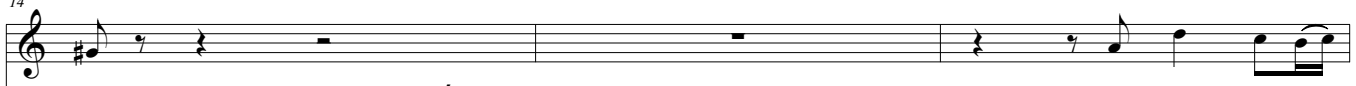
C Tpt.

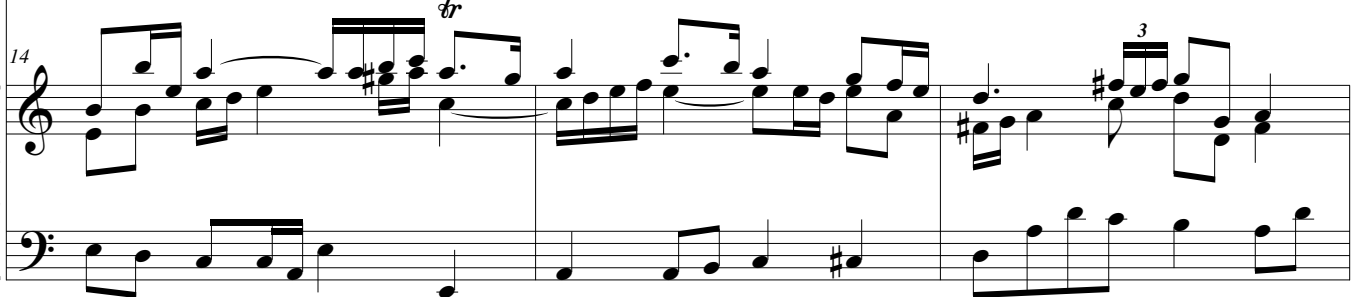
Org.

C Tpt.

Org.

SUITE in C MAJOR - Chauvon - Organ

C Tpt. 

Org. 

C Tpt. 

Org. 

C Tpt. 

Org. 

2. Allemande - Légèrement

C Tpt. 

Org. 

C Tpt. ²⁸

Org.

Detailed description: This system covers measures 28 to 30. The C Tpt. part begins with a repeat sign and a first ending bracket. The organ part features a complex texture with sixteenth-note runs in the right hand and eighth-note patterns in the left hand.

C Tpt. ³¹

Org.

Detailed description: This system covers measures 31 to 33. The C Tpt. part has a first ending bracket. The organ part continues with intricate sixteenth-note passages in both hands.

C Tpt. ³⁴

Org.

3. Courante - Moderato

Detailed description: This system covers measures 34 to 38. It marks the beginning of the third movement, '3. Courante - Moderato', in 3/4 time. The C Tpt. part has two first ending brackets. The organ part features a rhythmic accompaniment with eighth notes in the left hand and chords in the right hand.

C Tpt. ³⁹

Org.

Detailed description: This system covers measures 39 to 43. The C Tpt. part includes a trill (tr) and two first ending brackets. The organ part continues with its characteristic rhythmic accompaniment.

SUITE in C MAJOR - Chauvon - Organ

C Tpt. 
Org. 

C Tpt. 
Org. 

C Tpt. 
Org. 

C Tpt. 
Org. 

72

C Tpt.

Org.

79

C Tpt.

Org.

4. Gigue - Légèrement

86

C Tpt.

Org.

92

C Tpt.

Org.

SUITE in C MAJOR - Chauvon - Organ

C Tpt.

98

Org.

C Tpt.

103

1.

2.

Org.