

Sung by Mr. JOHN McCORMACK

At All His Engagements



# Dear Old Pal of Mine

Words by

HAROLD ROBÉ

Music by

GITZ RICE, LIEUT.

First Canadian Contingent

Price 40 cents, net—No Discount

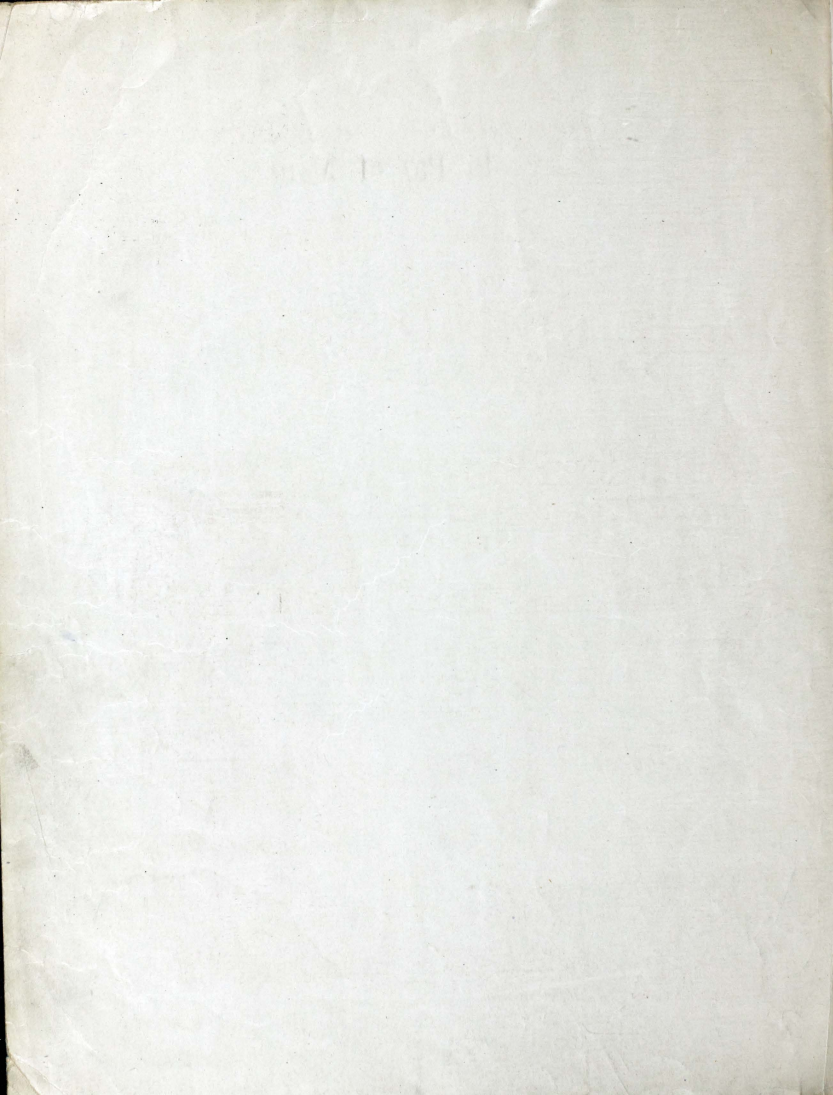
G. RICORDI & CO., INC.

14 EAST 43RD STREET  
NEW YORK

And at  
LONDON, PARIS,  
ROME, PALERMO, NAPLES,  
BUENOS AYRES AND MILAN



*G. Ricordi*



# Dear old Pal of Mine

3

Words by  
HAROLD ROBÈ

Music by  
LIEUT GITZ RICE  
*First Canadian Contingent*

Andante con espressione L. H.

Piano

All my life is emp-ty, Since I went a-way, Skies don't seem to be so  
clear, May some an-gel sen-try, Guard you while I stray, And  
fate be kind to join us some sweet day.

*mp* *mp* *L.H.R.H.* *rall.*



## Refrain

Oh, How I want you, Dear old pal of mine.

*a tempo mp*

Each night and day I pray you're al - ways mine.

Sweet - heart may God ' bless you, An - gel hands ca - ress you

While sweet dreams rest you Dear old pal of mine.

*poco a poco rit.*

*L. H.*

Dear-ie I so lone-ly, How I miss your smile, And your ten-der lov-ing

*mp*

way I just want you on-ly Want you all the while May

*L. H. R. H.*

God de - cree I have you back some day.

*rall.*

## Refrain

Oh, How I want you, Dear old pal of mine.

*a tempo*  
*mp*

Each night and day I pray you're al - ways mine.

Sweet-heart may God bless you, An - gel hands ca - ress you

While sweet dreams rest you Dear old pal of mine.

*poco* - *a* - *poco* - *rit.*



# Rockin' The Boat

FOX TROT

HUGO FREY  
*Composer of* Havanola  
Callicoco, Mother's Garden

## Introduction

Piano

The introduction consists of two staves of music. The upper staff is in treble clef and the lower staff is in bass clef. The key signature has two flats (B-flat and E-flat), and the time signature is 2/4. The music begins with a piano (*p*) dynamic. The melody in the right hand features a series of eighth and sixteenth notes, while the left hand provides a steady accompaniment of eighth notes.

The first system of the main piece continues the melody from the introduction. It features a repeat sign at the beginning. The right hand has a melodic line with eighth and sixteenth notes, and the left hand has a bass line with eighth notes. The dynamic is piano (*p*).

The second system continues the melody. The right hand has a melodic line with eighth and sixteenth notes, and the left hand has a bass line with eighth notes. The dynamic is piano (*p*).

The third system concludes the piece with two endings. The first ending (marked '1') leads back to the beginning of the main piece. The second ending (marked '2') concludes the piece with a final cadence. The right hand has a melodic line with eighth and sixteenth notes, and the left hand has a bass line with eighth notes. The dynamic is piano (*p*).

SUNG BY  
MR. JOHN Mc CORMACK  
AT ALL HIS ENGAGEMENTS



Little Mother of Mine

Words by  
WALTER H. BROWN

Music by  
H. T. BURLEIGH

Andante cantabile

Voice

Piano

Some.

times in the hush of the eve - ning hour, When shad - ows creep from the west — I