

Cornetto 2 **Missa Archi Episcopalis**

**Sonata tacet**

**Andreas Hofer**

**Kyrie**

Musical score for the Kyrie section, Cornetto 2 part. The score consists of four staves of music. The first staff begins with a treble clef, a common time signature, and a measure number of 17. The second staff starts at measure 29 and includes a trill marking [t]. The third staff starts at measure 36. The fourth staff starts at measure 42 and ends with a double bar line. The music features various rhythmic patterns, including eighth and sixteenth notes, and rests.

**Gloria**

Musical score for the Gloria section, Cornetto 2 part. The score consists of seven staves of music. The first staff begins with a treble clef and a common time signature. The second staff starts at measure 4. The third staff starts at measure 7 and includes a trill marking [t] and a measure number of 6. The fourth staff starts at measure 17 and includes trill markings [t] and a measure number of 4. The fifth staff starts at measure 25. The sixth staff starts at measure 28 and includes a measure number of 3 and a dynamic marking *p*. The seventh staff starts at measure 35 and includes measure numbers 5 and 5. The music features various rhythmic patterns, including eighth and sixteenth notes, and rests.

49

2



52



56



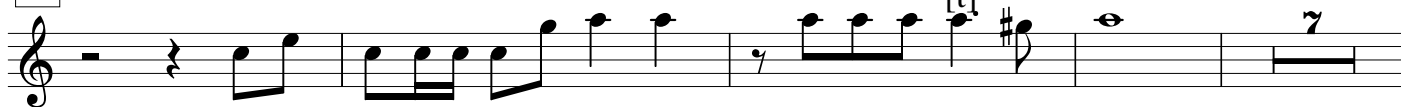
## Credo



6



12



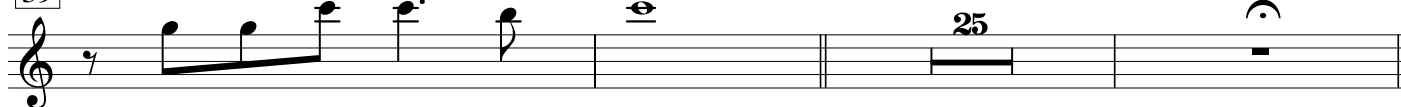
23



28



39



3

# Et resurrexit

67



78



87



95



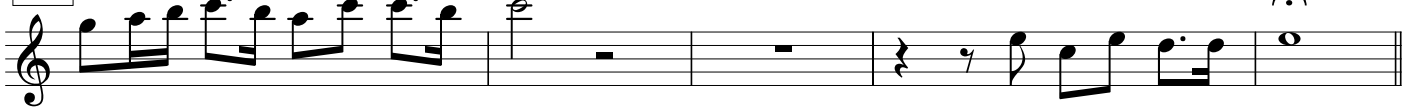
106



118



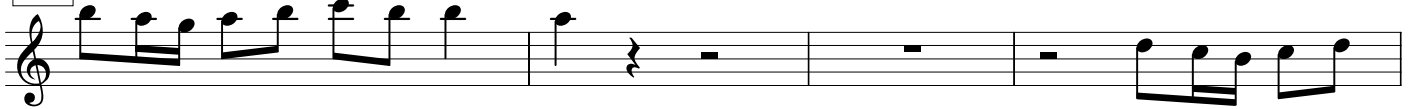
133



138



147



151



# Sanctus

Musical notation for the Sanctus section, measures 1-11 and 12-20. The first system (measures 1-11) includes a fermata over measure 7 and a measure rest in measure 11. The second system (measures 12-20) includes a fermata over measure 19 and a measure rest in measure 18. The key signature has one flat (B-flat), and the time signature is common time (C). The notation includes various note values, rests, and dynamic markings.

# Osanna

Musical notation for the Osanna section, measures 21-53. The first system (measures 21-41) includes a fermata over measure 17 and a measure rest in measure 21. The second system (measures 42-47) includes a measure rest in measure 42. The third system (measures 48-53) includes a measure rest in measure 53. The key signature has one flat (B-flat), and the time signature is 6/4. The notation includes various note values, rests, and dynamic markings.

Benedictus tacet

# Osanna

Musical notation for the second Osanna section, measures 85-122. The first system (measures 85-105) includes a fermata over measure 17 and a measure rest in measure 85. The second system (measures 106-113) includes a measure rest in measure 106. The third system (measures 114-117) includes a measure rest in measure 114. The fourth system (measures 118-122) includes a measure rest in measure 118. The key signature has one flat (B-flat), and the time signature is 6/4. The notation includes various note values, rests, and dynamic markings.

5 **Agnus Dei**

