

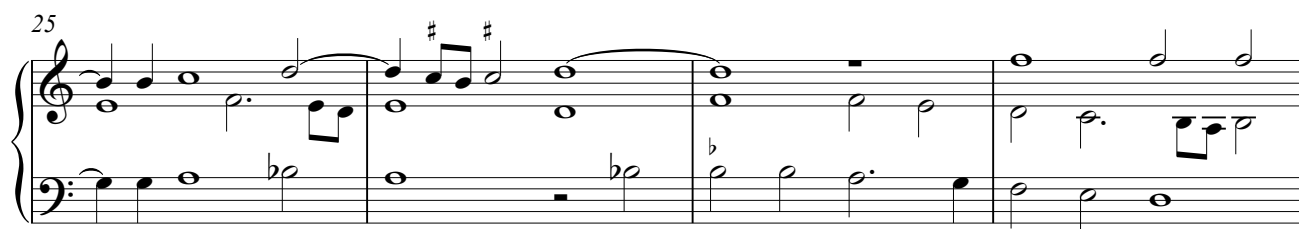
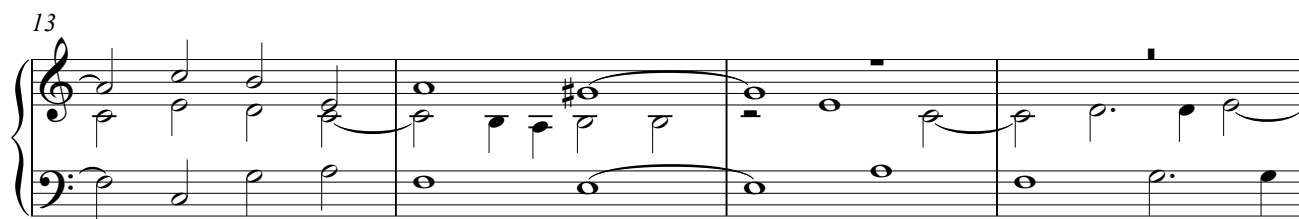
# Ego dixi Domine, miserere mei

Motettarum trium vocum 1577 12, Magnum opus musicum 42

come stà

Orlande de Lassus (Mons 1532 - München 1594)

Transcription Arnold den Teuling 2018



29

29

32

32

36

36

39

39

42

42

46

46

50

50

53

Measures 53-56: The piece begins with a treble clef and a key signature of one flat. Measure 53 features a half note G4 in the treble and a whole note F3 in the bass. Measures 54-55 show a melodic line in the treble with eighth and quarter notes, while the bass provides a steady accompaniment. Measure 56 concludes the system with a half note G4 in the treble and a whole note F3 in the bass.

57

Measures 57-60: The melodic line in the treble continues with eighth and quarter notes. Measure 58 includes a triplet of eighth notes. Measure 59 features a half note G4 in the treble and a whole note F3 in the bass. Measure 60 ends with a half note G4 in the treble and a whole note F3 in the bass.

61

Measures 61-63: The treble staff shows a melodic line with eighth and quarter notes. Measure 62 includes a half note G4 in the treble and a whole note F3 in the bass. Measure 63 ends with a half note G4 in the treble and a whole note F3 in the bass.

64

Measures 64-66: The treble staff continues with a melodic line. Measure 65 includes a half note G4 in the treble and a whole note F3 in the bass. Measure 66 ends with a half note G4 in the treble and a whole note F3 in the bass.

67

Measures 67-69: The treble staff shows a melodic line. Measure 68 includes a half note G4 in the treble and a whole note F3 in the bass. Measure 69 ends with a half note G4 in the treble and a whole note F3 in the bass.

70

Measures 70-72: The treble staff shows a melodic line. Measure 71 includes a half note G4 in the treble and a whole note F3 in the bass. Measure 72 ends with a half note G4 in the treble and a whole note F3 in the bass.

73

Measures 73-76: The treble staff shows a melodic line. Measure 74 includes a half note G4 in the treble and a whole note F3 in the bass. Measure 75 ends with a half note G4 in the treble and a whole note F3 in the bass. Measure 76 concludes the system with a half note G4 in the treble and a whole note F3 in the bass.

The image displays a musical score for a piece by Johann Sebastian Bach, titled 'Ego dixi - come stà'. The score is presented in three systems, each with a grand staff (treble and bass clefs). The first system, starting at measure 77, shows a melodic line in the treble clef and a supporting bass line. The second system, starting at measure 80, continues the melodic and bass lines. The third system, starting at measure 82, concludes the piece with a final cadence. The notation includes various note values, rests, and bar lines, indicating the structure and timing of the music.

The editions 1576, 1577 and 1604, do not give bar lines, but it was usual to use them in keyboard intabulations.

The piece has been notated with chiavette or high clefs, meaning that it should be performed a fifth down. This is the version come stà, at its notated pitch. I made an edition alla quinta bassa, a fifth down, as well.

See my edition for voices or instruments for the text, translation and critical notes.