



# 音樂短劇-生日會

Cheng-Shiun

♩ = 80

2

4

*mp*

3

10

6

21

2

27

2

33

8

45

2

50

3

57

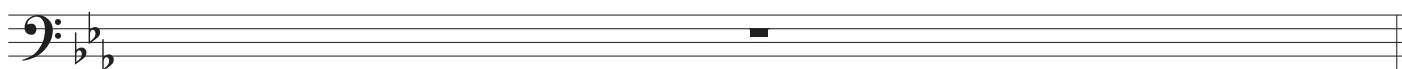
62

2

68



73

74  $\text{♩} = 56$ 

79



82



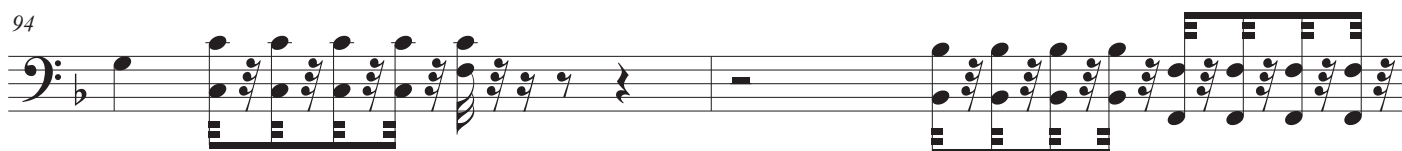
83



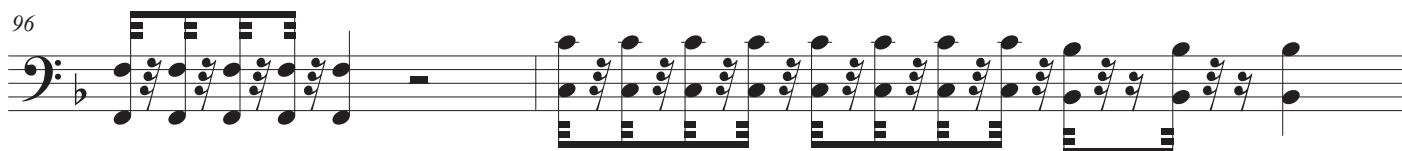
88



94



96



98

100

105

111

$\text{♩} = 40$

122

$\text{♩} = 80$

132

$\text{♩} = 56$

145

152

159

163

2 3

171

176

4

182

2 2

*mp*

190

8

203

2

209

6 5

*mp*

223

5

232

2

234

5

*mp*

Detailed description: This musical staff shows measure 234. It begins with a whole rest, followed by a quarter note G3, a quarter note F3, a quarter note E3, and a quarter note D3. A slur covers these four notes. This is followed by another whole rest, then a whole note chord consisting of G2, F2, E2, and D2. A '5' is written above this chord. The staff ends with a quarter note G2, a quarter note F2, and a quarter note E2.

244

12

Detailed description: This musical staff shows measure 244. It consists of a single whole note chord: G2, F2, E2, and D2. A '12' is written above the chord.

256

4

*mp*

Detailed description: This musical staff shows measure 256. It starts with a whole rest, followed by a quarter rest, then a quarter note G3, a quarter note F3, a quarter note E3, and a quarter note D3. A slur covers these four notes. This is followed by a quarter rest, then a quarter note G3, a quarter note F3, a quarter note E3, and a quarter note D3. A slur covers these four notes. The staff ends with a quarter note G3, a quarter note F3, and a quarter note E3.

264

3

Detailed description: This musical staff shows measure 264. It begins with a repeat sign, followed by a whole rest, then a quarter rest, then a quarter note G3, a quarter note F3, a quarter note E3, and a quarter note D3. A slur covers these four notes. This is followed by a quarter note G3, a quarter note F3, a quarter note E3, and a quarter note D3. A slur covers these four notes. The staff ends with a quarter note G3, a quarter note F3, and a quarter note E3.

270

3

Detailed description: This musical staff shows measure 270. It consists of a continuous eighth-note pattern: G3, F3, E3, D3, G3, F3, E3, D3. This is followed by a quarter note G3, a quarter note F3, and a quarter note E3. A '3' is written above the final three notes.

276

Detailed description: This musical staff shows measure 276. It consists of a whole note chord: G2, F2, E2, and D2.

277

5

*mf*

4

Detailed description: This musical staff shows measure 277. It starts with a whole rest, followed by a quarter rest, then a quarter note G3, a quarter note F3, a quarter note E3, and a quarter note D3. A slur covers these four notes. This is followed by a quarter note G3, a quarter note F3, a quarter note E3, and a quarter note D3. A slur covers these four notes. The staff ends with a quarter note G3, a quarter note F3, and a quarter note E3. A '5' is written above the first four notes, and a '4' is written above the last four notes.

289

Detailed description: This musical staff shows measure 289. It begins with a whole rest, followed by a quarter rest, then a quarter note G3, a quarter note F3, a quarter note E3, and a quarter note D3. A slur covers these four notes. This is followed by a quarter note G3, a quarter note F3, a quarter note E3, and a quarter note D3. A slur covers these four notes. The staff ends with a quarter note G3, a quarter note F3, and a quarter note E3.

293

Detailed description: This musical staff shows measure 293. It consists of a continuous eighth-note pattern: G3, F3, E3, D3, G3, F3, E3, D3. This is followed by a quarter note G3, a quarter note F3, and a quarter note E3.

296 *mp* 8

Musical notation for measure 296 in bass clef, key of B-flat major. It features a triplet of eighth notes, followed by a quarter note, and then an eighth rest. The measure concludes with an 8-measure rest.

307 3 5

Musical notation for measure 307 in bass clef, key of B-flat major. It begins with a quarter note, followed by a quarter rest, then a triplet of eighth notes, a quarter note, and a quarter rest. The measure ends with a 5-measure rest.

318 *mp*

Musical notation for measure 318 in bass clef, key of B-flat major. It consists of a series of chords and eighth notes, ending with a quarter rest.

323 3 9

Musical notation for measure 323 in bass clef, key of B-flat major. It starts with a quarter note, followed by a quarter rest, then a triplet of eighth notes, a quarter note, and a quarter rest. The measure concludes with a 9-measure rest.

338

Musical notation for measure 338 in bass clef, key of B-flat major. It features a sequence of chords and eighth notes, ending with a quarter note.

339 *mf* 2 2

Musical notation for measure 339 in bass clef, key of B major. It begins with a 2-measure rest, followed by a quarter note, then a triplet of eighth notes, a quarter note, and a quarter rest. The measure ends with another 2-measure rest.

345 5

Musical notation for measure 345 in bass clef, key of B major. It starts with a quarter note, followed by a quarter rest, then a triplet of eighth notes, a quarter note, and a quarter rest. The measure concludes with a 5-measure rest.

354 2

Musical notation for measure 354 in bass clef, key of B major. It begins with a quarter rest, followed by a quarter note, then a triplet of eighth notes, a quarter note, and a quarter rest. The measure ends with a 2-measure rest.

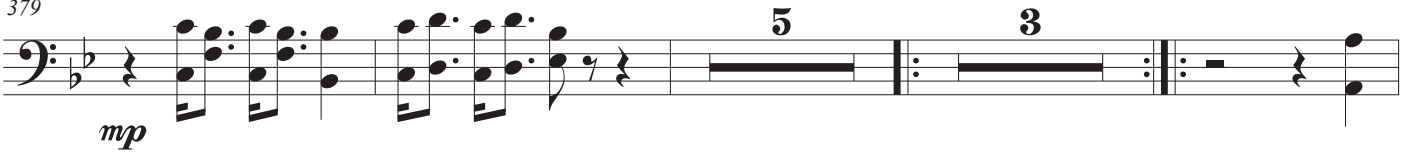
358 *mp* 8 8

Musical notation for measure 358 in bass clef, key of B-flat major. It starts with an 8-measure rest, followed by a quarter note, then a triplet of eighth notes, a quarter note, and a quarter rest. The measure concludes with another 8-measure rest.

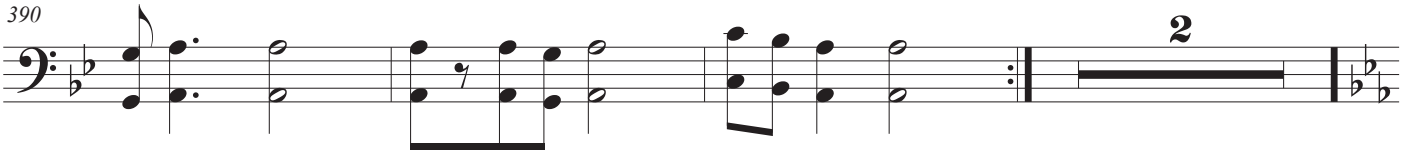
377



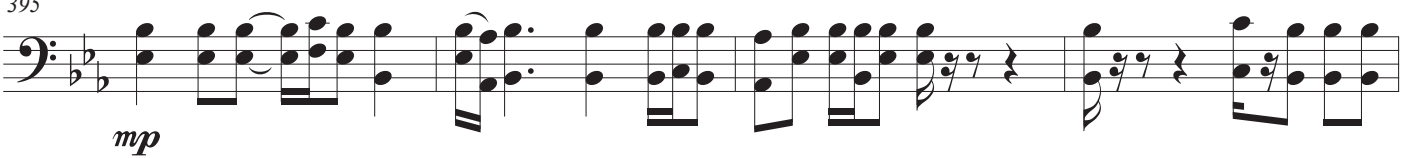
379



390



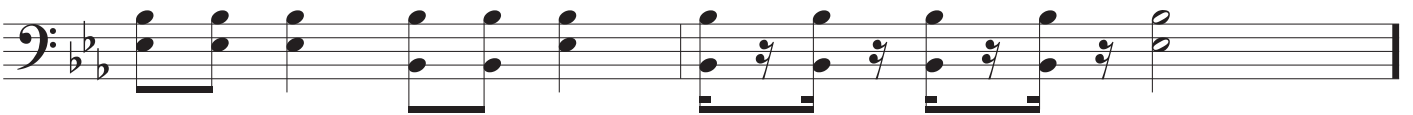
395



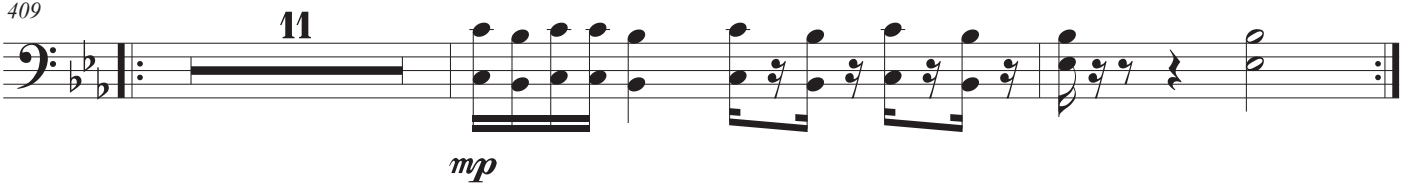
399



407



409



看哪，我的佳偶，你是美麗的！  
你是美麗的！你的眼好像鴿子。

*How beautiful you are, my darling!*

*Oh, How beautiful Your eyes are doves. Song of songs 1:15*