

741

Tenor I.



Palestrina.

Kyrie.

Ky - ri - e e - lei - son, Ky - - - ri - e
 e - lei - son, Ky - ri - e e - lei - - - son,
 Ky - ri - e e - lei - - - son, Ky - ri - e
 e - leison, e - lei - - - son, Ky - ri - e e - le - i - son.

Quatuor.

Chri - ste e - le - i - son, Chri - ste e - lei - - - son,
 Chri - ste e - lei - - - son, Chri -
 - ste e - lei - - - son, Chri - ste e - lei - - -
 - - - son, Chri - ste e - lei - - - son.
Ky - rie e - lei - son, e - le - - - i - son, Ky - ri - e e -
 - le - i - son, Ky - ri - e e - lei - - - son,
 Ky - ri - e e - le - i - son, e - lei - son, Ky - ri - e e - le - i - son,
 Ky - ri - e e - le - i - son, e - le - i - son.

Gloria.

Et in ter-ra pax ho-mi - ni - bus. Lau-da-mus te,
 be-ne - di-ci-mus te, a - do-ra-mus te, glo-ri-fi - ca-mus
 te. Gra - ti - as a - - gi-mus ti - - bi. Do-mi-
 - ne De - us, Rex coe - - le - stis, De - us Pa - ter, De-us Pa-
 - ter o-mni - po-tens, o - - mni-po-tens. Je - su Chri - -
 - ste. Do - mi-ne De-us, Do - mi-ne De-us, Agnus De-i, Fi-
 - li-us Pa - - tris, Fi - li-us Pa - tris.
 Qui tol-lis pec-ca-ta mun - - - di, mi - se-re-re no - -
 - bis. Qui tol-lis pec - ca-ta mun - - di, su - sci-pe de - pre-ca-ti-
 - o-nem no - - stram. Qui se-des ad de - xte-ram Pa - - - tris,
 mi - se-re-re no - - - bis. Quo - ni-am tu so-lus
 san-ctus, tu so-lus al - tis - si-mus Je - su Chri-ste, cum san - cto Spi-
 - - ri-tu in glo-ri-a De-i Pa - tris, A-men, in glo-ri-a De-i Pa-

741



- tris, Amen, in glo-ri-a De-i Patris, A - - - men.

Credo. Patrem. **F**actorem coe-li et ter-rae, vi - si - bi - li - um o-mni-

- um. Et in u-num Do-mi-num Je - sum Christum, Fi-li-um

De - i u - ni-ge-ni - tum. Et ex Pa-tre na-tum, De-um de

De - o, lu - men de lu-mi - ne, De-um ve-rum, ge-ni - tum non fa-

- ctum, con-sub - stan-ti - a-lem Pa - tri, per quem o - mni-a fa - cta sunt.

Et prop-ter no-stram sa-lu - - tem de-scen-dit de coe - -

- - - lis. De Spi-ri-tu san-cto ex Ma - ri - a, et

 ho - mo fa - ctus est, et ho - mo fa - ctus est. **Crucifixus** tacet.

 Et in Spiritum. **Q**ui ex Pa-tre Fi - li - o - que pro-ce - dit. Qui cum Pa-tre et

Fi - li - o si - mul a - do - ra - - - tur, et con-glo - ri - fi - ca - - -

- tur, qui lo-cu-tus est per Pro-phe-tas, per Pro-phe-

- tas. Et u-nam san-ctam ca-tho-li - cam et a-po - sto-li - cam Ec - cle - si - am.

Tenor I.



Con - fi - te - or u - num ba - ptis - ma in re - mis - si - o - nem pec - ca - to -
 - rum. Et ex - pe - cto re - sur - re - cti - o - nem mor - tu - o - rum.
 Et vi - tam ven - tu - ri sae - cu - li, et vi - tam ven -
 - tu - ri sae - cu - li, A - - - - men.

Sanctus.



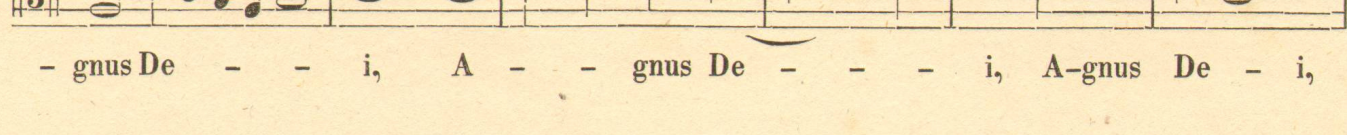
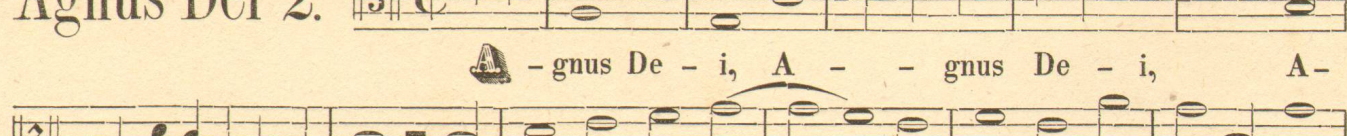
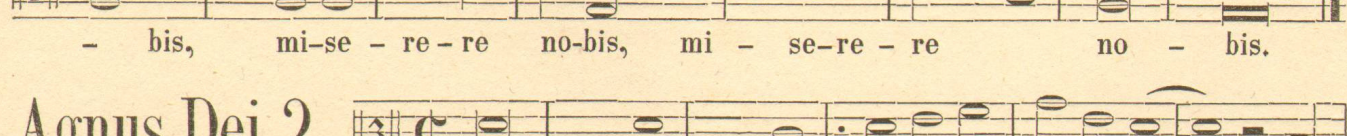
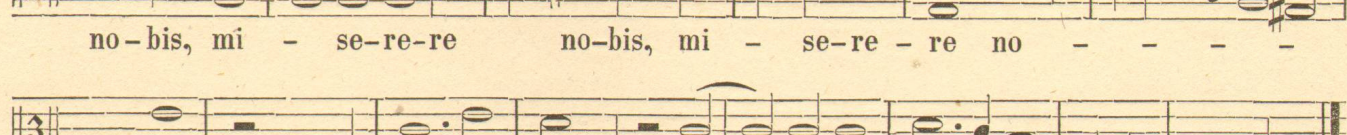
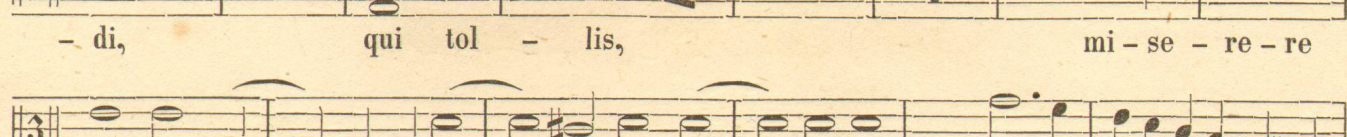
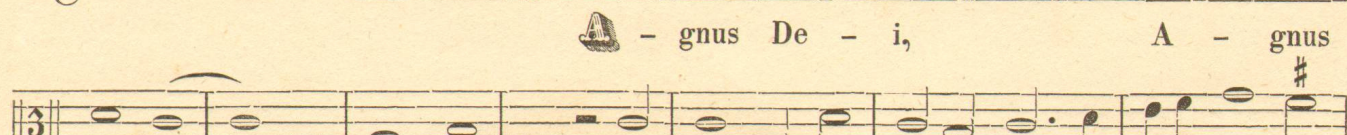
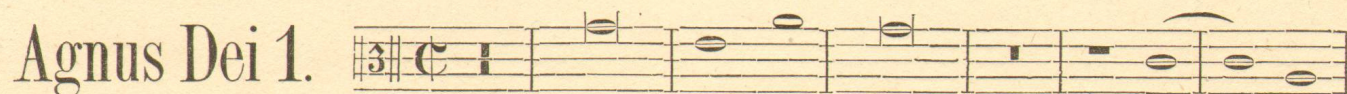
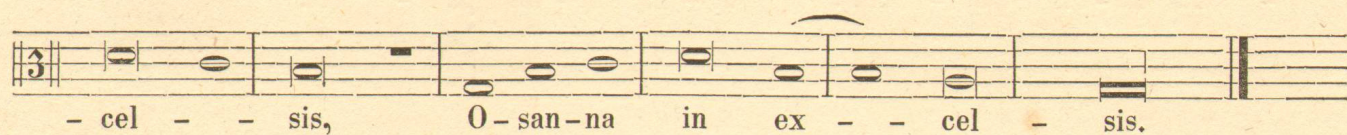
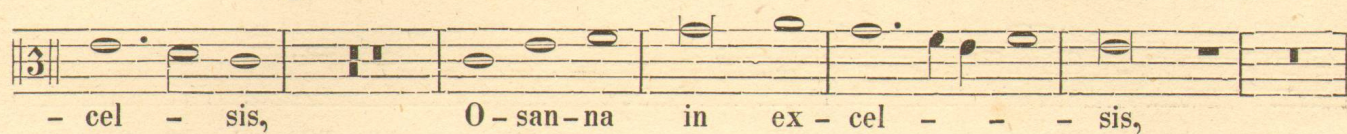
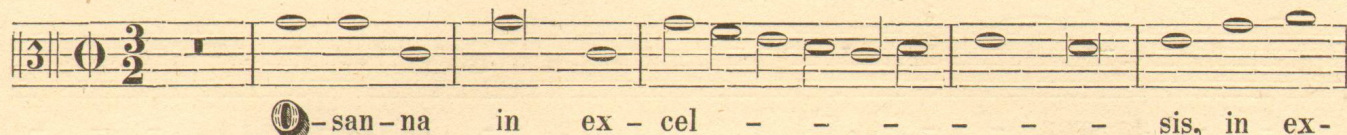
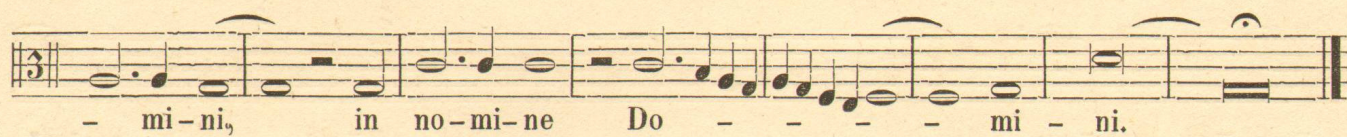
San - ctus, San - ctus, San - ctus, Do - mi - nus De -
 - ctus, San - ctus, Do - mi - nus De -
 - us, Do - mi - nus De - us Sa - ba - oth, Sa - ba - oth,
 Do - mi - nus De - us Sa - ba - oth, Do -
 - mi - nus De - us, Do - mi - nus De - us Sa - ba - oth, Sa - ba -
 - oth. Ple - ni sunt coe - li et ter - ra glo - ri - a tu -
 - a. O - san - na in ex - cel - sis.

Quatuor Vocum.

Benedictus.



Be - ne - di - ctus qui ve -
 - nit, be - ne - di - ctus qui ve - nit, qui ve -



A - - - gnus De - i, qui tol - lis pec -
 - ca - ta mun - di, qui tol - lis pec - ca -
 - - ta mun - - di, do - na no - bis pa - - -
 - - cem, pa - - - cem, do - na no - bis pa - cem, do -
 - na no - bis pa - cem, do - na no - bis pa - cem.

