

# MENUET in F MAJOR

(from: *Pièces de Clavecin* - 1689)  
for 2 Flugelhorn and Bass Trombone

Score (02':00")

Jean-Henri D'Anglebert (1629 - 1691)

Arr. Michel Rondeau

Allegretto ♩ = 100

Flugelhorn 1

Flugelhorn 2

Bass Trombone

7

Flghn. 1

Flghn. 2

B. Tbn.

13

Flghn. 1

Flghn. 2

B. Tbn.

MENUET in F MAJOR - D'Anglebert - Score

19

Flghn. 1

Flghn. 2

B. Tbn.

Trill (tr) in Flghn. 2, measure 20.

24

Flghn. 1

Flghn. 2

B. Tbn.

Trills (tr) in Flghn. 1, measures 25, 26, and 28.

Trills (tr) in Flghn. 2, measures 28 and 29.

29

Flghn. 1

Flghn. 2

B. Tbn.

Trill (tr) in Flghn. 1, measure 30.

# MENUET in F MAJOR

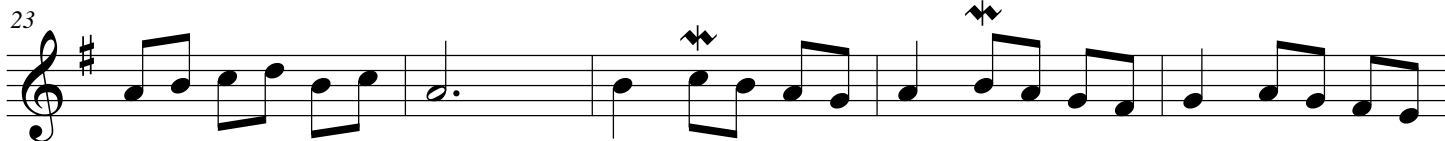
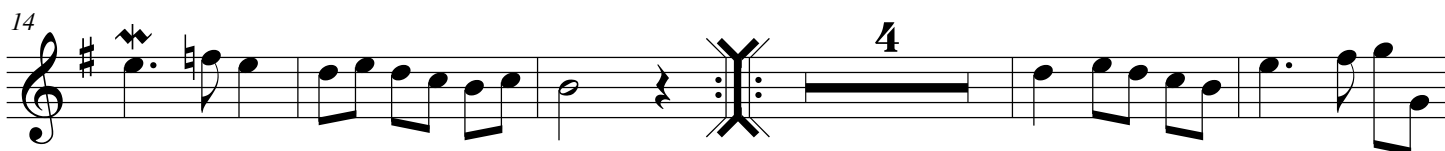
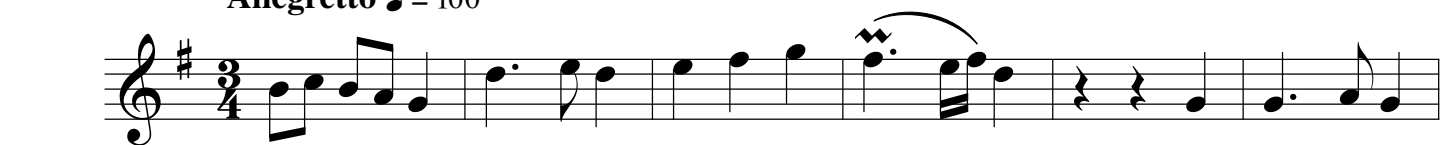
(from: *Pièces de Clavecin - 1689*)  
for 2 Flugelhorn and Bass Trombone

## B $\flat$ Flugelhorn 1

Jean-Henri D'Anglebert (1629 - 1691)

Arr. Michel Rondeau

Allegretto ♩ = 100



# MENUET in F MAJOR

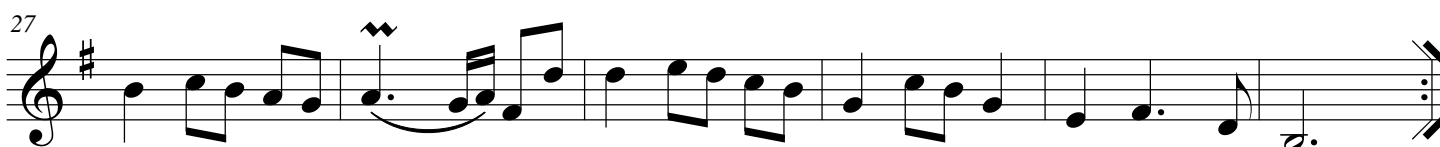
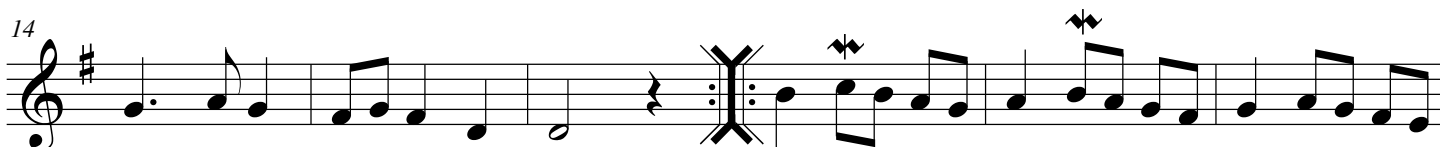
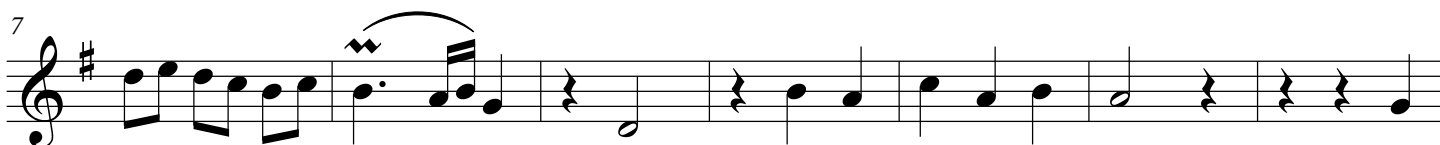
(from: *Pièces de Clavecin* - 1689)  
for 2 Flugelhorns and Bass Trombone

## B $\flat$ Flugelhorn 2

Jean-Henri D'Anglebert (1629 - 1691)

Arr. Michel Rondeau

Allegretto ♩ = 100



# MENUET in F MAJOR

(from: *Pièces de Clavecin* - 1689)  
for 2 Flugelhorn and Bass Trombone

## Bass Trombone

Jean-Henri D'Anglebert (1629 - 1691)  
Arr. Michel Rondeau

Allegretto ♩ = 100

