

Alexander Borodin
Symphony No. 2 in B Minor

FAGOTTO II.

Allegro. 1

11 *f* Animato assai.

18 un poco rit. 1

25 **A** Tempo I. *ff*

32 animato

38 *fz* *mf*

43 *sf*

48 **B**

53

59 *p* *cresc.* *sf*

73 **C** un poco rit. 1

Borodin — Symphony No. 2 in B Minor

2

FAGOTTO II.

78 Poco meno mosso. **1** **1** **mf**

83 **1** **p** poco accel.

90 Animato assai. **mf cresc.** **ff** **ff**

96 **D**

102 **mf**

111 **1** **mf**

120 **dim.** **p dim.** **11**

141 **E** Poco meno mosso. **p** **2**

151 **p** poco string. **p** **3**

163 **F** Animato assai **1** **2** **8**

169 **4** **5** **6** **cresc.**

173 **8** **G** **f** **f**

Borodin — Symphony No. 2 in B Minor

FAGOTTO II.

178

ff *fz*

186

Animato assai.

mf *ff*

191

H

f *mf*

196

mf *f* *pp*

207

p *ff*
peresc.

215

220

mf *f* *ff*
marcato rall.

224 **K** Allegro. (Tempo I.)

fff *sfz*

232

241

Animato assai.

f *sfz*

249

f *sfz*

255

poco rit.

f *sfz*

Borodin — Symphony No. 2 in B Minor

FAGOTTO II.

4

263 **Poco meno mosso.** **1** **Fag.I.** **M** **Poco più animato.**

274

277 **poco a poco accel.**

280

283 **N** **Animato assai.**

288

293

299

311 **fff** **poco a poco accel e pesante**

319 **a tempo**

II. SCHERZO.

FAGOTTO II.

Prestissimo.

12

19

33 **A** 3 3 1

45 5 1 **B** 1

57 *f* *cresc.*

68 *ff*

76 **C** 7

90 7

104 **D** 1

113 3 *mf cresc.* *ff*

123 **E** *p poco cresc.* *dim.*

133 *cresc.* *dim.*

Detailed description: This is a page of musical notation for the second bassoon part of the Scherzo movement from Borodin's Symphony No. 2 in B Minor. The score is written in bass clef with a key signature of two flats (B minor) and a 2/4 time signature. It begins at measure 12 with a **Prestissimo** tempo marking. The notation includes various dynamics such as *p*, *f*, *mf*, *ff*, *cresc.*, and *dim.*, along with articulation marks like accents and slurs. There are several multi-measure rests (7 and 3 measures) and specific performance instructions for slurs and accents. The score is divided into sections labeled A, B, C, D, and E. Measure numbers 12, 19, 33, 45, 57, 68, 76, 90, 104, 113, 123, and 133 are clearly marked at the beginning of their respective staves.

Borodin — Symphony No. 2 in B Minor

FAGOTTO II.

6

146 Musical staff 146: Bass clef, B minor key signature. Starts with a fermata over a whole note B2. The staff contains a series of quarter notes: B2, A2, G2, F2, E2, D2, C2, B1. A dynamic marking *p* is placed below the staff. A finger number '2' is written above the final note.

156 *Allegretto.* Musical staff 156: Bass clef, B minor key signature. Starts with a fermata over a whole note B2. The staff contains a series of quarter notes: B2, A2, G2, F2, E2, D2, C2, B1. A dynamic marking *p* is placed below the staff. A finger number '1' is written below the first note. A dynamic marking *pp* is placed below the final note.

168 Musical staff 168: Bass clef, B minor key signature. Starts with a fermata over a whole note B2. The staff contains a series of quarter notes: B2, A2, G2, F2, E2, D2, C2, B1. Dynamic markings *cresc.* and *dim.* are placed above the staff. A finger number '3' is written above the final note. A dynamic marking *p* is placed below the final note.

179 Musical staff 179: Bass clef, B minor key signature. Starts with a fermata over a whole note B2. The staff contains a series of quarter notes: B2, A2, G2, F2, E2, D2, C2, B1. A dynamic marking *p* is placed below the staff. A dynamic marking *cresc.* is placed below the staff. A finger number '3' is written above the final note.

187 Musical staff 187: Bass clef, B minor key signature. Starts with a fermata over a whole note B2. The staff contains a series of quarter notes: B2, A2, G2, F2, E2, D2, C2, B1. A dynamic marking *mf* is placed below the staff.

192 *G* Musical staff 192: Bass clef, B minor key signature. Starts with a fermata over a whole note B2. The staff contains a series of quarter notes: B2, A2, G2, F2, E2, D2, C2, B1. Dynamic markings *cresc.* and *dim.* are placed above the staff. A finger number '3' is written above the final note.

202 Musical staff 202: Bass clef, B minor key signature. Starts with a fermata over a whole note B2. The staff contains a series of quarter notes: B2, A2, G2, F2, E2, D2, C2, B1. A dynamic marking *f* is placed above the staff. A dynamic marking *p* is placed below the staff. A finger number '2' is written above the first note. A finger number '7' is written above the final note.

219 Musical staff 219: Bass clef, B minor key signature. Starts with a fermata over a whole note B2. The staff contains a series of quarter notes: B2, A2, G2, F2, E2, D2, C2, B1. A dynamic marking *f* is placed below the staff. A finger number '7' is written above the final note.

232 Musical staff 232: Bass clef, B minor key signature. Starts with a fermata over a whole note B2. The staff contains a series of quarter notes: B2, A2, G2, F2, E2, D2, C2, B1. A dynamic marking *f* is placed below the staff. A finger number '3' is written above the final note.

241 Musical staff 241: Bass clef, B minor key signature. Starts with a fermata over a whole note B2. The staff contains a series of quarter notes: B2, A2, G2, F2, E2, D2, C2, B1. A dynamic marking *mf* is placed below the staff. A dynamic marking *f* is placed below the staff. A finger number '3' is written above the first note. A finger number '5' is written above the final note.

255 Musical staff 255: Bass clef, B minor key signature. Starts with a fermata over a whole note B2. The staff contains a series of quarter notes: B2, A2, G2, F2, E2, D2, C2, B1. A dynamic marking *p* is placed below the staff. A dynamic marking *f* is placed below the staff. A finger number '1' is written below the first note. A finger number '1' is written below the final note.

265 Musical staff 265: Bass clef, B minor key signature. Starts with a fermata over a whole note B2. The staff contains a series of quarter notes: B2, A2, G2, F2, E2, D2, C2, B1. A dynamic marking *cresc.* is placed below the staff. A dynamic marking *f* is placed below the staff.

Borodin — Symphony No. 2 in B Minor

FAGOTTO II.

274

282

296

310

321

328

337

345

355

366

377

394

Borodin — Symphony No. 2 in B Minor

III.

FAGOTTO II.

Andante. 2 3 A

16 B

23 C Poco animato. cantabile D

33 E mf f ff dim.

41 F Poco piu animato. mf

50 p mf cresc.

61 G mf f

73 H ff p cresc.

82 poco rit 1 | p cresc. poco meno mosso f

Tempo I ma piu animato. dim.

91 K mf

97 L dimia.

104 M p mf f

113 N Poco piu animato. rall. 1 O Tempo I.

p mf f rall. 1 O Tempo I.

(121) 6 alla ca

Borodin — Symphony No. 2 in B Minor

IV.
FINALE.

FAGOTTO II.

Allegro.

1 p cresc.

9 f p f

18 A

24 p

29 p ff

39 B mf ff p

45 cresc. C p

55 f ff

65 a tempo poco allarg. mf

72 cresc. D f p

79 p

83 Fag. I. rall.

1 2

Borodin — Symphony No. 2 in B Minor

10

FAGOTTO II.

E Lento. Allegro. rall. Lento Allegro. rall. a tempo.

(96) 2 1 1 2 1 1 2

Detailed description: This block shows the beginning of the score for Fagotto II. It consists of a single musical staff in bass clef. Above the staff, the tempo markings are: Lento., Allegro., rall., Lento, Allegro., rall., a tempo. Below the staff, the time signatures are indicated by numbers: (96) 2, 1, 1, 2, 1, 1, 2. The music begins with a whole note rest.

106 **Fag. I.**

5 6 *p* *cresc.*

Detailed description: This block contains musical notation for measures 106-111. It features a bass clef staff with a series of eighth and sixteenth notes. Above the staff, the fingerings 5 and 6 are indicated. Below the staff, the dynamics *p* and *cresc.* are present.

112 *cresc.*

Detailed description: This block contains musical notation for measures 112-117. It features a bass clef staff with a series of eighth and sixteenth notes. Above the staff, the dynamic *cresc.* is present.

118 **F**

ff *ff*

Detailed description: This block contains musical notation for measures 118-121. It features a bass clef staff with a series of eighth and sixteenth notes. Below the staff, the dynamics *ff* are present at the beginning and end of the phrase.

122

1 2 *mf*

Detailed description: This block contains musical notation for measures 122-127. It features a bass clef staff with a series of eighth and sixteenth notes. Above the staff, the fingerings 1 and 2 are indicated. Below the staff, the dynamic *mf* is present.

128

f *f* *fz* **G**

Detailed description: This block contains musical notation for measures 128-131. It features a bass clef staff with a series of eighth and sixteenth notes. Below the staff, the dynamics *f*, *f*, and *fz* are present. A section marker **G** is placed above the staff.

132 *cresc.* *fz* *f*

Detailed description: This block contains musical notation for measures 132-136. It features a bass clef staff with a series of eighth and sixteenth notes. Above the staff, the dynamic *cresc.* is present. Below the staff, the dynamics *fz* and *f* are present.

137 *cresc.* *fz* **H**

Detailed description: This block contains musical notation for measures 137-142. It features a bass clef staff with a series of eighth and sixteenth notes. Above the staff, the dynamic *cresc.* is present. Below the staff, the dynamic *fz* is present. A section marker **H** is placed above the staff.

143 *ff*

Detailed description: This block contains musical notation for measures 143-147. It features a bass clef staff with a series of eighth and sixteenth notes. Below the staff, the dynamic *ff* is present.

148 *poco allarg.* *f marcato* *mf* **a tempo.**

Detailed description: This block contains musical notation for measures 148-153. It features a bass clef staff with a series of eighth and sixteenth notes. Below the staff, the dynamics *poco allarg.*, *f marcato*, and *mf* are present. Above the staff, the tempo marking **a tempo.** is present.

154 *ff*

Detailed description: This block contains musical notation for measures 154-158. It features a bass clef staff with a series of eighth and sixteenth notes. Below the staff, the dynamic *ff* is present.

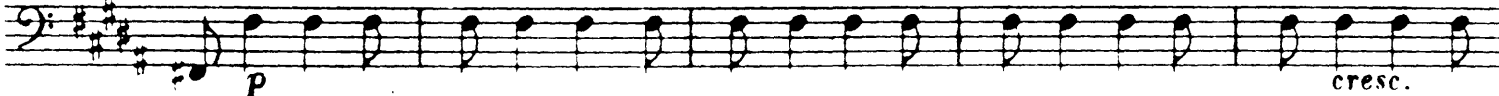
Borodin — Symphony No. 2 in B Minor

FAGOTTO II.

161



168



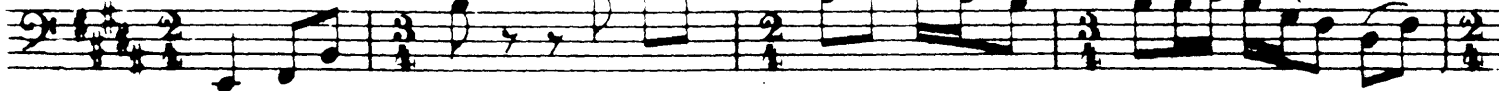
173



183



187



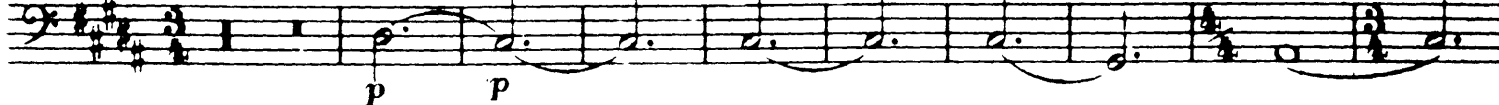
191



195



201



216



220



Borodin — Symphony No. 2 in B Minor

12

FAGOTTO II.

232 **M**
p

236
mf

240 *ff* *dim.*

244 *ff* poco a poco piu animato

248 *allarg.* *a tempo.*

253 **N** *ff animato*

260

265 **O** Tempo I. *f* *p* *p poco a poco piu animato.* 1 2 3 4

270 *cresc.* *f* *Vivo.* 5 6

276 *f* *fff* *Fine.*