

# GIGGE in G MAJOR

(from: *Fitzwilliam Virginal Book, FVB 190*)

for A Trumpet and Organ

Score (00':45'')

Allegro ♩ = 66

John Bull (ca.1562 - 1628)

Arr. Michel Rondeau

Trumpet in C

Organ

This system contains the first four measures of the piece. The Trumpet in C part is written in a single staff with a treble clef, a key signature of one sharp (F#), and a 6/8 time signature. It begins with a whole rest in the first measure, followed by a quarter rest, and then a melodic line of eighth notes. The Organ part is written in two staves (treble and bass clefs) with a 6/8 time signature. It features a rhythmic accompaniment of eighth notes in the right hand and a bass line of eighth notes in the left hand.

C Tpt.

Org.

This system contains measures 5 through 8. The C Trumpet part continues the melodic line from the previous system. The Organ part maintains its accompaniment, with some changes in the right hand's eighth-note pattern.

C Tpt.

Org.

This system contains measures 9 through 12. The C Trumpet part concludes the piece with a final melodic phrase. The Organ part provides a final accompaniment, ending with a sustained chord in the right hand and a final bass note in the left hand.

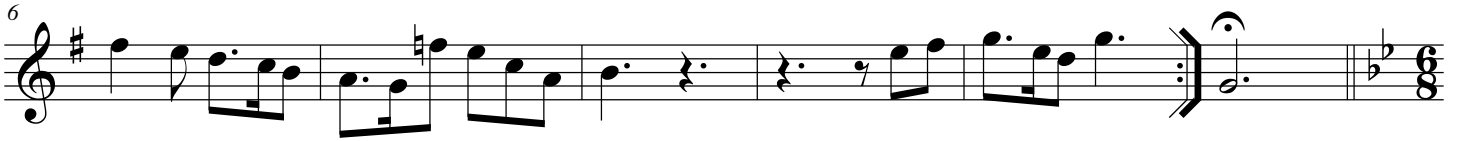
# GIGGE in G MAJOR

(from: Fitzwilliam Virginal Book, FVB 190)  
for A Trumpet and Organ

John Bull (ca.1562 - 1628)  
Arr. Michel Rondeau

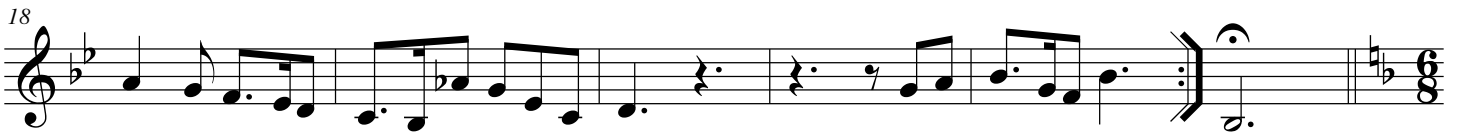
## Trumpet in C

Allegro ♩ = 66



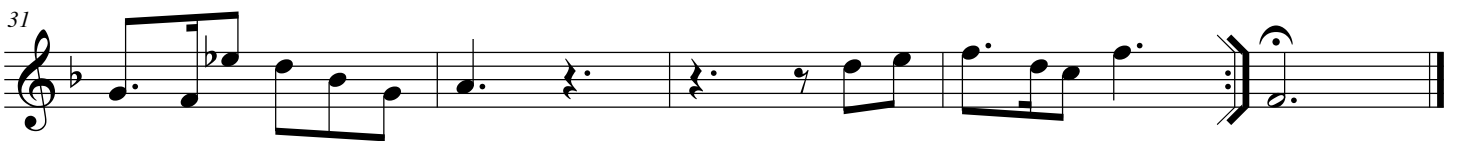
## Trumpet in A

Allegro ♩ = 66



## Trumpet in D

Allegro ♩ = 66



# GIGGE in G MAJOR

(from: Fitzwilliam Virginal Book, FVB 190)  
for A Trumpet and Organ

John Bull (ca.1562 - 1628)  
Arr. Michel Rondeau

## Organ

Trumpet in C

Allegro ♩ = 66

C Tpt.

Org.

C Tpt.

Org.