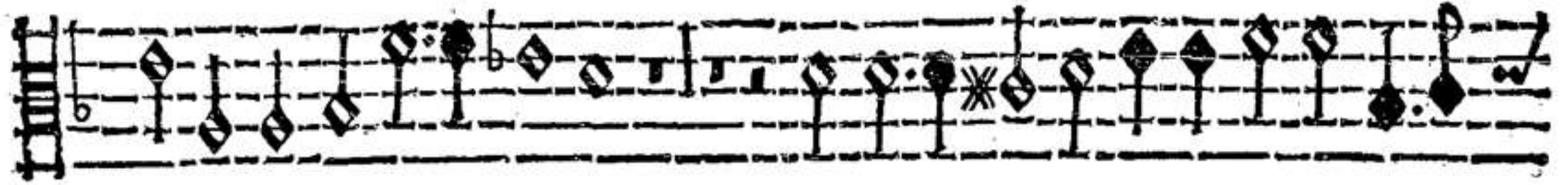




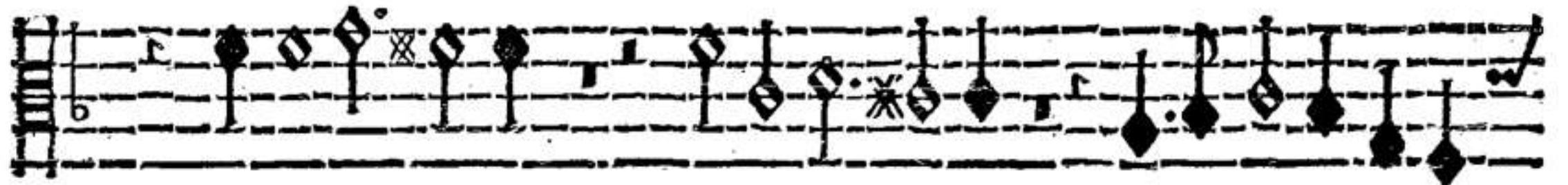
O= si talhor benche profa= ne co= se, siano ale



sacre: d'agguagliarsi indegne: suol ama= tor senza ch' a dir le veg=



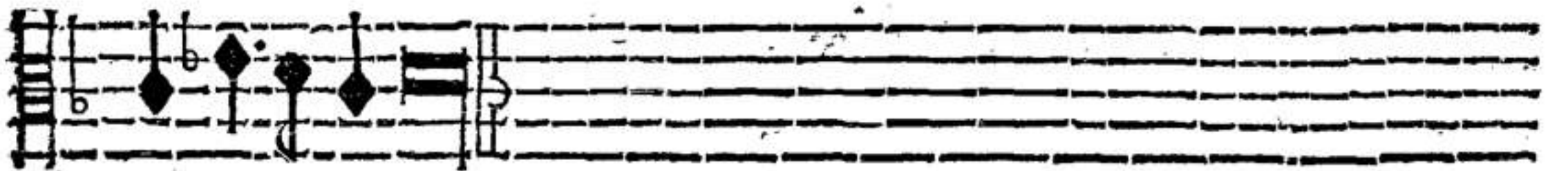
ne scole d'amora chino'l proua in seg= ne



con gliocchi ancora y. fauellar si puote,



fauellar si, fauellar si puote, si puote fauellar



si puo= te.

