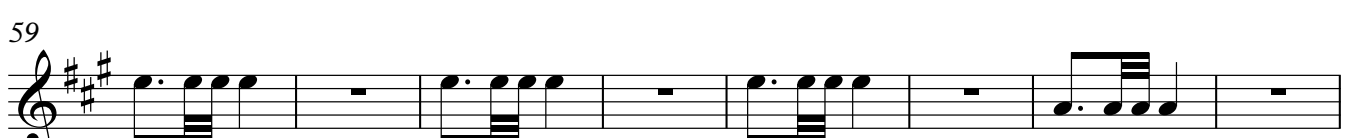
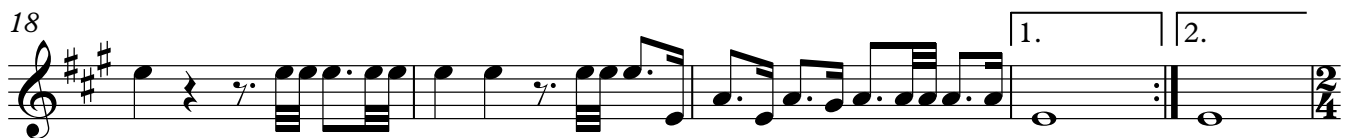
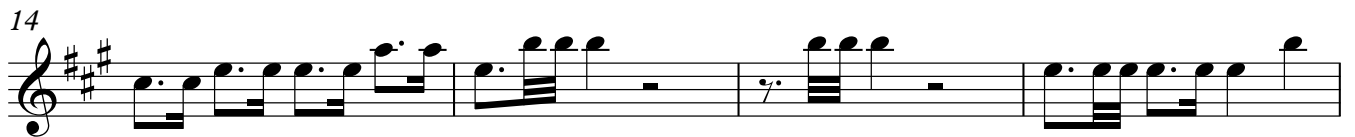
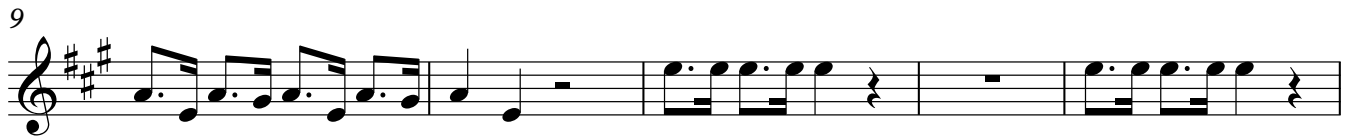


Ouverture K:D1

Horn in F 2

J.F.Fasch



Horn in F 2

67

2

78

4

f *p*

89

4

2

102

p *f*

111

2

120

2

128

2

137

2

145

2

f

155

p *f*

165

2

169



173



178



II Air



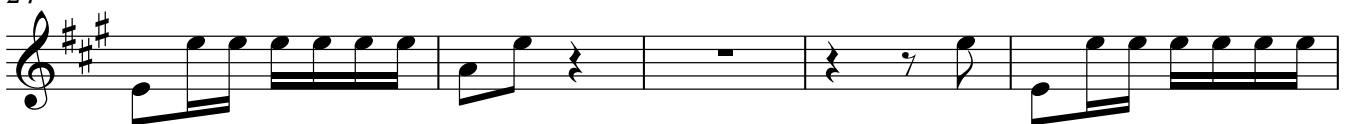
7



15



24



29



36

41

III

Allegro

11

24

37

50

56