

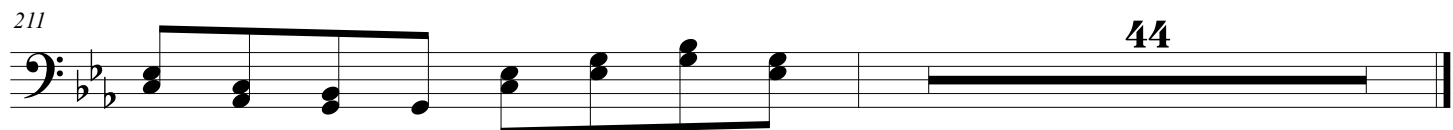
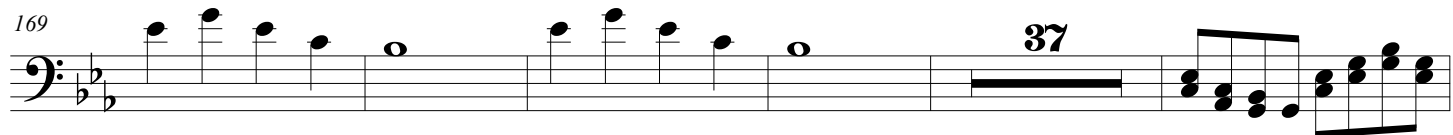
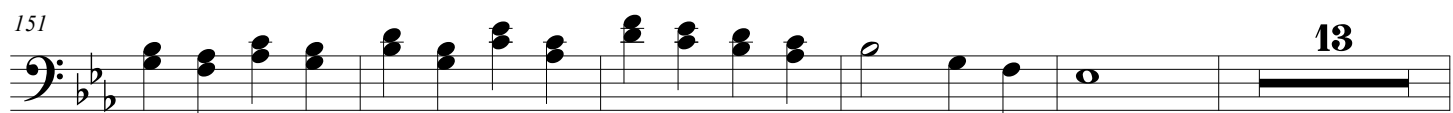
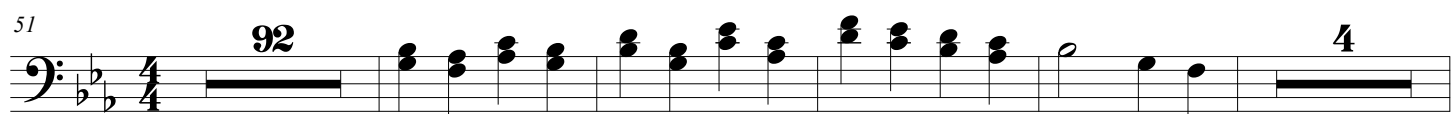
Bassoon **Symphony n°2 "Maestosa" in Eb Major, Op.21**

1st Movement - Lento cantabile, Chorale "Le Grand Ode"

FELIPE B. BRANDES

Lento con brio ♩ = 40

(Symphony dedicated to Ms. Luiza Cunha Puttini)



Bassoon

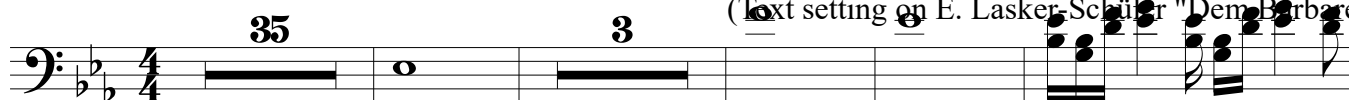
Symphony n°2 "Maestosa" in Eb Major, Op.21

3rd Movement - Largo sentimentale, cantabile

FELIPE B. BRANDES

(Symphony dedicated to Ms. Luiza CP)

(Text setting on E. Lasker-Schüler "Dem Barbaren")



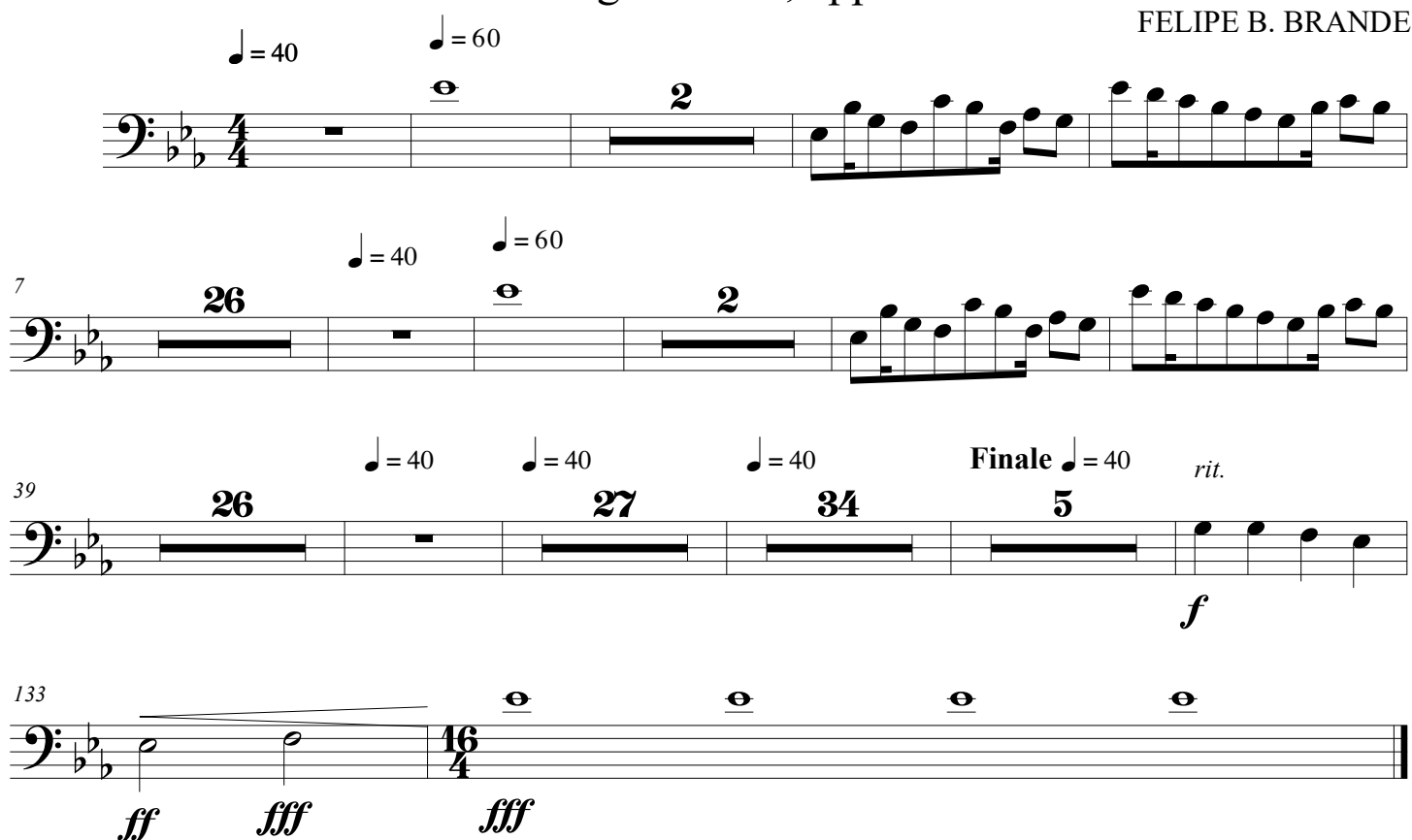
Bassoon

Symphony n°2 "Maestosa" in Eb Major, Op.21

4th Movement - Adagio eroico, appassionato - Finale

FELIPE B. BRANDES

♩ = 40 ♩ = 60



7 26 2 26 27 34 5 133 16 4

ff *fff* *f* *fff*

rit.

Bassoon 2

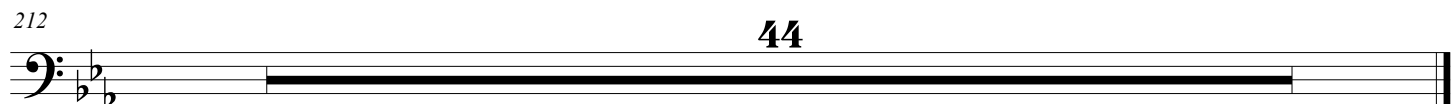
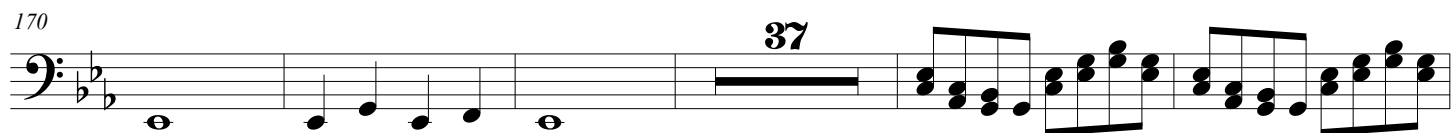
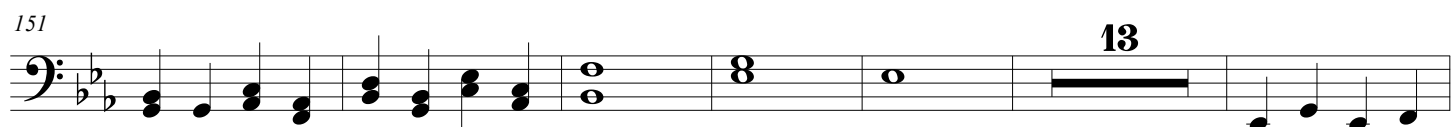
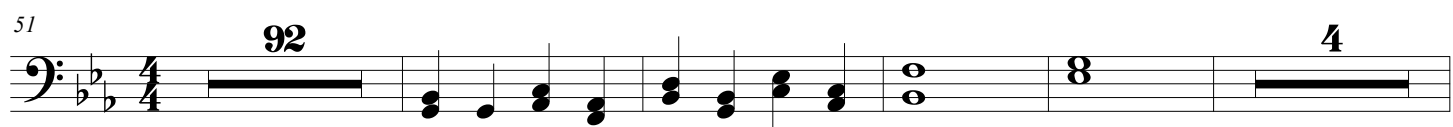
Symphony n°2 "Maestosa" in Eb Major, Op.21

1st Movement - Lento cantabile, Chorale "Le Grand Ode"

FELIPE B. BRANDES

Lento con brio ♩ = 40

(Symphony dedicated to Ms. Luiza Cunha Puttini)



Bassoon 2

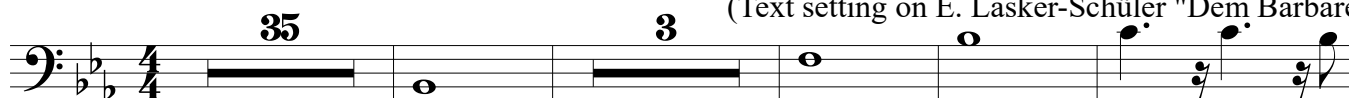
Symphony n°2 "Maestosa" in Eb Major, Op.21

3rd Movement - Largo sentimentale, cantabile

FELIPE B. BRANDES

(Symphony dedicated to Ms. Luiza CP)

(Text setting on E. Lasker-Schüler "Dem Barbaren")



Bassoon 2

4th Movement - Adagio eroico, appassionato - Finale

FELIPE B. BRANDES

♩ = 40

$\bullet = 60$

[illegible]

Contrabassoon

Symphony n°2 "Maestosa" in Eb Major, Op.21

1st Movement - Lento cantabile, Chorale "Le Grand Ode"

FELIPE B. BRANDES

Lento con brio ♩ = 40

(Symphony dedicated to Ms. Luiza Cunha Puttini)

12

29

4

2

4

4

51

92

8

4

151

54

8

44

211

Contrabassoon

Symphony n°2 "Maestosa" in Eb Major, Op.21

3rd Movement - Largo sentimentale, cantabile

FELIPE B. BRANDES

(Symphony dedicated to Ms. Luiza CP)

(Text setting on E. Lasker-Schüler "Dem Barbaren")

35 3 (Text setting on E. Lasker-Schüler "Dem Barbar")

The musical notation is written on a single staff in bass clef. The key signature has two flats (B-flat and E-flat), and the time signature is 4/4. The notation begins with a whole note B-flat, followed by a whole note E-flat, then a 3-measure rest (indicated by a '3' above the staff), then a whole note B-flat, and finally a whole note E-flat. The piece concludes with a double bar line.

43

43

56

Contrabassoon

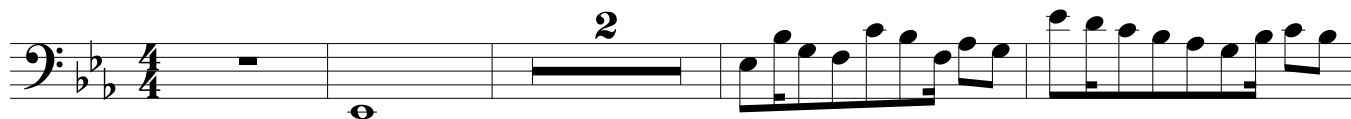
Symphony n°2 "Maestosa" in Eb Major, Op.21

4th Movement - Adagio eroico, appassionato - Finale

FELIPE B. BRANDES

♩ = 40

♩ = 60



♩ = 40

♩ = 60

7



♩ = 40

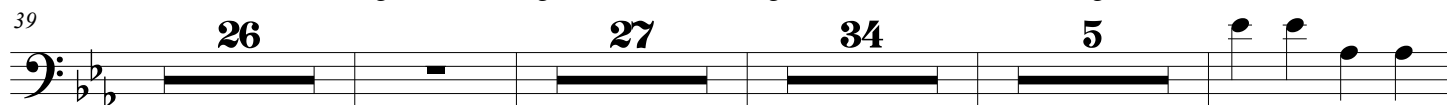
♩ = 40

♩ = 40

Finale ♩ = 40

rit.

39



f

133



ff

fff

fff