

Sonata B a 2 (Clav. et Pedal) di J. S. Bach.

The first system of the manuscript shows the beginning of the piece. It consists of three staves: the top staff is for the right hand, the middle for the left hand, and the bottom for the pedal. The music is written in a cursive hand with various note values and rests.

*Andante.*

8a

The second system contains measures 5 through 14. It continues the musical themes established in the first system, with complex rhythmic patterns and articulation.

15

The third system covers measures 15 to 20. The notation shows a continuation of the piece's melodic and harmonic development.

21

The fourth system contains measures 21 to 25. The music features more intricate rhythmic figures and dynamic markings.

26a

The fifth system shows measures 26 to 30. This section includes a triplet of eighth notes in the right hand, a characteristic feature of this piece.

31a

The sixth system contains measures 31 to 35. The piece concludes with a final cadence in the right hand and a sustained pedal point in the left hand.

38a

Handwritten musical notation for measures 38a through 44. The system consists of three staves. The top staff features a complex melodic line with many sixteenth and thirty-second notes. The middle and bottom staves provide harmonic accompaniment with similar rhythmic patterns.

45

Handwritten musical notation for measures 45 through 51. The notation continues with dense rhythmic patterns across three staves, showing a continuation of the complex texture from the previous system.

52a

Handwritten musical notation for measures 52a through 58. This system shows a change in the melodic contour, with more sustained notes and some triplet markings. The accompaniment remains active.

59

Handwritten musical notation for measures 59 through 63. The melodic line becomes more rhythmic and active again, with frequent sixteenth-note runs.

64

Handwritten musical notation for measures 64 through 69. The notation features a mix of melodic and rhythmic elements, with some longer note values interspersed with shorter ones.

70

Handwritten musical notation for measures 70 through 76. The system concludes with a final melodic phrase and accompaniment. The notation is dense and characteristic of Baroque or Classical keyboard music.

76

Handwritten musical notation for measures 76-82. The system consists of three staves. The top staff features a melodic line with various note values and rests. The middle and bottom staves provide harmonic accompaniment with rhythmic patterns.

83

Handwritten musical notation for measures 83-87. This system continues the piece with similar melodic and harmonic structures as the previous system.

88a

Handwritten musical notation for measures 88-92. The notation shows a continuation of the musical theme with some variations in the melodic line.

93a

Handwritten musical notation for measures 93-97. The system includes a variety of note values and rests, maintaining the piece's rhythmic complexity.

100a

Handwritten musical notation for measures 100-106. The notation features dense melodic passages and complex rhythmic accompaniment.

107

Handwritten musical notation for measures 107-113. The system concludes with a final melodic phrase and a complex rhythmic pattern.

Adagio e dolce

Handwritten musical notation for measures 1-4. The first staff is in treble clef, the second in alto clef, and the third in bass clef. The music is written in a cursive style with various note values and rests.

5a

Handwritten musical notation for measures 5-8. The notation continues on three staves, showing a continuation of the melodic and harmonic material.

10

Handwritten musical notation for measures 9-12. The notation continues on three staves, with some dynamic markings and phrasing slurs.

15

Handwritten musical notation for measures 13-16. The notation continues on three staves, showing a continuation of the melodic and harmonic material.

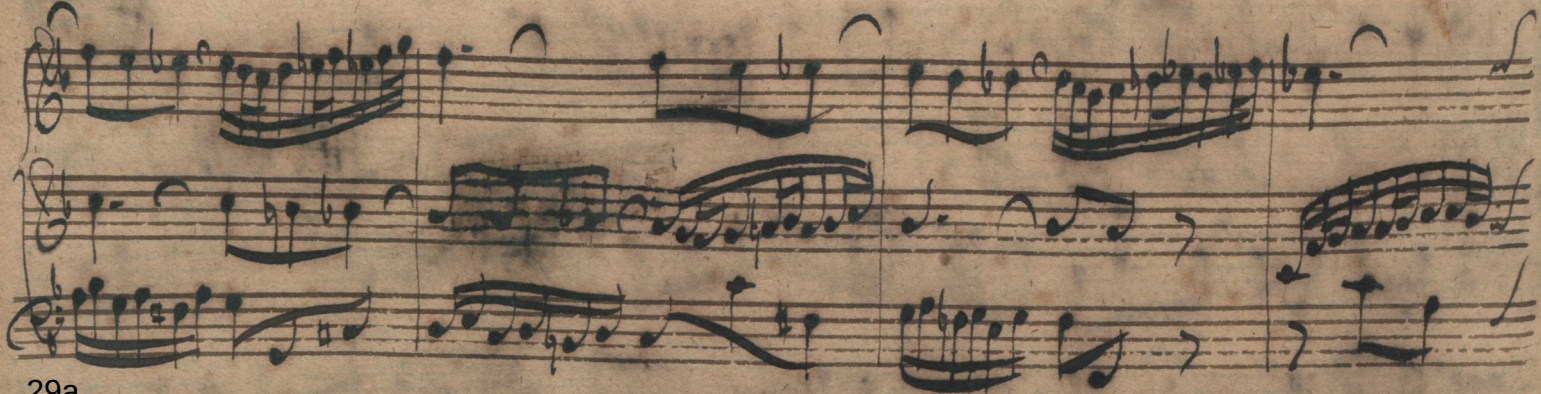
18a

Handwritten musical notation for measures 17-20. The notation continues on three staves, with some dynamic markings and phrasing slurs.

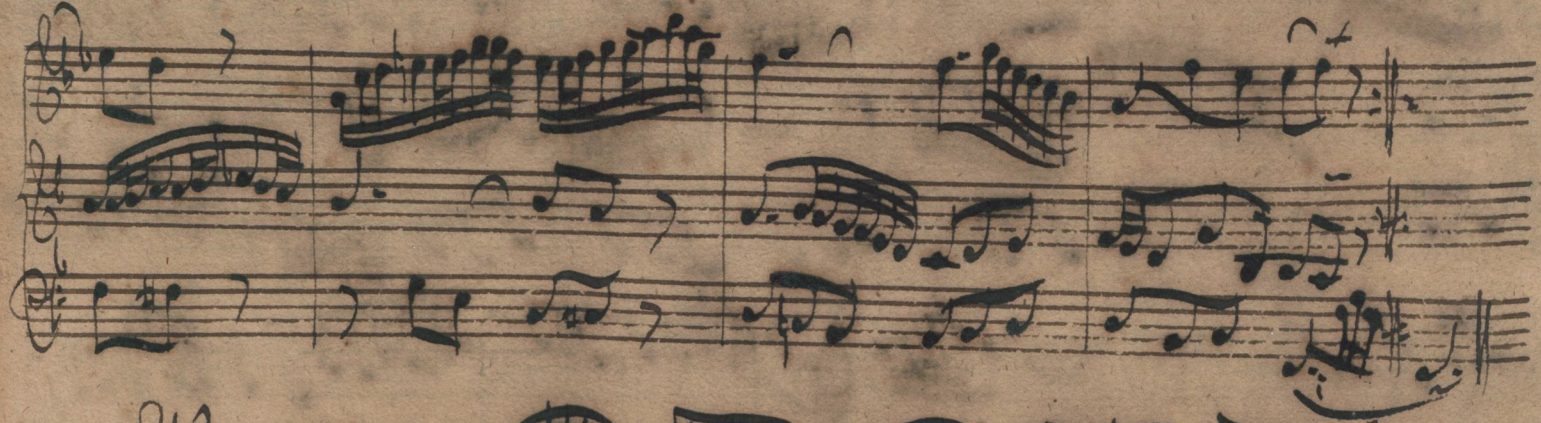
21a

Handwritten musical notation for measures 21-24. The notation continues on three staves, with some dynamic markings and phrasing slurs.

26



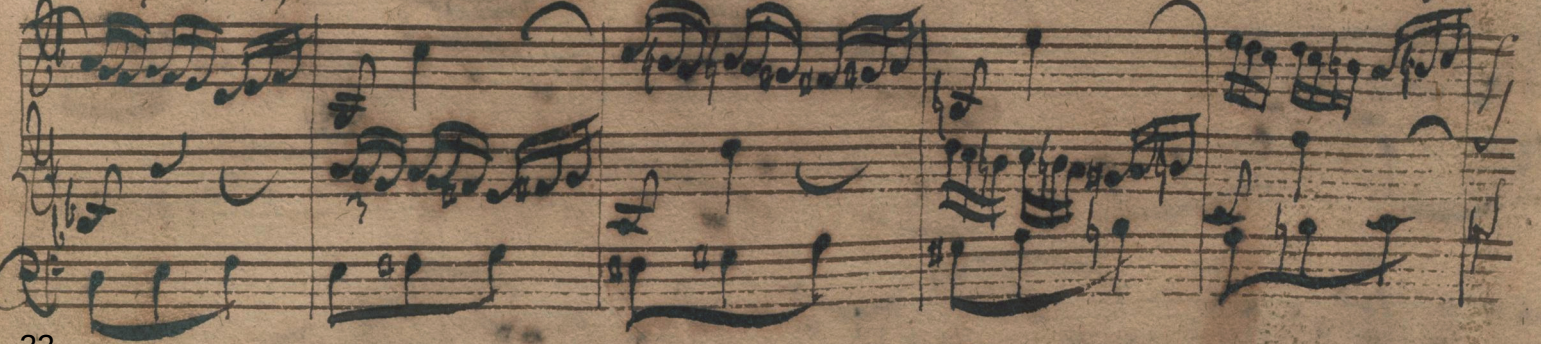
29a



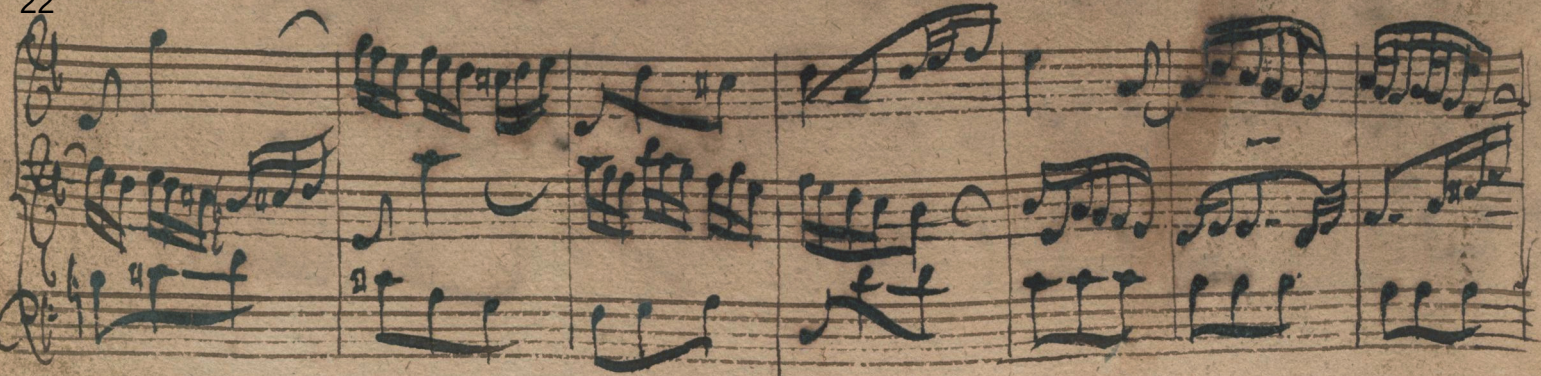
9



17



22



29

Handwritten musical notation for measures 29-37. The system consists of three staves. The top staff features a melodic line with various note values and rests. The middle and bottom staves provide harmonic accompaniment with rhythmic patterns.

38

Handwritten musical notation for measures 38-43. The system consists of three staves. The notation continues with similar melodic and harmonic structures as the previous system.

44

Handwritten musical notation for measures 44-48. The system consists of three staves. The melodic line in the top staff shows some variation in rhythm and pitch.

49a

Handwritten musical notation for measures 49-54. The system consists of three staves. The notation includes some complex rhythmic figures and rests.

55

Handwritten musical notation for measures 55-59. The system consists of three staves. The melodic line in the top staff features a prominent sequence of notes.

60a

Handwritten musical notation for measures 60-64. The system consists of three staves. The notation includes some complex rhythmic figures and rests.

68

Handwritten musical notation for measures 68-75. The system consists of three staves. The top staff features a treble clef and a key signature of one sharp (F#). The music includes a triplet of eighth notes in the first measure of the system. The notation is dense with various note values and rests.

76a

Handwritten musical notation for measures 76-81. The system consists of three staves. The notation continues with similar rhythmic patterns and note values as the previous system.

82

Handwritten musical notation for measures 82-86. The system consists of three staves. The notation shows a continuation of the musical piece with various rhythmic figures.

87

Handwritten musical notation for measures 87-92. The system consists of three staves. The notation includes a variety of note values and rests, maintaining the piece's rhythmic complexity.

93

Handwritten musical notation for measures 93-97. The system consists of three staves. The notation features a mix of rhythmic patterns and note values.

98

Handwritten musical notation for measures 98-103. The system consists of three staves. The notation concludes the page with various rhythmic and melodic elements.

105

Handwritten musical notation for measures 105-111. The system consists of three staves. The top staff features a complex melodic line with many sixteenth and thirty-second notes. The middle and bottom staves provide harmonic accompaniment with various rhythmic patterns.

112

Handwritten musical notation for measures 112-116. The system consists of three staves. The top staff continues the complex melodic line from the previous system. The accompaniment in the lower staves remains consistent in style.

117a

Handwritten musical notation for measures 117-122. The system consists of three staves. The top staff shows a more rhythmic and repetitive melodic pattern. The accompaniment continues with similar rhythmic motifs.

123

Handwritten musical notation for measures 123-128. The system consists of three staves. The top staff features a melodic line with frequent rests and dynamic markings. The accompaniment provides a steady harmonic base.

129

Handwritten musical notation for measures 129-134. The system consists of three staves. The top staff has a very active melodic line with many sixteenth notes. The accompaniment is more active than in previous systems.

135

Handwritten musical notation for measures 135-141. The system consists of three staves. The top staff continues with a complex melodic line. The accompaniment features some syncopated rhythms.

142

Handwritten musical notation for measures 142-148. The system consists of three staves. The top staff concludes with a final melodic phrase. The bottom staff ends with the handwritten text "Fine" and a double bar line.