

ORCHESTRA



MUSIC.

		Full Orche's	14 Instr.	9 Instr.	6 Instr.
LANCERS, <i>GIROFLE GIROFLA</i> , - -	GEO. WIEGAND	1 50	1 20	75	
LANCERS, <i>LA JOLIE PARFUMEUSE</i> ,	J. H. ROSS	1 50	1 20	75	
LANCERS, <i>EXCELSIOR</i> , - - - - -	R. SCHLEPEGRELL	1 50	1 20	75	60
QUADRILLE, <i>CENTENNIAL</i> , - - -	R. SCHLEPEGRELL	1 50	1 20	75	60
MARCH, <i>CHEER UP</i> , } POLKA, <i>SALAMANDER</i> , }	- - - - - CH. BACH	1 50	1 20	75	60
LANCERS, <i>FERDINAND</i> , - - - - -	R. SCHLEPEGRELL	1 50	1 20	75	60
QUADRILLE, <i>CONCORDIA</i> , - - - -	R. SCHLEPEGRELL	1 50	1 20	75	60
POLKA, <i>FRIEDENSFEIER</i> , } SCHOTTISCHE, <i>THE LOVERS</i> , }	- - G. MICHAELIS	1 50	1 20	75	60
LANCERS, <i>MINEOLA</i> , - - - - -	R. SCHLEPEGRELL	1 50	1 20	75	60
QUADRILLE, <i>ACADEMY</i> , - - - - -	R. SCHLEPEGRELL	1 50	1 20	75	60

New York.

J. H. Ross & Co. Music Publishers
383 Bowery.

QUADRILLE.
CENTENNIAL.

VIOLIN, 1st.

By R. Schlegel.
(Op. 51)

1



2



3



4



D.C.

D.C.

CODA. Svc

D.S.

VIOLIN, 1st:

4

Musical score for Violin 1, measures 4-8. The score is written in treble clef with a key signature of one flat and a 2/4 time signature. It features five staves of music. The first staff begins with a dynamic marking of *f*. The second staff includes a first ending bracket labeled "1. 2. 3. 4." and a *Fine* marking. The third staff has a dynamic marking of *mf*. The fourth staff has a dynamic marking of *p*. The fifth staff ends with a double bar line and the instruction "D.C." (Da Capo).

5

Musical score for Violin 1, measures 9-13. The score is written in treble clef with a key signature of one flat and a 2/4 time signature. It features five staves of music. The first staff begins with a dynamic marking of *p*. The second staff ends with a dynamic marking of *ff*. The third staff has a dynamic marking of *ff*. The fourth staff has a dynamic marking of *ff*. The fifth staff ends with a double bar line and the instruction "D.S." (Da Segno).

QUADRILLE.
CENTENNIAL.

VIOLIN, 2^d.

By R. Schlegel.
(Op. 51)

1

2

3

CODA.

D.S.

VIOLIN, 2^d.

4

2

1234

Fine

D.S.

5

p

D.S.

QUADRILLE.
CENTENNIAL.

VIOLA.

By R. Schlegel.
(Op. 51)

1

f

p

D.C.

2

f

3

p

f

CODA.

f

f

VIOLA.

4

1 2 3 4 Fine

f

f

f

f

D.C.

5

p

f

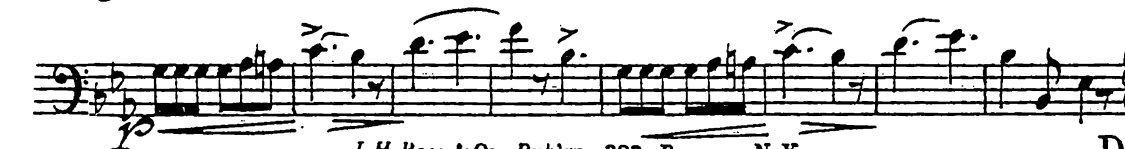
ff

D.S.

QUADRILLE.
CENTENNIAL.

CELLO.

By R. Schlegel.
(Op'51)



CELLO.

4

Musical score for Cello, measures 4-8. The score is written in bass clef with a key signature of one flat (B-flat) and a time signature of 2/4. Measure 4 begins with a forte (*f*) dynamic. Measures 5 and 6 contain a first ending marked "1. 2. 3. 4." and a "Fine" instruction. Measure 7 features a piano (*p*) dynamic, and measure 8 features a mezzo-forte (*mf*) dynamic. The piece concludes with a double bar line and the instruction "D.C." (Da Capo).

5

Musical score for Cello, measures 9-13. The score is written in bass clef with a key signature of one flat (B-flat) and a time signature of 6/8. Measure 9 begins with a piano (*p*) dynamic. Measure 10 features a piano (*p*) dynamic. Measure 11 features a forte (*f*) dynamic. Measure 12 features a fortissimo (*ff*) dynamic. Measure 13 concludes with a double bar line and the instruction "D.S." (Da Segno).

QUADRILLE.
CENTENNIAL.

BASSO.

By R. Schlegel.
(Op'51)

1

f

p

f

p

D.C.

2

f

p

p

p

D.C.

3

p

f

CODA.

f

p

D.S.

BASSO.

4

4

f

1 2 3 4. *Fine*

f

1 *p*

D.C.

5

5

2 *p*

f

ff

D.S.

QUADRILLE.
CENTENNIAL.

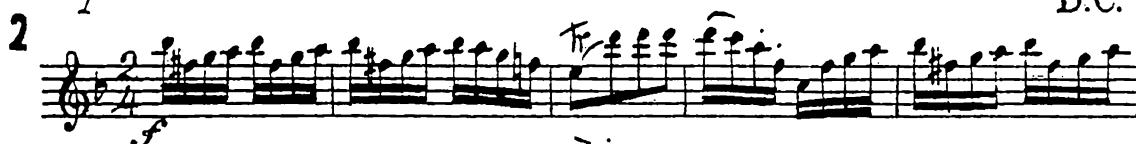
PICCOLO.

By R. Schlegel.
(Op. 51)

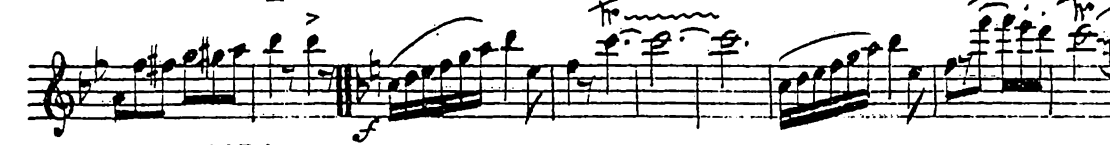

1



2



3



PICCOLO.

4

f *Fine* *p* 1 3 *f* *D.C.*

5

p *f* *ff* *p* *p* *p* *D.S.*

QUADRILLE.
CENTENNIAL.

FLUTE. 2^d

By R. Schlegel.
(Op. 51)

1

2

3

D.C.

D.S.

FLUTE. 2^a

4



f

1. 2. 3. 4.

Fine

mf

D.C.

5



p

ff

D.S.

QUADRILLE.
CENTENNIAL.

CLARINET. 1st C.

By R. Schlegel.
(Op. 51)

1

f *p* *f* *p*

D.C.

2

f *p* *f* *p*

1st & 3d
mf

2d & 4th 16.

D.C.

3

f *mf*

CODA.

Clar 2d

f *p*

D.S.

CLARINET. 1st C.

4

1 2 3 4 Fine

f *p* *f* *p* *f*

D.C.

5

p *ff* *f* *f* *p*

QUADRILLE.
CENTENNIAL.

CLARINET. B.

By R. Schlegel.
(Op. 51)

1

2

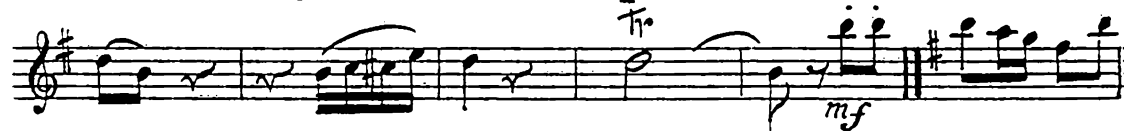
3

CODA.

D.S.

CLARINET. B.

4



5



D.S.

QUADRILLE.
CENTENNIAL.

OBOE.

By R. Schlegel.
(Op. 51).

1

f

2

f

D.C.

2

f

1st & 3d

p

1

4

D.C.

2d & 4th

16

D.C.

3

p

1

f

p

CODA.

2

p

D.S.

OBOE.

4

f

1. 2. 3. 4.

Fine

mf

pp

tr

mf

D.C.

5

2

f

3

ff

tr

2

tr

D.S.

QUADRILLE.
CENTENNIAL.

BASSOON.

By R. Schlegel.
(Op. 51)

1



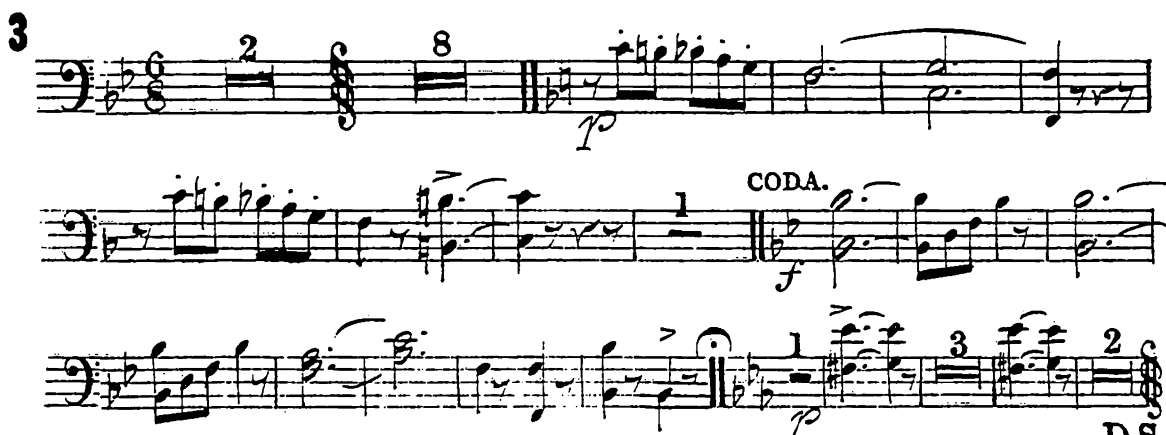
D.C.

2



D.C.

3



CODA.

D.S.

BASSOON.

4

f

1. 2. 3. 4.

Fine

8

4

2

D.C.

5

p

4

ff

D.S.

QUADRILLE.
CENTENNIAL.

CORNET. 1st B.

By R. Schlegel.
(Op. 31)

1

f *Fine*

2^d Cornet.

p *D.C.*

2

f *D.C.*

Horns.

p *D.C.*

Horns.

p *D.C.*

3

p *CODA.*

p *Fine*

p *D.S.*

CORNET. 1st B.

4

Musical score for Corнет 1st B, measures 4-8. The score is written in treble clef with a key signature of one sharp (F#) and a 2/4 time signature. It consists of five staves of music. The first staff begins with a dynamic marking of *f*. The second staff includes a first ending bracket labeled '1 2 3 4' and a 'Fine' marking. The third staff ends with a dynamic marking of *f*. The fourth staff begins with a first ending bracket labeled '1' and ends with a dynamic marking of *f*. The fifth staff ends with a dynamic marking of *f*.

D.C.

5

Musical score for Corнет 1st B, measures 9-13. The score is written in treble clef with a key signature of one sharp (F#) and a 2/4 time signature. It consists of five staves of music. The first staff begins with a dynamic marking of *p* and contains a measure with a whole rest. The second staff begins with a dynamic marking of *f*. The third staff ends with a dynamic marking of *ff*. The fourth and fifth staves contain trills, indicated by the 'tr' symbol above the notes.

D.S.

QUADRILLE.
CENTENNIAL.

CORNET. 2^d B.

By R. Schlegel.

1



f

p

f

p

D.C.

2



f

p

3

D.C.

3

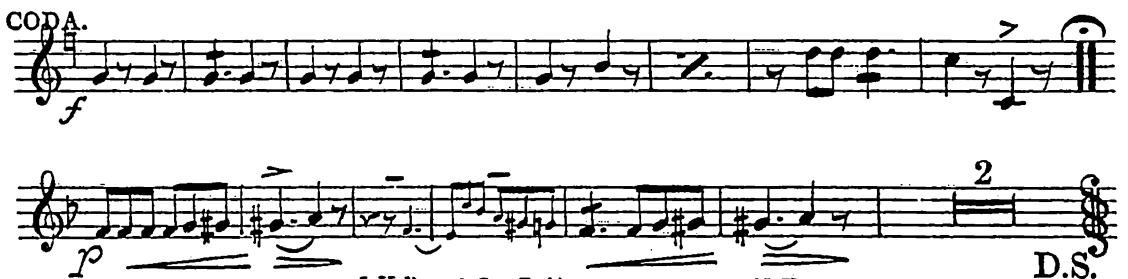


p

2

8

CODA.



f

p

2

D.S.

CORNET. 2^d B.

4



f

12.3.4. *Fine* 8 *mf* 2

D.C.

5



f

2 7

ff *tr* *tr* *tr*

1 *>*

D.S.

QUADRILLE.
CENTENNIAL.

HORNS. F

By R. Schleppegrell.
(Op'51)

1

f *p* *f* *p* D.C.

2

f *p* *p* D.C.

3

p *p* *p* *p* CODA. D.S.

HORNS. F

4

f

1. 2. 3. 4.

Fine >

2

2

D.C.

5

p

2

2

ff

2

D.S.

QUADRILLE.
CENTENNIAL.

TROMBONE.

By R. Schlegel.
(Op. 51)

1

2

3

CODA.

TROMBONE.

4

f 2

1 2 3 4 *Fine* 8

1 4

p D.C.

5

2 4

Bassoon. *f*

ff

QUADRILLE.
CENTENNIAL.

DRUMS.

By R. Schlegel.
(Op'51)

1

2

3

CODA.

Triangle.

DRUMS.

4

Two staves of musical notation in bass clef, 2/4 time. The first staff begins with a dynamic marking of *f*. The second staff includes first and second endings, with a *Fine* marking and a repeat sign.

Triangle.

Staff of musical notation in bass clef, 2/4 time, with a dynamic marking of *mf*. The notation consists of a series of eighth notes.

Staff of musical notation in bass clef, 2/4 time. It features first and second endings, a dynamic marking of *p*, and the instruction *D.C.* at the end.

5

Triangle.

Six staves of musical notation in bass clef, 6/8 time. The first staff includes a dynamic marking of *p* and a *Triangle.* instruction. The notation includes various rhythmic patterns, first and second endings, and dynamic markings of *f* and *ff*. The piece concludes with the instruction *D.S.*



Orchestra Music.

OVERTURES,

SELECTIONS, AND DANCES.

LARGE ORCHESTRA.
18 INSTRUMENTS.



SMALL ORCHESTRA.
9 INSTRUMENTS.

		LARGE ORCH ^{LA} .	SMALL ORCH ^{MA} .
1. QUADRILLE, "Shoo Fly,"	J. H. Ross.		
2. { GALOP, "Le Petit Faust,"	"	1 50	75
3. { POLKA REDOWA, "Wild Bird,"	"		
4. WALTZES, "Le Petit Faust,"	"		
5. { MAZURKA, (Trois Temps), "Le Petit Faust,"	"	1 50	75
6. { SCHOTTISCHE, "Nilsson,"	"		
7. LANCERS, "Le Petit Faust,"	"		
8. REELS AND JIGS, (eight),	"		
9. QUADRILLE, "Social Medley,"	"		
10. { SCHOTTISCHE, "Hans Sörgel," (op: 103),	G. Weingarten.	1 50	75
11. { GALOP, "With Full Sail," (op: 128),	"		
12. LANCERS, "Grand Duke,"	J. H. Ross.		
13. POLKA, "Sea View,"	"		
14. { MARCH, "Duchesne Greys,"	"		
15. QUADRILLE, "Autumn Blossoms," (op: 116),	- Chr. Fröhde.		
16. { GALOP, "Clear the Road," (op: 139.)	G. Weingarten.	1 50	75
17. { VARSOVIENNE, 7th, (op: 124),	"	1 50	75
18. LANCERS, 23d, "Manhattan," (op: 135),	"	1 50	75
19. { MARCH, "Odeon," (op: 137),	"	1 50	75
20. { SCHOTTISCHE, "Evergreen," (op: 141),	"	1 50	75
21. QUADRILLE, "Hand-in-hand," (op: 138),	"	1 50	75
22. POLKA, "Metropolitan," <small>Polka de Concert, Solo for Cornet.</small>	"	1 50	75
23. QUADRILLE, "Masen Bilder," (Carnival Scenes),	J. Freising.	1 50	75
24. WALTZES, "Empire City," (Kaiserstadt), (op: 416),	Franz Abt.	1 50	75
25. { GALOP, "Kugel u. Kugel," (op: 81),	Fr. Zikoff.	1 50	75
26. { WALLY POLKA, (op: 84),	"	1 50	75
27. WAPPENFEST QUADRILLE, (op: 71),	H. Hermann.	1 50	75
Do. for 14 instruments,		1 20	
28. { BOSTON MARCH, (op: 61),	Ch. Bach.	1 50	75
29. { AMAZON MARCH, (op: 62).	"	1 20	
Do. for 14 instruments		1 50	75
30. QUADRILLE, "Fleurs Animées," (op: 88),	Fr. Zikoff.	1 20	
Do. for 14 instruments,		1 50	75
31. { CLÄRCHEN POLKA, (op: 152),	A. Parlow.	2 63	1 50
32. { WALTZES, "Frühling auf der Reise," (The Approach of Spring,) (op: 91),	Fr. Zikoff		1 13
Do. for 6 instruments,	"	1 88	
Do. for 12 instruments,	"	2 25	
Do. for 15 instruments,	"	1 35	90
33. CONCERT POLKA, "Council Bluffs," for Cornet solo, (op: 57)	Ch. Bach.	1 50	75
34. MELANIE QUADRILLE, (op: 92),	Fr. Zikoff.	1 20	
Do. for 14 instruments,		1 50	75
35. LA BELLA DONNA LANCERS, (op: 64),	Ch. Bach.	1 20	
Do. for 14 instruments,		1 50	75
36. QUADRILLE, "Songs of the day," (medley),	J. H. Ross.	1 20	
Do. for 14 instruments,		1 50	75
37. QUADRILLE, "La Fille de Madame Angot,"	J. H. Ross.	1 50	75
Do. for 14 instruments,		1 20	

Published by

J. H. ROSS & CO.,
383 BOWERY, New York.