

Violoncello

Symphony No. 3

Allegro pesante con moto

for two violins, viola, cello and bass

con espressione by Jeffrey Harrington

10 = 220 3

p

7 *mp*

10 *mf*

13

16

19 *f*

22 *ff* *maestoso*

25

28 *f* *poco rit.*

32 = 220 (a tempo)

35

Detailed description: This is a page of a musical score for the Violoncello part of Symphony No. 3. The score is written in bass clef with a key signature of one flat (B-flat) and a time signature of 10/8. It begins with a tempo marking of 'Allegro pesante con moto' and a metronome marking of 10 = 220. The music features a complex rhythmic pattern with many triplets and slurs. Dynamics range from piano (*p*) to fortissimo (*ff*). The score includes performance instructions such as 'con espressione' and 'maestoso'. There is a 'poco rit.' (slight ritardando) starting at measure 28. The score ends at measure 35 with a key signature change to two sharps (D major).

p *mp*

mf

p

mf

p *p*

f *poco rit.* *ff*

ff *pp* *ff*

pp *ff*

♩ = 150
maestoso

Detailed description: This is a page of a cello score, measures 38 to 77. The music is written in bass clef with a key signature of two sharps (F# and C#). The piece begins with a piano (*p*) dynamic and gradually increases to mezzo-piano (*mp*) and mezzo-forte (*mf*). The texture is primarily composed of sixteenth-note patterns, often beamed in groups of three. There are several dynamic markings: *p* at measures 43, 49, 58, and 60; *mp* at measure 38; *mf* at measures 46, 52, and 55; *f* at measure 69; and *ff* at measures 69, 73, and 77. A *poco rit.* (slight ritardando) is indicated at measure 69. The tempo is marked *♩ = 150* and *maestoso* (moderato) starting at measure 73. The score includes various articulations such as slurs, accents, and breath marks (marked with 'x'). The key signature changes to two flats (Bb and Eb) at measure 58 and remains there until the end of the page. The piece concludes with a final *ff* dynamic and a triplet of sixteenth notes.

Violoncello poco accel.

80 *mp*

82 *mf* **♩=220 (a tempo)** *con moto* *mf*

86 *f* *mf*

90 *p*

93 *ff*

96

99

102

104 **2**

108 *mf*

112 *mp* *p*

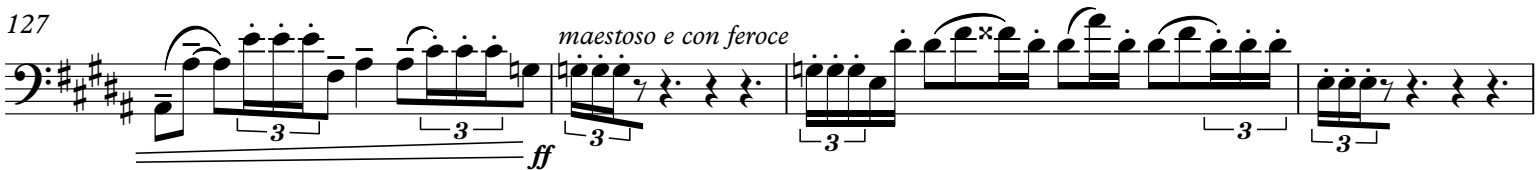
117

120

123



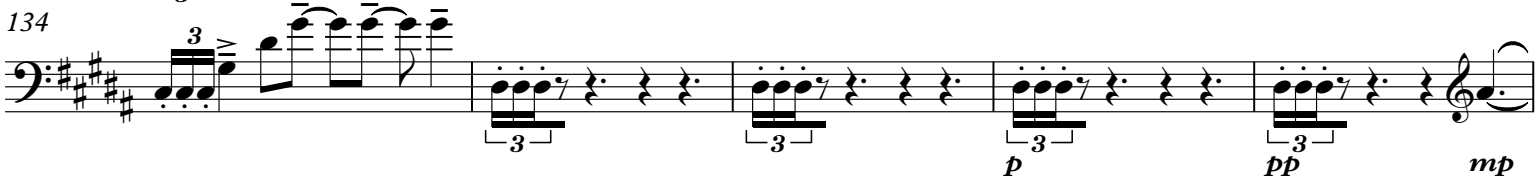
127



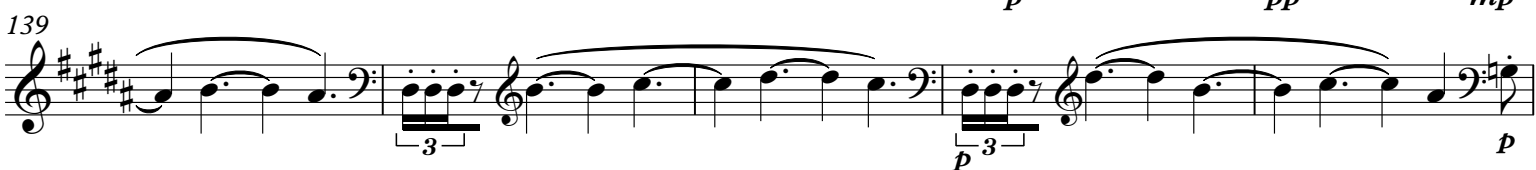
131



134



139



144



146



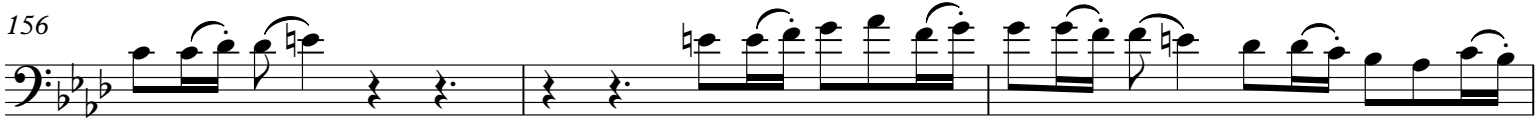
148



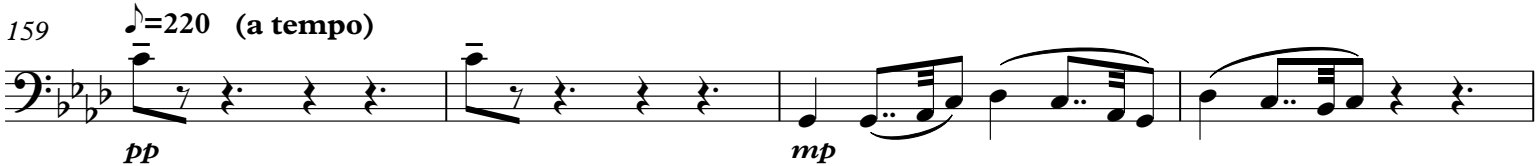
153



156



159



163



167



169



171



173



176



180



183 mp



186



189



192



195



198



201



204



207



210



213



216

