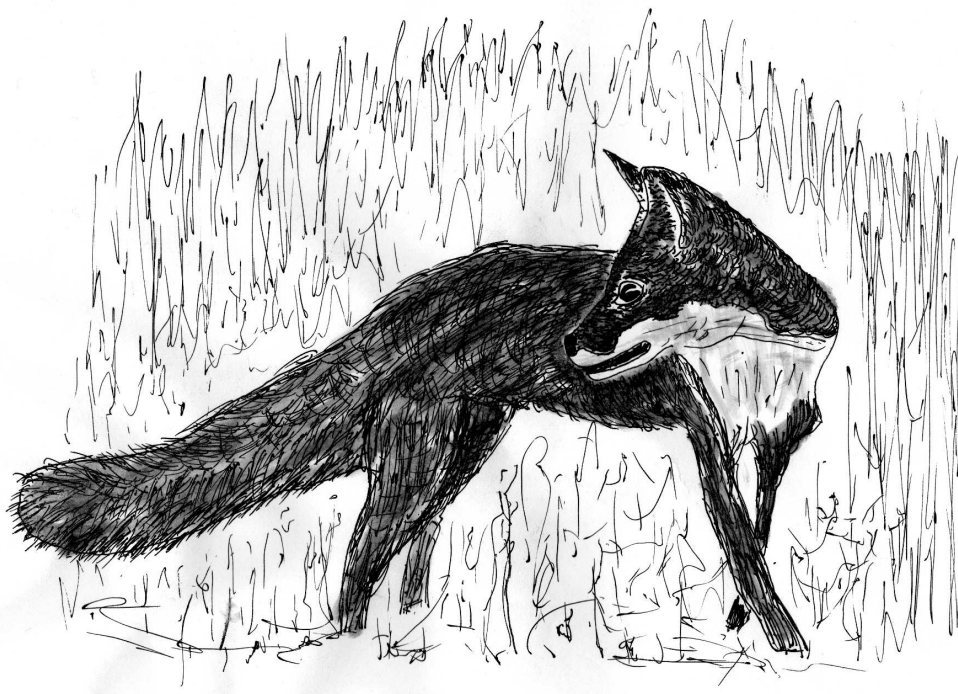


Full Score

# The Fox



A Movement from  
"The International Carnival of the Animals"

Peter Dyson  
2004

The Fox:  
Programme note.

Fox hunting is a controversial pastime in Britain and still conjures up in peoples' minds a picture of the upper classes having a jolly time riding around the countryside in their red coats, chasing the sly and cunning fox.

This traditional picture of Britain has almost disappeared as more and more landowners have banned this cruel and barbaric way of "controlling" the size of the fox population from taking place on their land. Indeed it is probably true to say that more foxes live in towns than in the countryside now, scavenging off the rubbish that lies in and around the towns and cities.

As my contribution to this "International Carnival of the Animals" I have painted a simple picture of the English fox. After the "Once upon a time" beginning to this story, he is seen loping around the countryside. He stops and listens when he hears the distance calls of the hunt. He hides. The hunt begins and the "Lords and Ladies" gallop across the open fields following the hounds. Suddenly the fox is discovered and the chase is on in earnest. As he tires, the hounds close in and leap upon him. End of story? Or does his spirit live on lurking round the empty countryside. Our story concludes with "Once upon a time" again. Yes, once there were foxes and fox hunting took place in the English countryside. The echoes of galloping horses are heard as they ride into folk-lore history.

# The Fox

3  
Peter Dyson

**Allegro non troppo** (♩ = 120)

Flute

Clarinet in Bb

Snare Drum

Tambourine

Piano 1

Piano 2

**Allegro non troppo** (♩ = 120)

Violin I

Violin II

Viola

Violoncello

Double bass



6

Fl.

Cl.

S. D.

Tamb.

Pno 1

Pno 2

Vln I

Vln II

Vla

Vc.

Db.

*mf*

*f*

*ff*



17

Fl.

Cl.

S. D.

Tamb.

Pno 1

Pno 2

Vln I

Vln II

Vla

Vc.

Db.

*mf*

*f*

*p*

22

Fl.

Cl.

S. D.

Tamb.

Pno 1

Pno 2

Vln I

Vln II

Vla

Vc.

Db.

*mf*

*mf*

*p*

*mf*

27

Fl.

Cl.

S. D.

Tamb.

Pno 1

Pno 2

Vln I

Vln II

Vla

Vc.

Db.

*p*

8

Detailed description: This page of a musical score covers measures 27 through 31. The instruments are arranged in a standard orchestral layout. The Flute (Fl.) and Clarinet (Cl.) parts are in the upper woodwinds. The Percussion (S. D. and Tamb.) parts are in the middle. The Piano (Pno 1 and Pno 2) parts are in the lower middle. The Violin I (Vln I) and Violin II (Vln II) parts are in the lower strings. The Viola (Vla), Violoncello (Vc.), and Double Bass (Db.) parts are in the bottom. The Clarinet part is the most active, featuring a melodic line with eighth and sixteenth notes, including slurs and ties. The Violin I part starts with a piano (*p*) dynamic and features a melodic line with slurs. The Viola, Violoncello, and Double Bass parts provide harmonic support with sustained notes and slurs. The Flute, Percussion, and Piano parts are mostly silent, indicated by rests.



32

Fl.

Cl.

S. D.

Tamb.

Pno 1

Pno 2

Vln I

Vln II

Vla

Vc.

Db.

*p*

*mf*

*pp*

*pp*

*pp*

*pp*

*pp*

*pp*

38

Fl.

Cl.

S. D.

Tamb.

Pno 1

Pno 2

Vln I

Vln II

Vla

Vc.

Db.

*mf*

*p*

*p*

*p*

*p*

42

Fl.

Cl.

S. D.  
*pp*

Tamb.

Pno 1

Pno 2  
*p*

Vln I

Vln II

Vla

Vc.

Db.  
*p*

Detailed description: This page of a musical score covers measures 42, 43, and 44 in a 4/4 time signature. The instruments and their parts are: Flute (Fl.) and Clarinet (Cl.) are silent, indicated by whole rests. Snare Drum (S. D.) plays a continuous eighth-note pattern starting at measure 42, marked *pp*. Tambourine (Tamb.) is silent. Piano 1 (Pno 1) and Piano 2 (Pno 2) play a melodic line starting in measure 43, marked *p*. Violin I (Vln I) and Violin II (Vln II) are silent. Viola (Vla) and Violoncello (Vc.) are silent. Double Bass (Db.) plays a melodic line starting in measure 42, marked *p*. The score includes various musical notations such as rests, eighth notes, sixteenth notes, and dynamic markings.

45

Fl.

Cl.

S. D.

Tamb.

Pno 1

*crescendo poco a poco*

*pp*

Pno 2

*crescendo poco a poco*

*pp*

Vln I

Vln II

Vla

*p* *crescendo poco a poco*

Vc.

*p* *crescendo poco a poco*

Db.

*crescendo poco a poco*

47

Fl.

Cl.

S. D.

Tamb.

Pno 1

Pno 2

Vln I

Vln II

Vla

Vc.

Db.

Detailed description: This is a page of a musical score, page 47, numbered 13 in the top right corner. The score is for a full orchestra and includes parts for Flute (Fl.), Clarinet (Cl.), Snare Drum (S. D.), Tambourine (Tamb.), Piano 1 (Pno 1), Piano 2 (Pno 2), Violin I (Vln I), Violin II (Vln II), Viola (Vla), Violoncello (Vc.), and Double Bass (Db.). The Flute and Clarinet parts are mostly silent, indicated by rests. The Snare Drum and Tambourine parts have rests with vertical bar lines. Piano 1 has a bass line starting with a sharp sign (#) and a flat sign (b). Piano 2 has a bass line starting with a sharp sign (#). Violin I and Violin II are silent. The Viola and Violoncello parts feature a rhythmic pattern of eighth notes with triplets (indicated by a '3' over the notes). The Double Bass part has a bass line starting with a sharp sign (#) and a flat sign (b).

49

Fl.

Cl.

S. D.

Tamb.

Pno 1

Pno 2

Vln I

Vln II

Vla

Vc.

Db.

51

Fl.

Cl.

S. D.

Tamb.

Pno 1

Pno 2

Vln I

Vln II

Vla

Vc.

Db.

Detailed description: This page of a musical score, numbered 51, contains ten staves. The top four staves are for Flute (Fl.), Clarinet (Cl.), Snare Drum (S. D.), and Tambourine (Tamb.), each with a single bar rest. The fifth staff is for Piano 1 (Pno 1), showing a melodic line in the bass clef with a slur over two notes. The sixth staff is for Piano 2 (Pno 2), with a single note in the bass clef. The seventh and eighth staves are for Violin I (Vln I) and Violin II (Vln II), both playing eighth-note triplets. The ninth staff is for Viola (Vla), playing eighth-note triplets. The tenth staff is for Cello (Vc.), also playing eighth-note triplets. The eleventh staff is for Double Bass (Db.), with a single note in the bass clef. The score is divided into two measures by a vertical bar line.





55

Fl.

Cl.

S. D.

Tamb.

Pno 1

*crescendo poco a poco*

Pno 2

*crescendo poco a poco*

Vln I

*crescendo poco a poco*

Vln II

*crescendo poco a poco*

Vla

*crescendo poco a poco*

Vc.

*crescendo poco a poco*

Db.

*crescendo poco a poco*

57

Fl.

Cl.

S. D.

Tamb.

Pno 1

Pno 2

Vln I

Vln II

Vla

Vc.

Db.

Detailed description: This page of a musical score covers measures 57 and 58. The score is arranged for a full orchestra and includes percussion. The Flute (Fl.) and Clarinet (Cl.) parts are silent, indicated by whole rests. The Snare Drum (S. D.) and Tambourine (Tamb.) parts play a rhythmic pattern of eighth-note triplets. The Piano 1 (Pno 1) part features a melodic line in the right hand with eighth-note triplets and a sustained chord in the left hand. The Piano 2 (Pno 2) part plays a complex texture with eighth-note triplets in the right hand and chords in the left hand. The Violin I (Vln I) and Violin II (Vln II) parts play melodic lines with slurs. The Viola (Vla) and Violoncello (Vc.) parts play eighth-note triplets. The Double Bass (Db.) part plays a simple bass line with quarter notes and rests.

59

Fl.

Cl.

S. D.

Tamb.

Pno 1

Pno 2

Vln I

Vln II

Vla

Vc.

Db.

Detailed description: This page of a musical score covers measures 59 and 60. The score is for a full orchestra and includes parts for Flute (Fl.), Clarinet (Cl.), Snare Drum (S. D.), Tambourine (Tamb.), Piano 1 (Pno 1), Piano 2 (Pno 2), Violin I (Vln I), Violin II (Vln II), Viola (Vla), Violoncello (Vc.), and Double Bass (Db.). Measures 59 and 60 are marked with a '59' at the beginning. The Flute and Clarinet parts are mostly rests. The Snare Drum and Tambourine parts feature rhythmic patterns with triplets. The Piano 1 part has a complex texture with triplets in the right hand and sustained chords in the left hand. The Piano 2 part has a similar texture with triplets in the right hand and sustained chords in the left hand. The Violin I and Violin II parts have melodic lines with some triplets. The Viola and Violoncello parts have rhythmic patterns with triplets. The Double Bass part has a simple bass line with a triplet in the first measure.

61

Fl.

Cl.

S. D.

Tamb.

Pno 1

Pno 2

Vln I

Vln II

Vla

Vc.

Db.

*ff*

*f*

*f*

*f*

This page of a musical score, numbered 20, begins at measure 61. The instrumentation includes Flute (Fl.), Clarinet (Cl.), Snare Drum (S. D.), Tambourine (Tamb.), two Pianos (Pno 1 and Pno 2), Violin I (Vln I), Violin II (Vln II), Viola (Vla), Violoncello (Vc.), and Double Bass (Db.). The score is written in 2/4 time. In measure 61, the Clarinet and Pianos play triplets of eighth notes, while the Tambourine and Snare Drum have specific rhythmic patterns. The Violins and Viola play eighth notes. In measure 62, the music becomes more complex with accents and dynamic changes. The Clarinet has a melodic line with accents and dynamic markings. The Pianos and Viola continue with triplets, and the Violins play a melodic line. The Viola and Violoncello parts feature a consistent triplet eighth-note pattern. Dynamic markings include fortissimo (ff) and forte (f). The page ends with a fermata over the final notes.

63

Fl.

Cl.

S. D.

Tamb.

Pno 1

Pno 2

Vln I

Vln II

Vla

Vc.

Db.

*ff*

*ff*

*ff*

*ff*

*ff*

*ff*

65

Fl.

Cl.

S. D.

Tamb.

Pno 1

Pno 2

Vln I

Vln II

Vla

Vc.

Db.

*mf*

*ff*

3

*f*

65

67

Fl.

Cl.

S. D.

Tamb.

Pno 1

Pno 2

Vln I

Vln II

Vla

Vc.

Db.

*f*

*f*

*f*

*f*

*f*

*f*

69

Fl.

Cl.

S. D.

Tamb.

Pno 1

Pno 2

Vln I

Vln II

Vla

Vc.

Db.

*ff*

*f*

*f*

*f*



71

Fl.

Cl.

S. D.

Tamb.

Pno 1

Pno 2

Vln I

Vln II

Vla

Vc.

Db.

*mf*

Detailed description: This page of a musical score covers measures 71 and 72. The instrumentation includes Flute (Fl.), Clarinet (Cl.), Snare Drum (S. D.), Tambourine (Tamb.), Piano 1 (Pno 1), Piano 2 (Pno 2), Violin I (Vln I), Violin II (Vln II), Viola (Vla), Violoncello (Vc.), and Double Bass (Db.). The score is written in treble clef with a key signature of one sharp (F#). The Flute part has rests in both measures. The Clarinet part has a melodic line starting in measure 71, with a slur over the first two measures and a fermata in measure 72. The Snare Drum and Tambourine parts have rests in measure 71 and rhythmic patterns in measure 72, with the Tambourine playing a triplet of eighth notes. The Piano 1 part has a melodic line in measure 71, marked *mf*, with a slur and a fermata in measure 72. The Piano 2 part has a melodic line in measure 71, with a slur and a fermata in measure 72. The Violin I, Violin II, and Viola parts all play a rhythmic pattern of eighth notes with slurs and triplet markings. The Violoncello and Double Bass parts have rests in measure 71 and play a single note in measure 72.





77

Fl.

Cl.

S. D.

Tamb.

Pno 1

Pno 2

Vln I

Vln II

Vla

Vc.

Db.

Detailed description: This page of a musical score covers measures 77 and 78. The Flute (Fl.) part is mostly silent, with rests in both measures. The Clarinet (Cl.) part features a rhythmic melody of eighth notes with accents and various accidentals (flats and a sharp). The Snare Drum (S. D.) and Tambourine (Tamb.) parts provide a steady accompaniment with specific rhythmic patterns. The Piano 1 (Pno 1) and Piano 2 (Pno 2) parts play sustained chords with long ties, including a tritone (F# and C) in the right hand and a major triad (F, A, C) in the left hand. The Violin I (Vln I) and Violin II (Vln II) parts play eighth-note triplets. The Viola (Vla) part also plays eighth-note triplets. The Violoncello (Vc.) and Double Bass (Db.) parts play sustained notes, with the Double Bass part including a sub-octave '8va' marking.











89

Fl.

Cl.

S. D.

*mf*

Tamb.

Pno 1

Pno 2

Vln I

*p*

Vln II

*p*

Vla

*p*

Vc.

*p*

Db.

*p*

93

Fl.

Cl.

S. D.

Tamb.

Pno 1

Pno 2

Vln I

Vln II

Vla

Vc.

Db.

*mf*

*mf*

*mf*

*mf*

*mf*

*p*

98

Fl.

Cl.

S. D.

Tamb.

Pno 1

Pno 2

Vln I

Vln II

Vla

Vc.

Db.

*p*

*pp*

*pp*



110

Fl.

Cl.

S. D.

Tamb.

Pno 1

Pno 2

Vln I

Vln II

Vla

Vc.

Db.

*mf*

*p*

*pp*

*p*

115

Fl.

Cl.

S. D.

Tamb.

Pno 1

Pno 2

Vln I

Vln II

Vla

Vc.

Db.

*mf*

*p*

*pp*

*pp*

*ppp*

*pp*

*ppp*

*pp*

*ppp*

*pp*

*ppp*

*pp*

*ppp*

121

Fl.

Cl.

S. D.

Tamb.

Pno 1

Pno 2

Vln I

Vln II

Vla

Vc.

Db.

*ppp*

124

Fl.

Cl.

S. D.

Tamb.

Pno 1

Pno 2

Vln I

Vln II

Vla

Vc.

Db.

*ppp*

*ppp*

*ppp*

*ppp*

*ppp*

*ppp*

*p*