

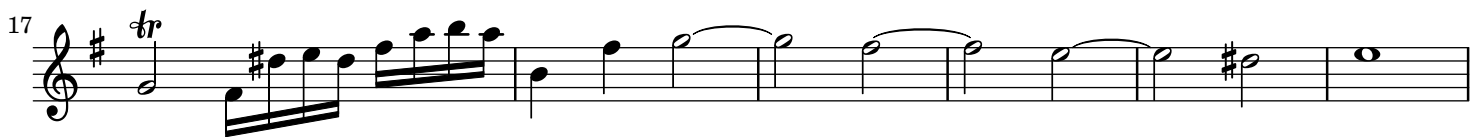
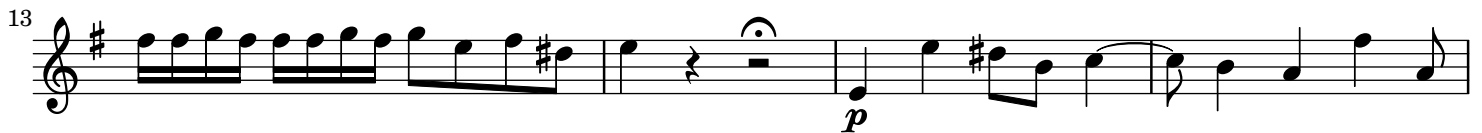
# "Alma oppressa da sorte crudele"

La Fida Ninfa, RV.714, I/9

Violon I

Antonio VIVALDI

(1678-1741)



36

40

45

49

52

58

61

66

70

74

77

*f*

*p*

*Fine*

*D.C. al Fine*

Detailed description: This page contains the musical score for the first violin part, measures 36 through 77. The music is in G major (one sharp) and 3/4 time. It features a variety of rhythmic patterns, including eighth and sixteenth notes, and rests. Dynamic markings include *f* (forte) at measure 49 and *p* (piano) at measure 52. The score concludes with a double bar line and the instruction *D.C. al Fine* at measure 77.