

17
17
B. 64

A Octave Maus.

Sonate.

Violon.

BRUXELLES

1^{re} Partie.

671146

V. Buffin.

Assez animé I.

Musical score for the first section, 'Assez animé I.' It consists of five staves of music in G major and 3/4 time. The piece begins with a forte (f) dynamic and features a continuous stream of eighth-note triplets. The tempo is marked 'Assez animé I.'.

cédez - *Plus lent et très doux.*

Musical score for the second section, 'Plus lent et très doux.' It consists of two staves of music. The first staff begins with a forte (f) dynamic and a triplet, followed by a measure with a fermata. The second staff begins with a piano (p) dynamic and continues with a triplet. The tempo is marked 'Plus lent et très doux.'.

pressez peu à peu le mouvement

Musical score for the third section, 'Assez lent.' It consists of two staves of music. The first staff begins with a forte (f) dynamic and a triplet, followed by a measure with a fermata. The second staff begins with a fortissimo (ff) dynamic and continues with a triplet. The tempo is marked 'Assez lent.'.

Assez lent.

Modérément animé II.

Musical score for the fourth section, 'Modérément animé II.' It consists of one staff of music. The piece begins with a piano (p) dynamic and a triplet. The tempo is marked 'Modérément animé II.'.

un peu plus vite

p

f

p

ralentir - - assez lent

Au mouvement II.

mf

p

f

p

p

pp

presses le mouvement

p

f

ff

Très animé.

f

ff

f

ff

f

Au mouvement I.

f

mf

cédez

Au mouvement.

f

pp

Violon.

mf

Même mouvement.

p

pressez un peu le mouvement

mf

f

mf

f

ff

Au mouvement I.

f

mf

f

mf

mf

p

Plus lent.

assez lent Très animé.

Violon.

Au mouvement II.

Musical score for the first part of the piece, 'Au mouvement II.' It consists of five staves of music in G major. The first staff begins with a piano (*p*) dynamic and includes a mezzo-forte (*mf*) section. The second and third staves continue with various dynamics including *mf* and forte (*f*). The fourth staff features a section marked 'Au mouvement II. sans lenteur' with a mezzo-forte (*mf*) dynamic. The fifth staff concludes with a pianissimo (*pp*) dynamic.

2^{me} Partie.

Musical score for the second part of the piece, '2^{me} Partie.' It begins with the tempo marking 'Lent.' and a 4/4 time signature. The first staff is marked 'plaintif' and starts with a piano (*p*) dynamic. The second staff features a piano (*p*) dynamic followed by a forte (*f*) section. The third staff starts with fortissimo (*ff*) and includes a forte (*f*) section. The fourth and fifth staves continue with dynamics of piano (*p*) and mezzo-forte (*mf*). The sixth staff begins with a piano (*p*) dynamic and includes a section marked 'Plus lent.' with a first ending bracket. The piece concludes with the instruction 'mettez la sourdine' (mute) and a final dynamic of pianissimo (*pp*).

Au mouvement.
avec sourdine

p simplement

Au mouvement.

f p *en retenant* 8 *ôtez la sourdine*

sans sourdine

p

f

f

Au mouvement.

ff *ff* *f*

Au mouvement.

p avec émotion

mf

mf *presses un peu* *f* *f* *sfz*

p *ralentir peu à peu*

Au mouvement.

p *p* *en retenant*

Au mouvement.

pp *pp* *en retenant*

3^{me} Partie.

Animé. ⁵
mf

f

sans presser
mf *f*

Au mouvement. ²
p

mf *cedez un peu* *mf*

f ¹ ⁵ **Vite.**

Au mouvement I. **Vite.** ³ ⁶ **Au mouvement I un peu accéléré. ral.** ²/₄

f *f*

Mouvement II plus lent. ³
p

pressez le mouvement
f

¹ **Au mouvement I.**
mf

mf

pressez peu à peu le mouvement



Très animé

f

ralent. peu à peu

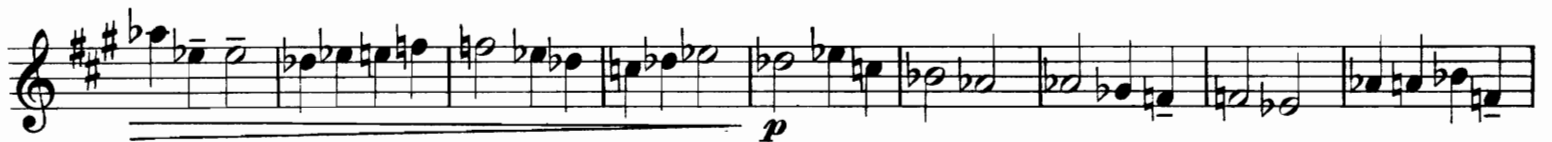
Au mouvement II.



pressez le mouvement



en diminuant - - - toujours en dimin.



Assez lent. 3 Au mouvement I.



Vite.

pressez le mouvement



ralentir

Au mouvement I.



Au mouvement I.

Un peu plus large.

Vite.

249