

Serbian Quartet.

J. R. Heath.

VIOLONCELLO.

LONDON :

J. & W. CHESTER,

BRIGHTON :

11, GREAT MARLBOROUGH STREET, W.-1.

1, PALACE PLACE, CASTLE SQUARE.

Déposé selon les traités internationaux. Propriété pour tous les pays.
Tous droits de traduction, de reproduction, et d'arrangement réservés.

Seuls Dépositaires pour la France :

ROUART, LEROLLE ET CIE.,
29, RUE D'ASTORG, PARIS.

Printed in England.

J.W.C. 219.

Copyright, MCMXIX., by J. & W. Chester.

"SERBIAN" STRING QUARTETTE.

VIOLONCELLO.

1. *Andante maestoso.*

pp f p dim pp

mf

dim. pp

3. *Allegro giocoso.*

ppp fz f mf

fz p

fz p

ff

f

p

ff

tr

VIOLONCELLO

10

11

12

13

14

15

16

17

18

19

20

Andante maestoso

21

VIOLONCELLO

2.

Andante.

First staff of music for the second movement. It begins with a bass clef, a key signature of one flat (B-flat), and a 2/4 time signature. The music starts with a piano (*p*) dynamic. The notation includes eighth and sixteenth notes, some with accents, and a fermata over a note.

1

Second staff of music. It continues the melodic line with various note values and rests. A piano (*p*) dynamic is indicated.

2

Third staff of music. It features a change in tempo to *a tempo.* and includes the instruction *molto rit....* (molto ritardando). The dynamic is piano (*p*).

3

Fourth staff of music. The melodic line continues with some chromaticism. A piano (*p*) dynamic is marked.

4

Fifth staff of music. It shows a dynamic range from piano (*p*) to forte (*f*), with a crescendo hairpin. The time signature changes to 3/4 and then back to 2/4.

5

Sixth staff of music. It includes a piano (*p*) dynamic, a pianissimo (*pp*) dynamic, and a forte (*f*) dynamic.

6

Seventh staff of music. The dynamic is mezzo-forte (*mf*).

7

Eighth staff of music. The dynamic remains mezzo-forte (*mf*).

8

Ninth staff of music. It concludes the movement with a mezzo-forte (*mf*) dynamic, a piano (*p*) dynamic, and a *ritard.* (ritardando) leading to *FINE*.

3.

Presto.

First staff of music for the third movement. It begins with a bass clef, a key signature of one flat (B-flat), and a 3/4 time signature. The music starts with a forte (*f*) dynamic and quickly moves to fortissimo (*ff*).

1

Second staff of music. It continues the rhythmic pattern with a piano (*p*) dynamic.

VIOLONGELLO.

Meno mosso.

2

FINE

p

f

3

f

p

4

f

Da Capo al Fine
(con Rep)
attacca CODA

CODA.
Piu mosso.

ff

Stringendo.

fff

FINE

4.

Adagio.

mf

3

1

p

pp

ff

Allegro molto

2

p

3

pizz

arco

4

pizz *arco.*

f *dim*

5

p *pizz.* *pizz* *arco ff*

Meno mosso.

6

p *mf*

7

8

non rit. *f.*

ff

9

fz

(♩ = ♩)

10

Solo.

mf

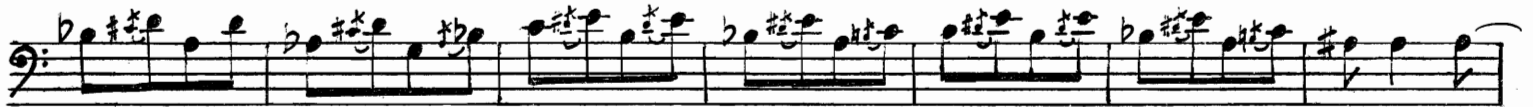
11

Tempo 1^o.

ritard.

12

VOLONCELLO.



cresc e stringendo



13

ff

fff



14

Più mosso.

p (subito)



1

2

15

repeat e accel ff ff



ff



16

accel.



Presto.

17

fff

Adagio.



accel.

3

18

fff



p

ppp

19

FINE