

1 <sup>re</sup> suite en Sol majeur - - - - -	2
2 <sup>de</sup> suite en Ré mineur - - - - -	8
3 <sup>me</sup> suite en Ut majeur - - - - -	16
4 <sup>me</sup> suite en Mi bémol majeur - - - - -	26
5 <sup>me</sup> suite en Ut mineur - - - - -	36
6 <sup>me</sup> suite en Ré majeur - - - - -	45

## Appendice

5 <sup>me</sup> suite en notation normale - - - - -	56
6 <sup>me</sup> suite arrangée en Sol majeur - - - - -	65

The Structure of the Prélude from the 1st Cello Suite of J.S. Bach: "Calendar"

1 2 3 4 5 6 7

8 14 7

15 7 14 7

22 7 14 7

29 7 14 7

36 7 14 7

42

6

*Suites a  
Violoncello Solo*

*senza*

*Basso.*

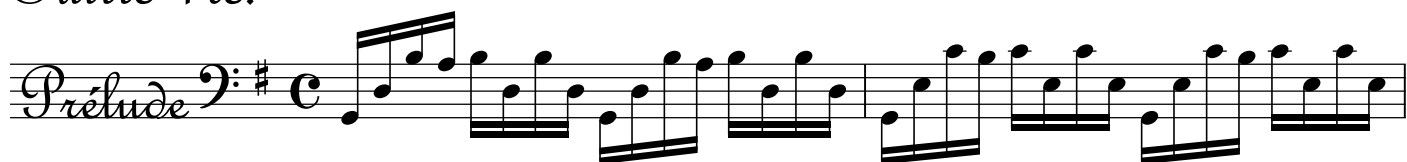
*composées*

*par*

*Sr. J. S. Bach.*

*Maitre de Chapelle.*

# Suite 1re.



21

23

25

27

29

31

33

I

II  
(a corde doppia)

35

37

39

41

Allemande

Musical notation for the first staff of the Allemande, starting with a bass clef, a key signature of one sharp (F#), and a common time signature (C). The melody begins with a half note G2, followed by a series of eighth notes and quarter notes.

3

Musical notation for the second staff of the Allemande, starting with a bass clef, a key signature of one sharp (F#), and a common time signature (C). The melody continues with eighth notes and quarter notes, ending with a trill on G3.

6

Musical notation for the third staff of the Allemande, starting with a bass clef, a key signature of one sharp (F#), and a common time signature (C). The melody continues with eighth notes and quarter notes, featuring a sharp sign on the eighth note of the third measure.

9

Musical notation for the fourth staff of the Allemande, starting with a bass clef, a key signature of one sharp (F#), and a common time signature (C). The melody continues with eighth notes and quarter notes, featuring a sharp sign on the eighth note of the second measure and a trill on G3 at the end.

12

Musical notation for the fifth staff of the Allemande, starting with a bass clef, a key signature of one sharp (F#), and a common time signature (C). The melody continues with eighth notes and quarter notes, featuring a trill on G3 at the beginning and end.

15

Musical notation for the sixth staff of the Allemande, starting with a bass clef, a key signature of one sharp (F#), and a common time signature (C). The melody continues with eighth notes and quarter notes, ending with a double bar line and repeat sign.

18

Musical notation for the seventh staff of the Allemande, starting with a bass clef, a key signature of one sharp (F#), and a common time signature (C). The melody continues with eighth notes and quarter notes, featuring a trill on G3 at the beginning and end.

21

Musical notation for the eighth staff of the Allemande, starting with a bass clef, a key signature of one sharp (F#), and a common time signature (C). The melody continues with eighth notes and quarter notes, featuring a trill on G3 at the beginning and a key signature change to one flat (Bb) for the last two measures.

24

Musical notation for the ninth staff of the Allemande, starting with a bass clef, a key signature of one sharp (F#), and a common time signature (C). The melody continues with eighth notes and quarter notes.

27

Musical notation for the tenth staff of the Allemande, starting with a bass clef, a key signature of one sharp (F#), and a common time signature (C). The melody continues with eighth notes and quarter notes.

30

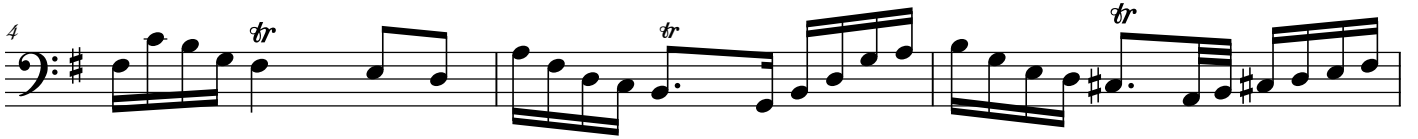
Musical notation for the eleventh staff of the Allemande, starting with a bass clef, a key signature of one sharp (F#), and a common time signature (C). The melody continues with eighth notes and quarter notes, ending with a double bar line and repeat sign.

*Courante* 

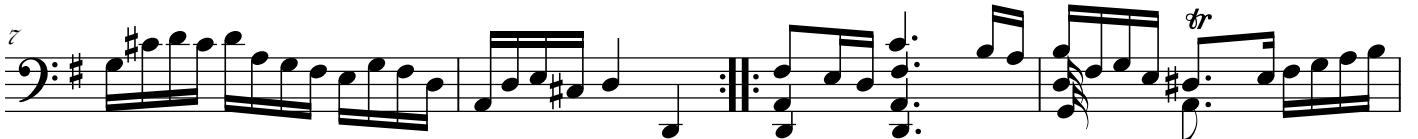
Sarabande *Basso*  $\#$   $\frac{3}{4}$



4 *tr*



7 *tr*



11 *tr*



14



Menuet *Basso*  $\#$   $\frac{3}{4}$   
1er



5



10



15



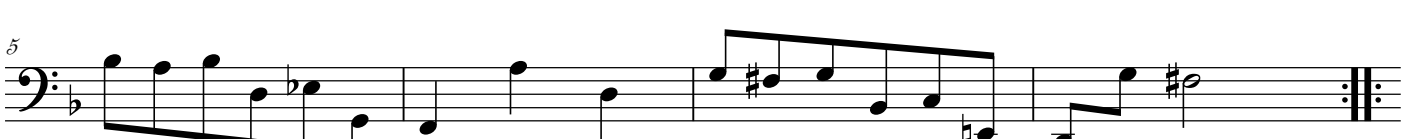
20



Menuet *Basso*  $\flat$   $\frac{3}{4}$   
2nd



5





9

13

17

21

Gigue

5

9

/13

17

22

27

31/