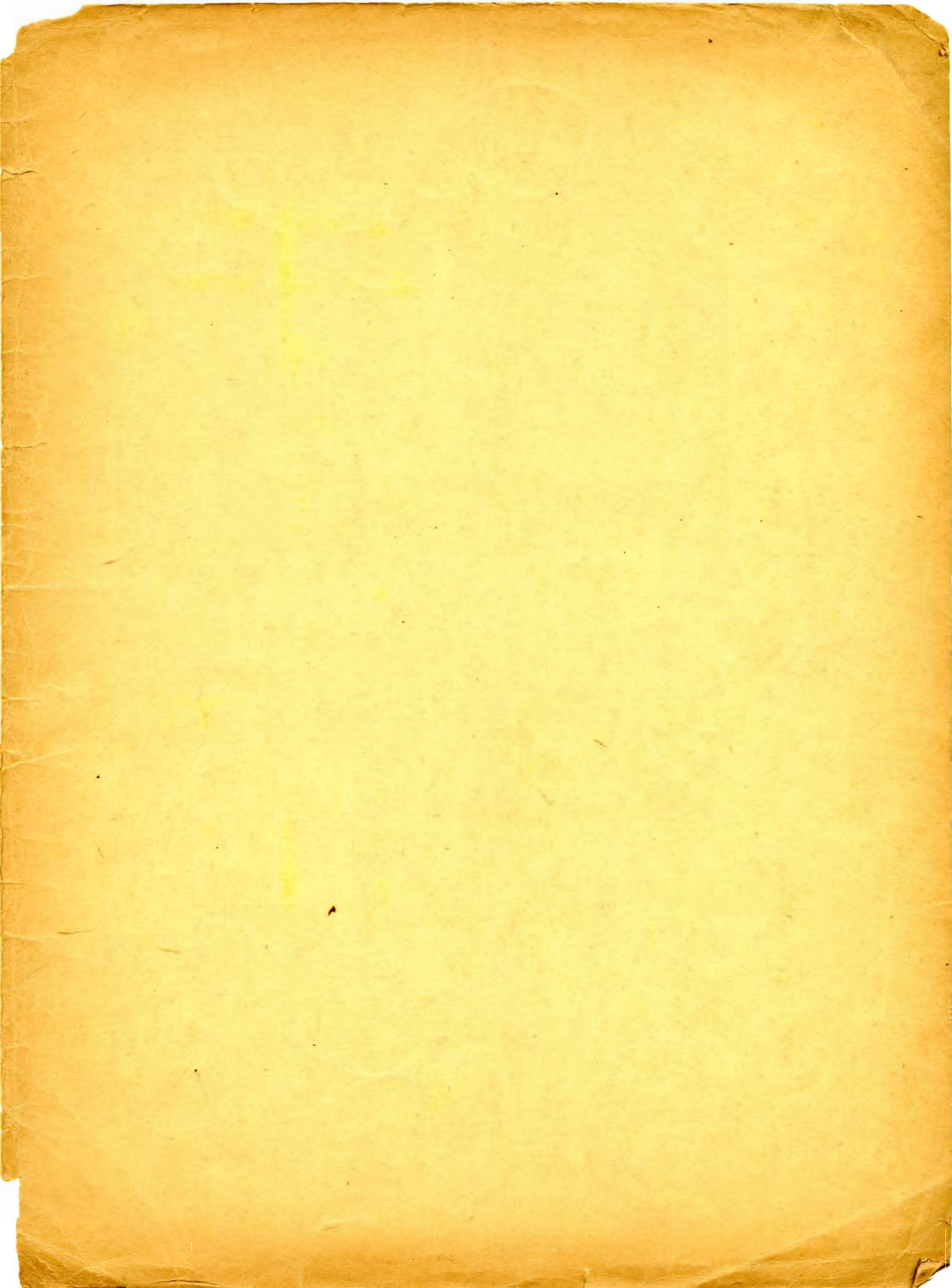


C. Debussy

Prelude a-

1. Après-midi à un Faune

Épreuve de la Partition d'orchestre
(corrections de l'Auteur)



l'après midi
très modéré

PRÉLUDE
à
l'après midi d'un faune

CLAUDE DEBUSSY

Très modéré
1^o SOLO

3 FLÛTES
p doux et expressif

2 HAUTOIS

2 CLARINETTES EN LA

4 CORS A PISTONS EN FA

2 HARPES
1^{re} accordez
LA-SIB, DOZ-REZ, MI-FAZ, SOL-LAZ
1^o glissando

Très modéré

VIOLONS

ALTOS

VIOLONCELLES

CONTREBASSES

E 4091 F

M. L...

une nouvelle édition

1

1^{re} FL. SOLO

HAUTB.

CL.

Bons

CORS

Handwritten annotations: *1*, *1*, *1*, *p*, *expressif*, *1^o*, *3^o*

14/14

10

10/14

1

Div. (sur la touche)

(sur la touche)

(sur la touche)

à 2

Handwritten annotations: *1*, *pp*, *pp*, *pp*, *pp*

19

1/14

FL. *SOLO*
dim et retenu

HAUTB.
p cre scen do f

COR ANGL.
p cre scen do f

CL.
p cre scen do f
dim et retenu

BOSS
p cre scen do f

1. 2.
 (2) *p cre scen do f dim.*

CORS
 3. 4.
 (3) *p cre scen do f dim.*

Div.
Unies.

position nat.
cre scen do f

position nat.
cre scen do f

position nat.
cre scen do f

position nat.
cre scen do f

Unies.

11/9
11/9

dim et retenu
dim et retenu

p
p

p
p

f / dim.

cre

Solo.

2

1^{re} FL. Solo. légèrement et expressif

First Flute staff with musical notation, including a trill and a triplet.

Second Flute staff with musical notation.

CORS *pp*

Horn staff with musical notation.

First Harp staff with musical notation, including a triplet and a fermata.

Second Harp staff with musical notation.

Third Harp staff with musical notation.

2

Fourth Harp staff with musical notation.

Fifth Harp staff with musical notation, including a fermata.

Sixth Harp staff with musical notation.

Seventh Harp staff with musical notation, including a fermata and the word *biv.*

Eighth Harp staff with musical notation, including the word *pizz.*

biv.

pp

pp

biv.

pizz.

FL.

Cl.

BONS

CORS

2^o et 4^o

1^o HARPE

2^o HARPE //

Div. arco

arco

arco

Div.

arcs.

13

6:

arcs.

FL. *f*

BONS *p*

Div. *Unis*

Unis *dim.*

arco *Div. dim.*

3

FL. *p*

CL *1^o*

CORS *sourdines*

1^{re} HARPE

3

ôtez vite les sourdines

ôtez vite les sourdines

ôtez vite les sourdines

pp

pizz. p

1^{re} FL.

CL.

BOIS

CORS

1^{re} HARPE

pizz. sf

pizz. arco sf p

pizz. arco sf p

pizz. arco sf pp

Div.

X *metron*
batte

Detailed description of the musical score: The score is for page 9 of a symphony. It features a woodwind section with 1st Flute (1^{re} FL.), Clarinet (CL.), and Woodwinds (BOIS). A brass section (CORS) is also present. The harp (1^{re} HARPE) and string sections are at the bottom. The key signature has two sharps (F# and C#), and the time signature is 3/4. The score is divided into three measures. The first measure shows the woodwinds and harp. The second measure features the woodwinds and strings. The third measure includes the woodwinds, brass, harp, and strings. Dynamics range from piano (p) to fortissimo (sf). Performance instructions include 'pizz.' (pizzicato) and 'arco' (arco) for the strings. A 'Div.' (divisi) instruction is present in the string section. A handwritten note 'X metron batte' is on the right side.

/b

4 En animant

1^{re} FL.

HAUTB.

CL.

BOIS

CORS

1^{re} HARPE

4 En animant

pizz.

Div. arco

arco

Unis

1/4

1/p

1/p

HAUTB. (à 2)

cre - - - scen - - - do *mf*

COR ANGL.

cre - - - scen - - - do *mf*

CL.

1^o *crs.* (2)

BOIS

crese. *mf*

1. 2.

CORS

3. 4. *p* *mf*

3^o

crese. *mf*

cre - - - scen - - - do *mf*

cre - - - scen - - - do *mf*

arco

cre - - - scen - - - do *mf*

Div. *p* *arco* *mf*

mf

mf

#

mes.

mf

mf

mf

mf

mf

5 Toujours en animant

Handwritten notes on the left margin: *1/2*, *2:30*, *1/2*, *1/2 cresc*

FL. *p* *cresc.*

HAUTB. *2^o* *p* *cresc.*

COR ANGL. *cresc.*

CL. *1^o* *p* *Changez en Sib* *1^o* *cresc.* *à 2*

BOIS *1^o* *p* *cresc.* *à 2*

CORS *p*

5 Toujours en animant

Vln *p*

Vla *p*

Vcl *p*

Div. *p*

Unis

14 si

FL.

HAUTB.

COR ANGL.

CL.

BOIS

CORS

mf *f* *dim.*

mf *f* *dim.*

mf *f* *dim.*

mf *f très en dehors* *f* *dim.*

mf *f très en dehors* *f* *dim.*

mf *f* *dim.*

mf *f* *1^o* *dim.*

mf *f* *f (en dehors)* *dim.*

mf *f* *3^o* *dim.*

mf *f* *dim.*

mf *f* *dim.*

f *f* *dim.*

f *f* *Div.* *dim.*

f *f* *dim.*

f (en dehors)

pin

pin

pin

pin

pin

pin

pin

pin

pin

pin

pin

pin

pin

pin

pin

pin

118

dans le
même jeu
que les
Bégues humilans

1^o
2^o/3^o
2^o

retenu - - - - - **6** **1^{er} mouv!**

FL. *p dim.* *ppp*

HAUTB. *p* *ppp*

COR ANGL.

CL. *Solo*
p doux et expressif

BONS *2^o*
p *pp*

CORS *dim.* *pp* *pp* *pp* *p*

1^{re} HARPE *p* *pp*

2^e HARPE *pp* *pp*

16 a u

retenu - - - - - *Div.* - - - - - **6** **1^{er} mouv!**

p dim. *pp* *pp* *pp* *p*

p dim. *pp* *pp* *pp* *p*

dim. *p* *pp* *pp* *pizz.* *p*

p dim. *pp* *pp* *pp* *p*

dim. *pp* *pp* *pp* *p*

Même mouv^t et très soutenu

FL. *p* expressif et très soutenu *mf*

HAUTB. *p* expressif et très soutenu *mf*

COR ANGL. *p* expressif et très soutenu *mf*

CL. *p* expressif et très soutenu *mf*

BOIS *p* *pp* *pp*

CORS (3. 4.) *pp* *pp*

Même mouv^t et très soutenu

p *pp* *pp* *pp* arco *pp* *pp*

7

FL. *p* cre - scen - do *f*

HAUTB. *p* cre - scen - do *f*

COR ANGL. *p* cre - scen - do *f*

CL. *p* cre - scen - do *f*

BONS *p* cre - scen - do *f*

1.2. *f*

CORS 3,4: *f*

7 *cresc.*

pp cre - scen - do *f* Unis

pp cre - scen - do *f* Unis

Div. *pp* cre - scen - do *f* Unis

pp cre - scen - do *f*

a Fa
#

FL. *pp subito*

HAUTB. *pp subito*

COR ANGL. *pp subito*

CL. *pp subito*

BONS *pp subito*

CORS *pp* _{2^o} _{4^o}

1^{re} HARPE *pp*

2^e HARPE *pp*

Unis *très expressif et très soutenu* *pp subito*

Div.

cre

cre

cre

cre

cre

cre

cre

cre

cre

cre

1/8
1/8

1/4 alla
7

1/4

1/4 et...

1/4 et...

scen do cre scen do molto

FL.
FLUTE

HAUTB.
HAUTBOYS

COR ANGL.
COR ANGLAIS

CL.
CLARINET

BOIS
OBOES

CORS
HORNS

1^{re} HARPE
1st HARP

2^e HARPE
2nd HARP

scen do scen do molto
mp cre scen do molto
scen do scen do molto
mp cre scen do molto
scen do scen do molto
mp cre scen do molto
scen do scen do molto
mp cre scen do molto

Musical score for page 19, featuring woodwinds, brass, harps, and strings. The score is written in a key signature of two flats and a 3/4 time signature. The instruments and their parts are:

- FL. (Flute)
- HAUTB. (Oboe)
- COR ANGL. (English Horn)
- CL. (Clarinet)
- BONS (Bassoon)
- CORS (Trumpets)
- 1^{re} HARPE (First Harp)
- 2^e HARPE (Second Harp)
- String quartet (Violins I, Violins II, Violas, Cellos)

The score includes dynamic markings such as *mf*, *f*, and *ff*. There are also performance instructions like *à 2* and *3^o*. The bottom of the page shows the beginning of the string quartet part.

130
15
16
15
15
19

Musical score for page 20, featuring woodwinds, harp, and strings. The score is written in a key with three flats and a 3/4 time signature. The instruments are:

- FL. (Flute)
- CL. (Clarinet)
- BASS (Bassoon)
- CORS (Cor Anglais)
- 1^{re} HARPE (Harp)
- 1^{er} V^{eu} SOLO (Violin I Solo)

Key annotations and markings include:

- Handwritten *mf* and *p* dynamics throughout.
- Handwritten *(12)* above the Clarinet part.
- Handwritten *très doux* above the Clarinet part in the third measure.
- Handwritten *très expressif et doux* above the Cor Anglais part in the third measure.
- Handwritten *p doux et expressif* above the Violin I Solo part in the third measure.
- Handwritten *sourdines* (mutes) on the strings in the third measure.
- Handwritten *Div.* above the strings in the second measure.
- Handwritten *3* and *4* above the strings in the first and second measures.

(12)

mf

16

mf *3* *3*

12

très expressif et doux

p

HAUTB.
CL.
CORNS
VON SOLO

pp très doux
ppp
pp
ppp
p
pp

1^{re} FL. **8** Mouvt du Début *doux et expressif*
HAUTB.
CL.
CORS
1^{re} HARPE
VON SOLO **8** Mouvt du Début *(1^{re} Violon)*

pp
pp
pp
pp
pp
pp

Div.
Div.
Div.
Div.

1^{re} Violon

Un peu plus animé

1^{re} FL. *pp*

HAUTB. *p* *sf*

CL. *pp*

BASS. *pp*

1. 2. *pp* *sourdines*

CORS 3. 4. *pp* *sourdines*

1^{re} HARPE *pp* préparez le ton de Mib

Un peu plus animé

pizz.

pizz.

pizz.

pizz.

pp

pp

pp
pp

pp

HAUTB. **9** 1^{er} mouv^t

doux et expressif

Musical staff for Horn (HAUTB.) showing a melodic line with a dynamic marking of *p* and a slur over the first two measures.

CORS

Musical staff for Horn (CORS) showing a melodic line with a dynamic marking of *p* and a slur over the first two measures.

1^{re} HARPE

Musical staff for First Harp (1^{re} HARPE) showing a complex arpeggiated texture with multiple slurs and a dynamic marking of *pp*.

2^e HARPE accordez sur SI \sharp -DO \sharp , RE \sharp -MI \flat , FA \sharp -SOL \flat , LA \sharp -SI \flat

Musical staff for Second Harp (2^e HARPE) showing a sustained accompaniment with a dynamic marking of *pp*.

9

1^{er} mouv^t

Musical staff for Horn (HAUTB.) showing a sustained accompaniment with a dynamic marking of *pp*.

pos. nat.

Musical staff for Horn (CORS) showing a sustained accompaniment with a dynamic marking of *pp*.

pos. nat.
Div.

Musical staff for Horn (HAUTB.) showing a sustained accompaniment with a dynamic marking of *pp*.

pos. nat.
Unis.

Musical staff for Horn (CORS) showing a sustained accompaniment with a dynamic marking of *pp*.

Div.

Musical staff for Horn (HAUTB.) showing a sustained accompaniment with a dynamic marking of *pp*.

dans le mouv^t plus animé

1. FL. 2. 3.

HAUTB.

COR ANGL.

CL. Changez en La²

BOIS

CORS

1^{re} HARPE

2^e HARPE

glissando

dans le mouv^t plus animé

pizz.

pizz.

pizz.

pizz.

pp

pp

1/4 1/4
pp
pp

1.
FL. 2. 3.

HAUTB.

COR ANGL.

CL.

BONS

CORS

2^e HARPE

arco

pizz.

arco

Unis.

Div.

10 cuivre

glissando

Retenu

10 Dans le 1^{er} mouv^t avec plus de langueur

FL. *p* *expressif et doux*

COR ANGL. *mf*

CL. *pp* *1^o bouché naturel*

CORS *pp* *2^o et 4^o*

CYMB. ANTIQUES *pp*

DEUX 1^{rs} V^{ns} *10* *sans sourdines*

1^{rs} V^{ns} Divisés *arco* *sur la touche* *pp* *très doux et expressif*

2^{ds} V^{ns} Divisés *arco* *sur la touche* *pp*

ALTOS Divisés *sur la touche* *pp*

Div. *sur la touche* *pp*

à Sol

à Sol

FL. *mf*

HAUTB *mf*

CL. *mf*

BONS *pp*

CORS 1. 2. 3. 4. *p*

CYMB. ANT. *pp*

1^{re} Vlle SOLO *p*

FL.

HAUTB.

CL.

BOIS

CORS

CYMB. ANT.

1^{re} HARPE

1^{re} v^{lle} SOLO

sordine

2^o

pos. nat.

pos. nat.

pos. nat.

pos. nat.

pos. nat.

pos. nat.

pos. nat.

3

6

19

11

11

Très retenu

1^{re} FL.
HAUTB.
COR ANGL.
CL.
BOIS
CORS

11

Très retenu

12

Très lent et très retenu jusqu'à la fin

FL.

HAUTB.

1. 2. (sourdines)
CORNS 3. 4. (sourdines)

CYMB. ANT.

1^{re} et 2^e HARPES

1^{ère}

12

Très lent et très retenu jusqu'à la fin

Unis

pizz. div

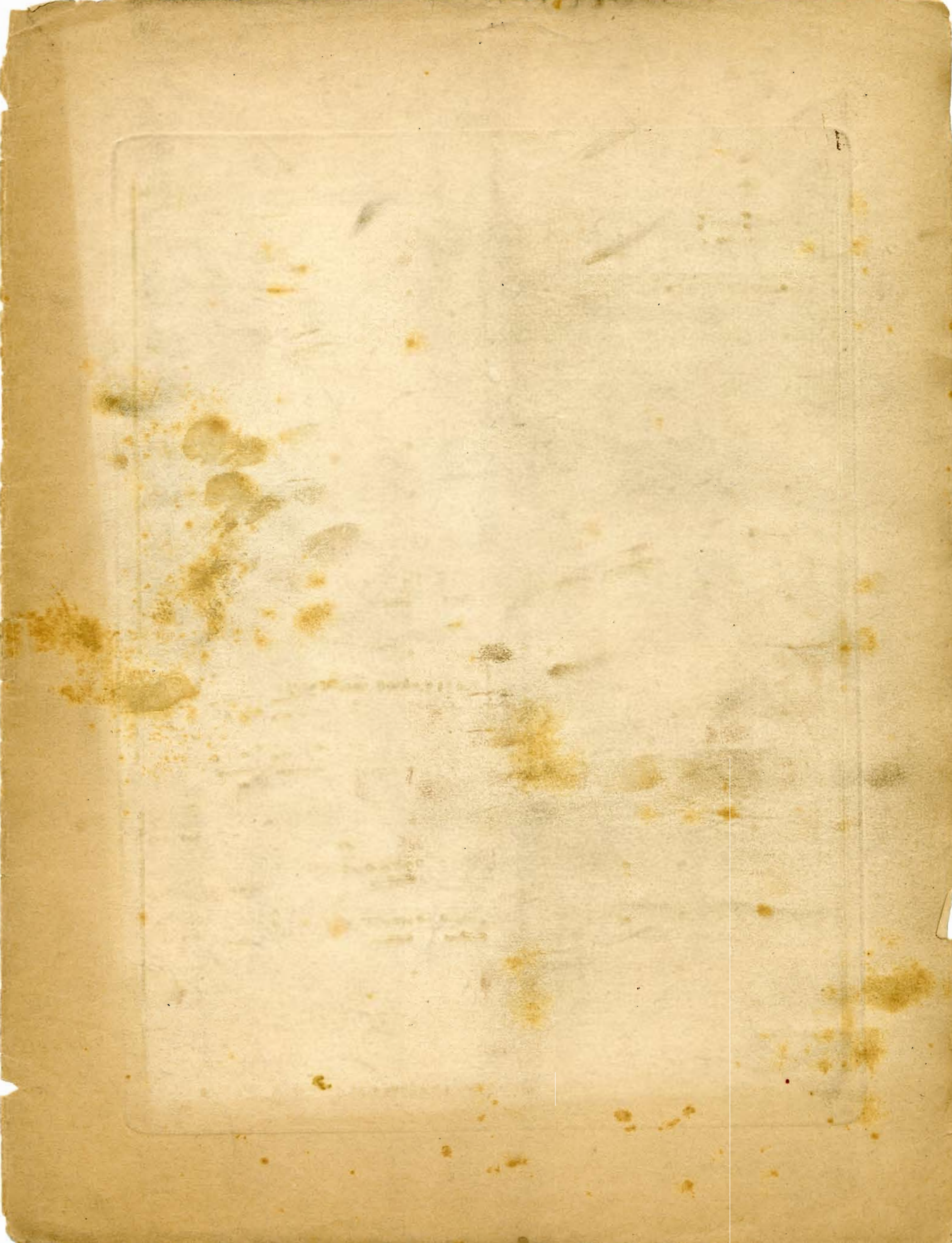
pizz.

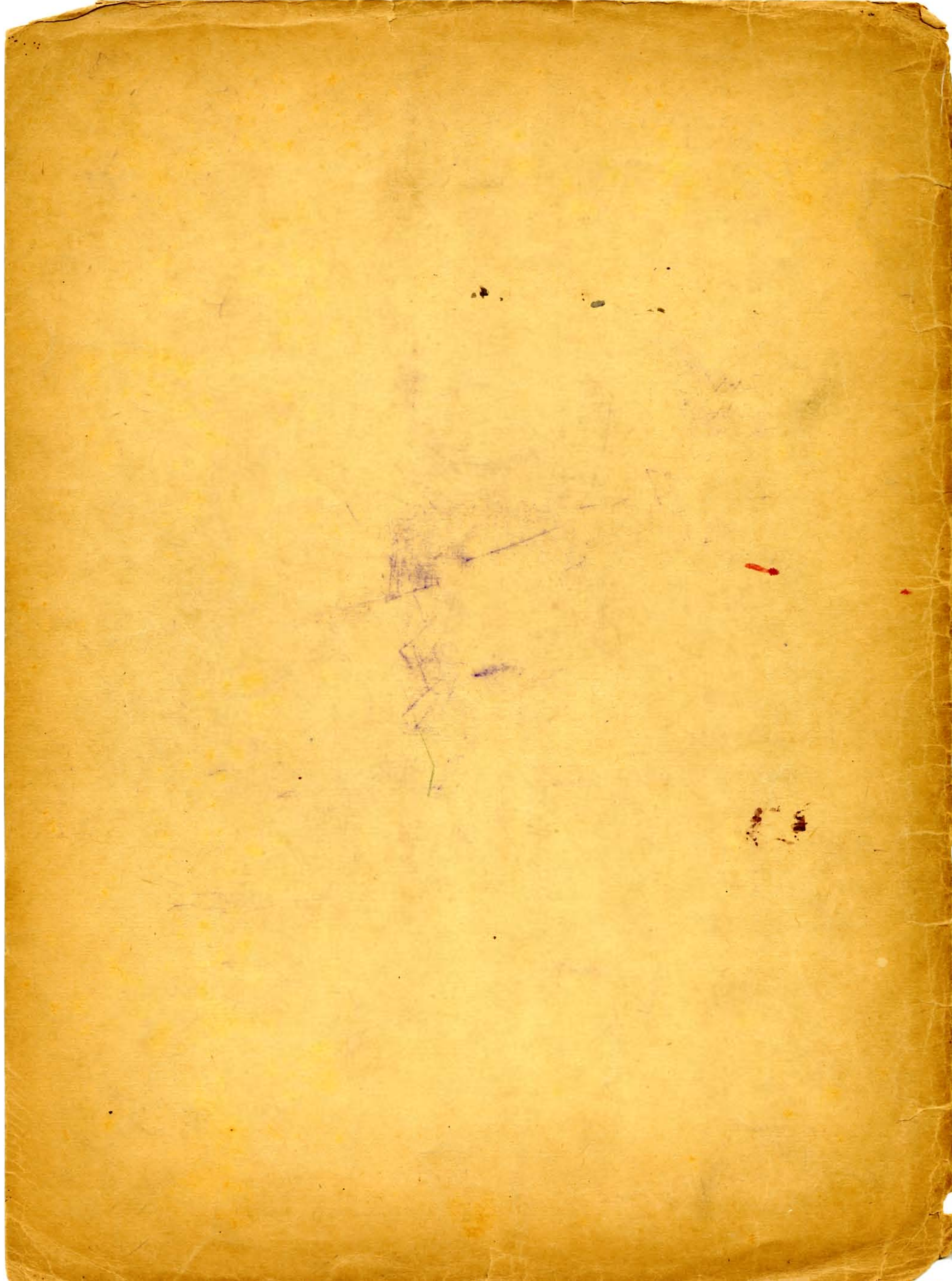
1/4 a Si

1/p/pp

1 div.

1+ / +





Rambaisie

piano et orchestre

{ Piano
et orchestre réduit