

PAVANE POUR UN INFANTE DÉFUNTE

Simplified Arrangement
for String Orchestra by
JEFF MANOOKIAN

MAURICE RAVEL

Lent

Violin I
p

Violin II
p pizz.

Viola
p pizz.

Cello
p pizz.

Contrabass
p pizz.

8 *p* rit. *pp* arco pizz. *pp* pizz. *pp* pizz. *pp* arco *pp* arco *pp* arco *pp*

15 **A** *a tempo* *pp* arco *mp* arco *mp* arco *mp* arco *mp*

PAVANE POUR UN INFANTE DÉFUNTE

22 *rit.* *pizz.* **B** *a tempo*

Vln. I
Vln. II
Vla.
Vc.
Cb.

mp *pp*

29 *arco*

Vln. I
Vln. II
Vla.
Vc.
Cb.

mf *arco*
mf *arco*
mf
mf
mf

36 *rit.* **C** *a tempo*

Vln. I
Vln. II
Vla.
Vc.
Cb.

pp
pp
pp pizz.
pp pizz.
pp

43

Vln. I

Vln. II

Vla.

Vc.

Cb.

mf

mf

mf
arco

mf
arco

mf
arco

mf

50

Vln. I

Vln. II

Vla.

Vc.

Cb.

rit.

f

f

f

f

f

f

p

pizz.

p

pizz.

p

pizz.

p

pizz.

p

p

p

p

p

p

p

a tempo

(D)

57

Vln. I

Vln. II

Vla.

Vc.

Cb.

PAVANE POUR UN INFANTE DÉFUNTE

E a tempo

64 rit. *pp*

Vln. I

Vln. II arco *p* arco *pp* pizz.

Vla. *p* arco *pp* pizz.

Vc. arco *pp*

Cb. *pp*

71 rit. *mf* *pp*

Vln. I *mf* *pp*

Vln. II arco *mf*

Vla. arco *mf*

Vc. *mf* arco

Cb. *mf*

78 **F** a tempo *pp* *pp* *pp* pizz. *pp*

Vln. I

Vln. II *pp*

Vla. *pp*

Vc. *pp* pizz.

Cb. *pp*

84

Vln. I

Vln. II

Vla.

Vc.

Cb.

Detailed description: This system contains measures 84 through 89. The first violin part (Vln. I) features a melodic line with slurs and accents. The second violin (Vln. II) and viola (Vla.) parts provide harmonic support with similar melodic patterns. The cello (Vc.) part has a steady bass line with slurs. The double bass (Cb.) part is mostly silent, with a few notes in the later measures. The key signature is one sharp (F#) and the time signature is 3/4.

90

Vln. I

Vln. II

Vla.

Vc.

Cb.

arco

Detailed description: This system contains measures 90 through 96. The first violin part (Vln. I) has a more active melodic line with slurs and accents. The second violin (Vln. II) and viola (Vla.) parts continue their harmonic support. The cello (Vc.) part has a steady bass line with slurs. The double bass (Cb.) part has a few notes in the later measures. The key signature is one sharp (F#) and the time signature is 3/4.

97

Ⓞ G

Vln. I

Vln. II

Vla.

Vc.

Cb.

pizz.

Detailed description: This system contains measures 97 through 102. The first violin part (Vln. I) has a melodic line with slurs and accents. The second violin (Vln. II) and viola (Vla.) parts provide harmonic support. The cello (Vc.) part has a steady bass line with slurs. The double bass (Cb.) part has a few notes in the later measures. The key signature is one sharp (F#) and the time signature is 3/4.

103

Vln. I
Vln. II
Vla.
Vc.
Cb.

Detailed description: This system of musical notation covers measures 103 to 108. It features five staves: Violin I, Violin II, Viola, Violoncello, and Contrabasso. The key signature is one sharp (F#) and the time signature is 3/4. The Violin I part begins with a half note G4, followed by a series of eighth and sixteenth notes with slurs. The Violin II part has a similar rhythmic pattern. The Viola part consists of eighth notes with slurs. The Violoncello part has a steady eighth-note accompaniment. The Contrabasso part has a sparse accompaniment with some rests.

109

Vln. I
Vln. II
Vla.
Vc.
Cb.

arco

Detailed description: This system covers measures 109 to 115. The Violin I part has a melodic line with slurs and accents. The Violin II part has a similar melodic line. The Viola part has a rhythmic accompaniment with slurs. The Violoncello part has a steady eighth-note accompaniment. The Contrabasso part has a sparse accompaniment. A double bar line is present at the end of measure 115, with the word 'arco' written below the staff.

116

H *a tempo*

Vln. I
Vln. II
Vla.
Vc.
Cb.

pp
pp
pp
pizz.
pp
pp

Detailed description: This system covers measures 116 to 121. It begins with a rehearsal mark 'H' in a circle and the tempo marking 'a tempo'. The Violin I part has a melodic line with slurs and a dynamic marking of 'pp'. The Violin II part has a rhythmic accompaniment with slurs and a dynamic marking of 'pp'. The Viola part has a steady eighth-note accompaniment with a dynamic marking of 'pp' and 'pizz.'. The Violoncello part has a sparse accompaniment with a dynamic marking of 'pp'. The Contrabasso part has a steady eighth-note accompaniment with a dynamic marking of 'pp'.

121

Vln. I
Vln. II
Vla.
Vc.
Cb.

126

rit. **I** *a tempo*

Vln. I
Vln. II
Vla.
Vc.
Cb.

pp
pp
pp
pp
pp

arco *pizz.*

133

rit.

Vln. I
Vln. II
Vla.
Vc.
Cb.

mf
mf
mf
mf
mf

arco *arco*

PAVANE POUR UN INFANTE DÉFUNTE

Simplified Arrangement
for String Orchestra by
JEFF MANOOKIAN

MAURICE RAVEL

VIOLIN 1

Lent

p

7 *rit.* *pp*

13 **A** *a tempo* *pp*

20 *rit.* *mp* *pizz.* **B** *a tempo* *pp*

26

32 *arco* *rit.* *mf*

38 **C** *a tempo* *pp* *rit.*

45 *mf* *f*

52 **D** *a tempo* *p*

59

PAVANE POUR UN INFANTE DÉFUNTE - Violin 1

2
65 *rit.* **(E)** *a tempo* *pp*

72 *rit.* **(F)** *a tempo* *mf* *pp*

79

85

91

97 **(G)**

103

109

115 **(H)** *a tempo* *pp*

122

128 *rit.* **(I)** *a tempo* *pp*

135 *rit.* *mf*

PAVANE POUR UN INFANTE DÉFUNTE

Simplified Arrangement
for String Orchestra by
JEFF MANOOKIAN

MAURICE RAVEL

VIOLIN 2

Lent
pizz.
p

7 *rit.* arco *pp*

13 pizz. **(A)** *a tempo* *pp*

20 arco *mp* *rit.* pizz. **(B)** *a tempo* *pp*

26

32 arco *mf* *rit.*

38 **(C)** *a tempo* *pp* *rit.*

46 *mf* *f*

52 **(D)** pizz. *a tempo* *p*

58

PAVANE POUR UN INFANTE DÉFUNTE - Violin 2

64 *rit.* arco *p* pizz. **E** *a tempo* *pp*

71 arco *mf* *rit.*

78 **F** *a tempo* *pp*

85

91 **G**

99

106

112 **H** *a tempo* *pp*

118

122

126 *rit.* **I** *a tempo* *pp*

132 *mf* *rit.*

PAVANE POUR UN INFANTE DÉFUNTE

Simplified Arrangement
for String Orchestra by
JEFF MANOOKIAN

MAURICE RAVEL

VIOLA

Lent
pizz.



p

6



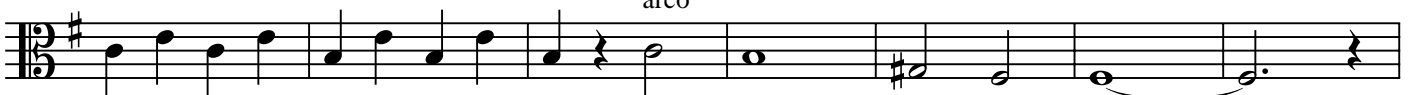
12



pp

pp

18



mp

25



p

32



mf

pp

39



45



mf

51



f

p

57



2 PAVANE POUR UN INFANTE DÉFUNTE - Viola

63 rit. arco E pizz. a tempo

p *pp*

69 arco

75 rit. F a tempo

mf *pp*

82

88

94 G

101

106

110

116 H a tempo

pp

124 rit. I a tempo

pp

132 rit.

mf

PAVANE POUR UN INFANTE DÉFUNTE

Simplified Arrangement
for String Orchestra by
JEFF MANOOKIAN

MAURICE RAVEL

CELLO

Lent

pizz.
p

6

12 *rit.*
arco
pp **A** *a tempo*
pp

20 *rit.* **B** *a tempo*
mp *pp*

28 *mf*

36 *rit.* **C** *a tempo*
pizz.
pp

42

48 *arco* *mf* *rit.* *f*

54 **D** *a tempo*
pizz.
p

PAVANE POUR UN INFANTE DÉFUNTE - Cello

2
60

rit.
arco

66

a tempo
pp

74

rit. (F) *a tempo*
mf *pp*

81

88

95

102

109

116

(H) *a tempo*
pizz.
pp

122

arco

128

rit. (I) *a tempo*
pizz.
pp

134

arco *rit.*
mf

PAVANE POUR UN INFANTE DÉFUNTE

Simplified Arrangement
for String Orchestra by
JEFF MANOOKIAN

MAURICE RAVEL

CONTRABASS

Lent pizz. *p*

7 *rit.* *pp*

14 (A) *a tempo* **2**

22 *rit.* arco *a tempo* (B) *mp* *pp*

30 *mf* *rit.* (C)

38 *a tempo* pizz. *pp*

45 arco *mf* *f* *rit.*

52 (D) *a tempo* pizz. *p*

PAVANE POUR UN INFANTE DÉFUNTE - Contrabass

2

58

64

rit.

E *a tempo*

pp

71

rit.
arco

F *a tempo*

mf

82

pizz.

pp

90

arco

97

G

pizz.

108

arco

116

H *a tempo*

pp

125

rit.

a tempo

pp

134

arco

rit.

mf